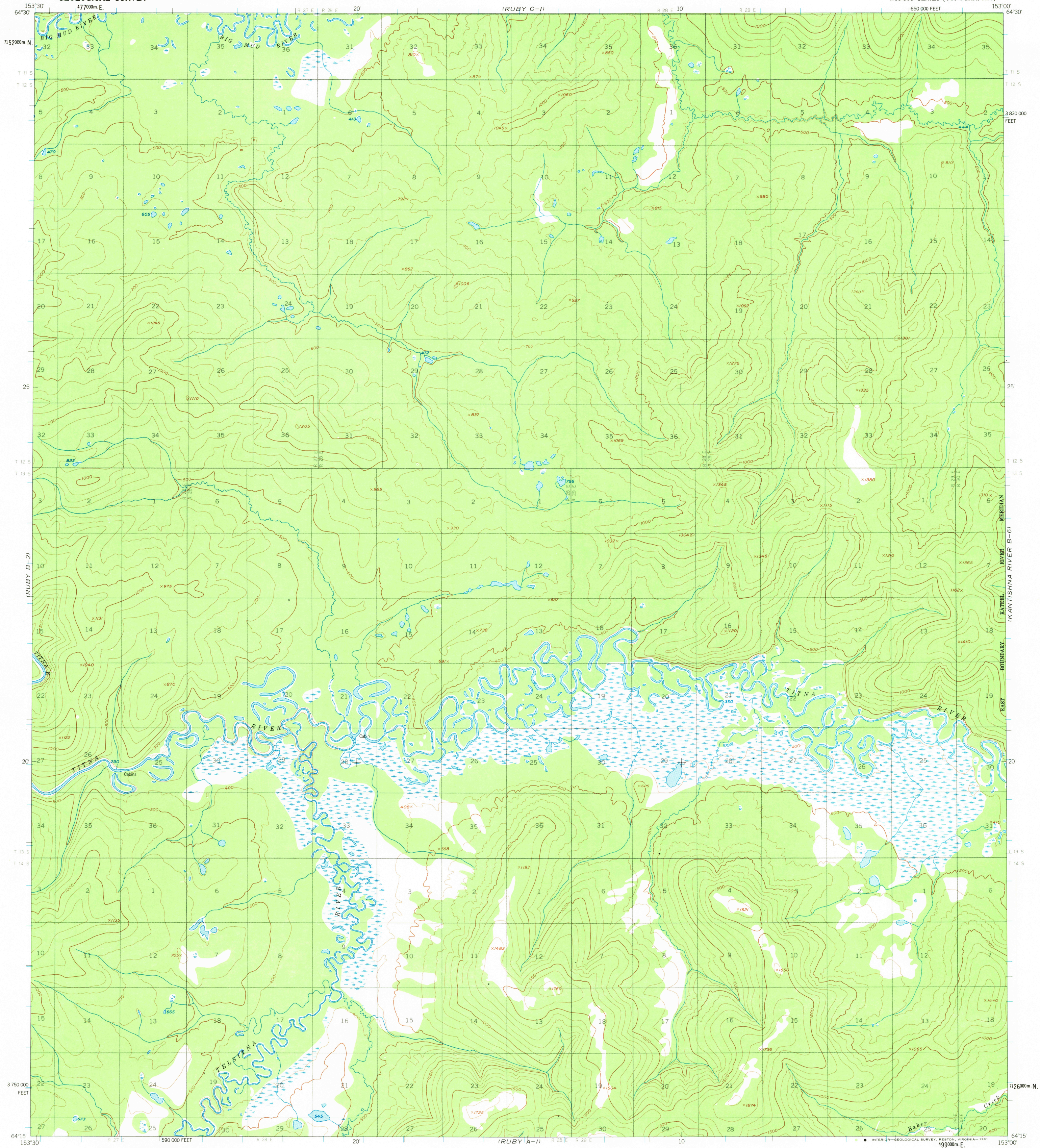


(RUBY C-2)

UNITED STATES  
DEPARTMENT OF THE INTERIOR  
GEOLOGICAL SURVEY

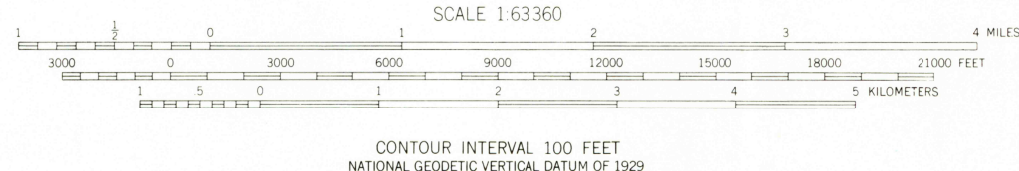
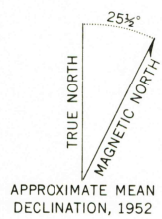
RUBY (B-1) QUADRANGLE  
ALASKA  
1:63 360 SERIES (TOPOGRAPHIC)

(KANTISHNA RIVER C-6)



(RUBY A-2)

Mapped, edited, and published by the Geological Survey  
Control by USGS, NOS/NOAA, and USCE  
Topography by photogrammetric methods from aerial photographs  
taken 1952. Map not field checked.  
Universal Transverse Mercator projection, 1927 North American datum  
10,000-foot grid based on Alaska coordinate system, zone 5  
1000-meter Universal Transverse Mercator grid ticks,  
zone 5, shown in blue  
Land lines represent unsurveyed and unmarked locations  
predetermined by the Bureau of Land Management  
Folio K-10, Kantele River Meridian  
Swamps, as portrayed, indicate only the wetter areas,  
usually of low relief, as interpreted from aerial photographs  
To place on the predicted North American Datum 1983 move  
the projection lines 63 meters north and 122 meters east  
Lake elevations are unchecked



CONTOUR INTERVAL 100 FEET  
NATIONAL GEODETIC VERTICAL DATUM OF 1929

FOR SALE BY U. S. GEOLOGICAL SURVEY  
FAIRBANKS, ALASKA 99701, DENVER, COLORADO 80225, OR RESTON, VIRGINIA 22092  
A FOLDER DESCRIBING TOPOGRAPHIC MAPS AND SYMBOLS IS AVAILABLE ON REQUEST



USGS  
HISTORICAL FILE  
NATIONAL MAPPING DIVISION

RUBY (B-1), ALASKA  
N6415—W15300/15X30  
1952  
MINOR REVISIONS 1973

(KANTISHNA RIVER A-6)

1600  
JUN 29 1981