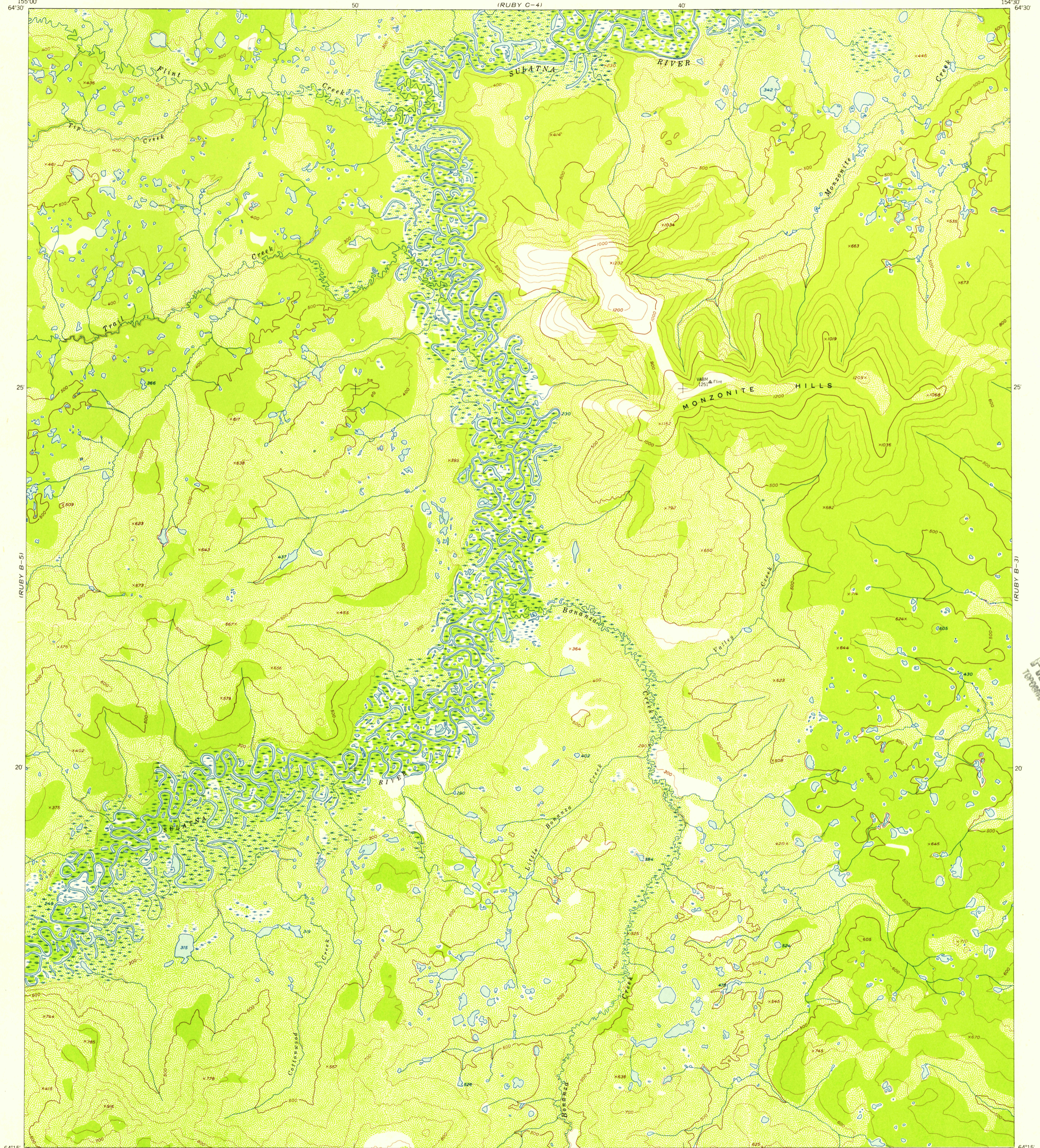


(RUBY C-5)  
155°00'  
64°30'

UNITED STATES  
DEPARTMENT OF THE INTERIOR  
GEOLOGICAL SURVEY

RUBY (B-4) QUADRANGLE  
ALASKA—FOURTH JUDICIAL DIVISION  
1:63 360 SERIES (TOPOGRAPHIC)

(RUBY C-3)  
154°30'  
64°30'



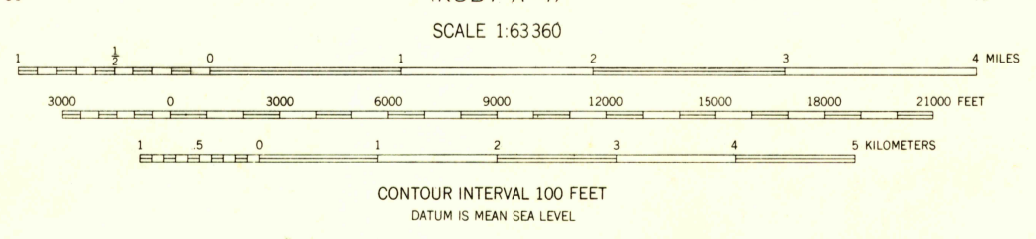
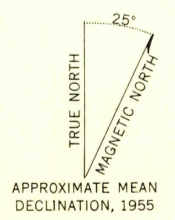
(RUBY B-5)

(RUBY B-3)

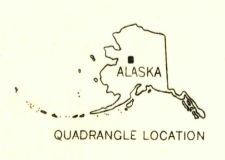
(RUBY A-5)

(RUBY A-3)

Mapped, edited, and published by the Geological Survey  
Control by USCGS and USCE  
Topography from aerial photographs by multiplex methods 1955  
Aerial photographs taken 1952. Map not field checked  
Universal Transverse Mercator projection, zone 5  
1927 North American datum  
Unchecked elevations are shown in brown and blue



USGS  
Historical File  
Topographic Division



U.S.G.S.  
FILE COPY  
TOPOGRAPHIC DIVISION

ROAD CLASSIFICATION  
No roads or trails in this area

RUBY (B-4), ALASKA  
N6415-W15430/15X30  
1952

FOR SALE BY U.S. GEOLOGICAL SURVEY  
FAIRBANKS, ALASKA DENVER 2, COLORADO WASHINGTON 25, D.C.  
A FOLDER DESCRIBING TOPOGRAPHIC MAPS AND SYMBOLS IS AVAILABLE ON REQUEST

U.S.G.S.  
FILE COPY  
TOPOGRAPHIC DIVISION

1960