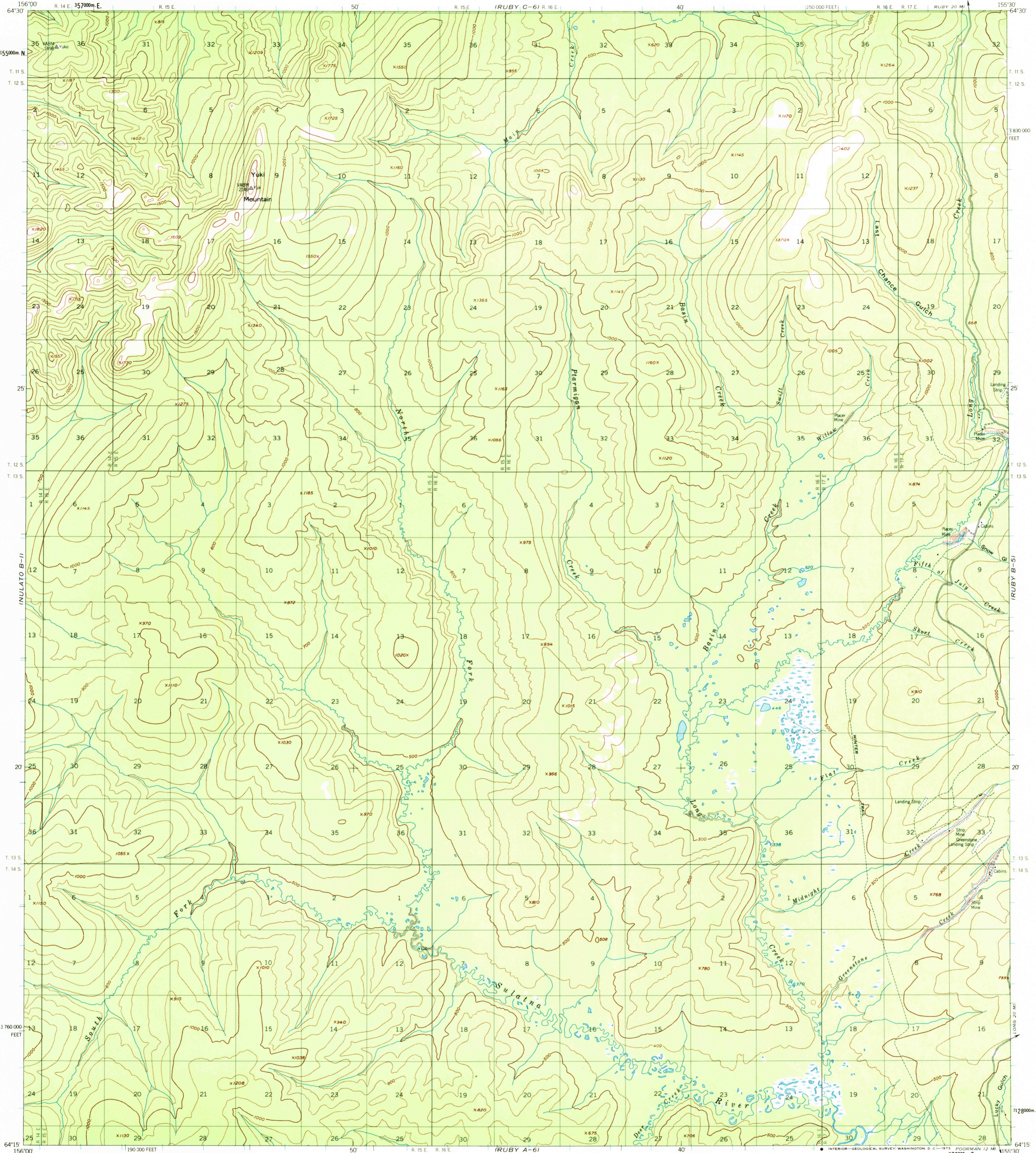


INULATO C-11

UNITED STATES
DEPARTMENT OF THE INTERIOR
GEOLOGICAL SURVEY

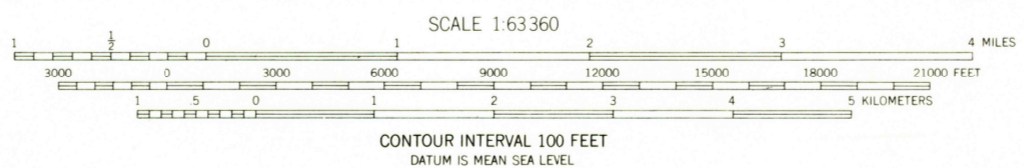
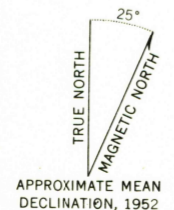
RUBY (B-6) QUADRANGLE
ALASKA
1:63 360 SERIES (TOPOGRAPHIC)

RUBY C-51



INULATO A-11

Mapped, edited, and published by the Geological Survey
Control by USCGS and USCE
Topography by photogrammetric methods from aerial photographs
taken 1952. Map not field checked
Universal Transverse Mercator projection, 1927 North American datum
10,000-foot grid based on Alaska coordinate system, zone 5
1000-meter Universal Transverse Mercator grid ticks,
zone 5, shown in blue
Land lines represent unsurveyed and unmarked locations
predetermined by the Bureau of Land Management
Folios K-10 and K-11, Katoel River Meridian
Swamps, as portrayed, indicate only the wetter areas,
usually of low relief, as interpreted from aerial photographs



ROAD CLASSIFICATION
Light-duty ————— Unimproved dirt —————



FOR SALE BY U. S. GEOLOGICAL SURVEY
FAIRBANKS, ALASKA 99701, DENVER, COLORADO 80225, OR WASHINGTON, D. C. 20242
A FOLDER DESCRIBING TOPOGRAPHIC MAPS AND SYMBOLS IS AVAILABLE ON REQUEST

RUBY (B-6), ALASKA
N6415—W15530/15X30
1952
MINOR REVISIONS 1972

USGS
HISTORICAL FILE
TOPOGRAPHIC DIVISION

MAR 27 1973

1715