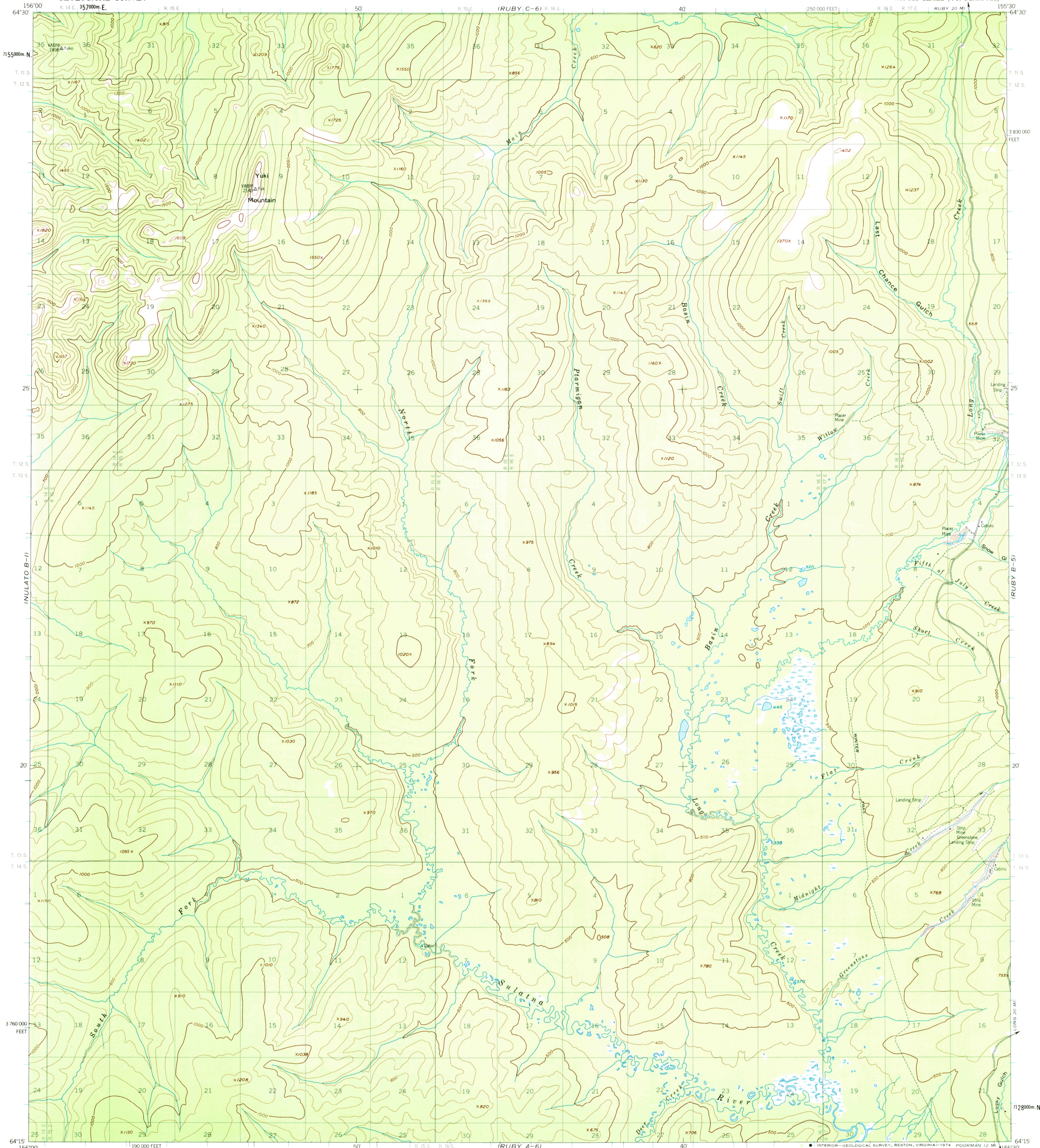


UNITED STATES  
DEPARTMENT OF THE INTERIOR  
GEOLOGICAL SURVEY

RUBY (B-6) QUADRANGLE  
ALASKA  
1:63 360 SERIES (TOPOGRAPHIC)



INULATO C-11  
INULATO B-11  
INULATO A-11

(RUBY C-6)  
(RUBY C-5)  
(RUBY B-5)  
(RUBY A-5)

Mapped, edited, and published by the Geological Survey  
Control by USC&GS and USCE  
Topography by photogrammetric methods from aerial photographs  
taken 1952. Map not field checked  
Universal Transverse Mercator projection. 1927 North American datum  
10,000-foot grid based on Alaska coordinate system, zone 5  
1000-meter Universal Transverse Mercator grid ticks,  
zone 5, shown in blue  
Land lines represent unsurveyed and unmarked locations  
predetermined by the Bureau of Land Management  
Folios K-10 and K-11, Katoel River Meridian  
Swamps, as portrayed, indicate only the wetter areas,  
usually of low relief, as interpreted from aerial photographs

SCALE 1:63 360  
CONTOUR INTERVAL 100 FEET  
DATUM IS MEAN SEA LEVEL

ROAD CLASSIFICATION  
Light duty ———— Unimproved dirt ————

FOR SALE BY U. S. GEOLOGICAL SURVEY  
FAIRBANKS, ALASKA 99701, DENVER, COLORADO 80225, OR RESTON, VIRGINIA 22092  
A FOLDER DESCRIBING TOPOGRAPHIC MAPS AND SYMBOLS IS AVAILABLE ON REQUEST

RUBY (B-6), ALASKA  
N6415-W15530/15X30  
1952  
MINOR REVISIONS 1972  
MAY 16 1974

USGS  
Historical File  
Topographic Division

4095