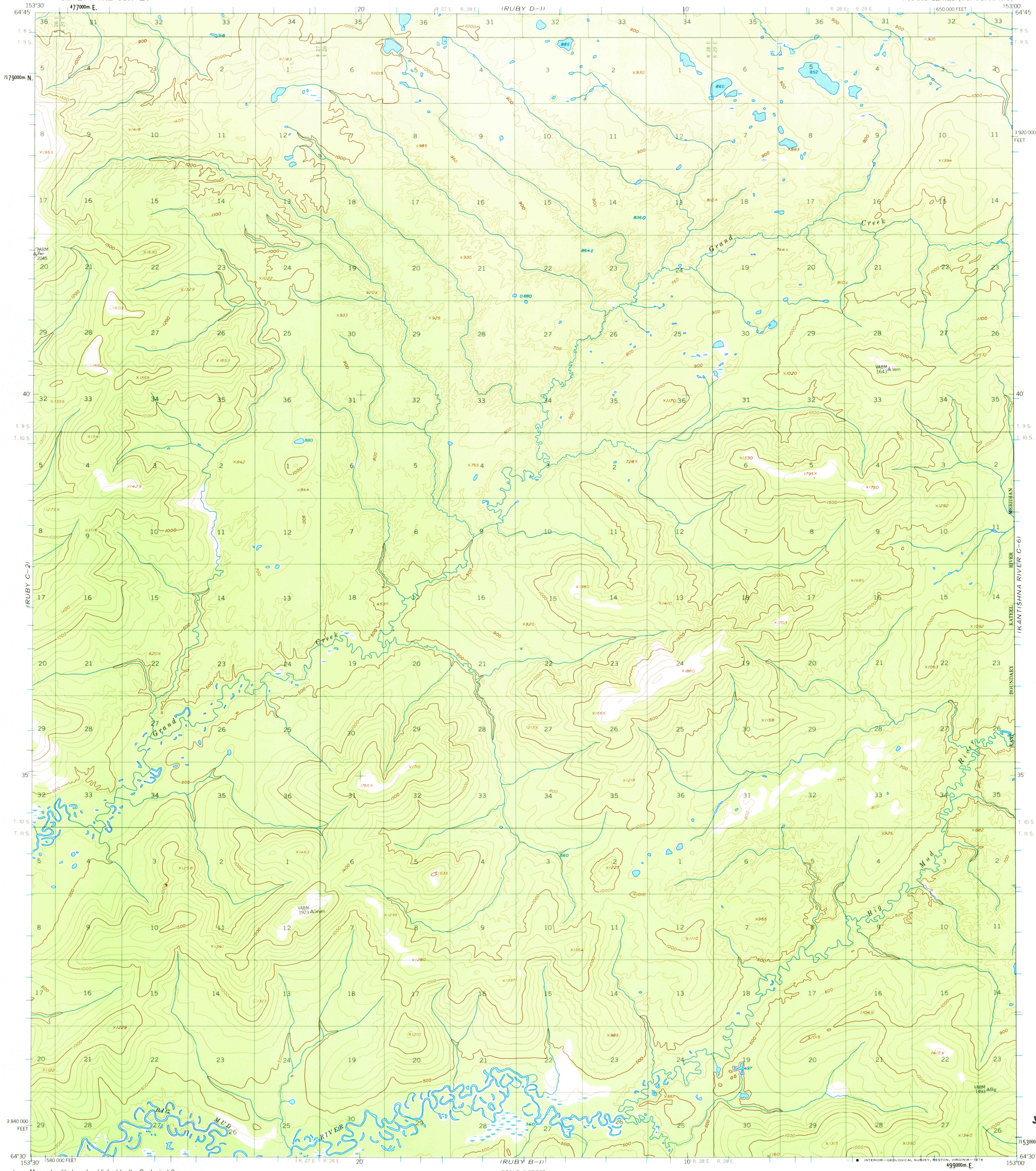


(RUBY D-2)

UNITED STATES  
DEPARTMENT OF THE INTERIOR  
GEOLOGICAL SURVEY

RUBY (C-1) QUADRANGLE  
ALASKA  
1:63 360 SERIES (TOPOGRAPHIC)

(KANTISHNA RIVER D-6)



(RUBY B-2)

Mapped, edited, and published by the Geological Survey  
Control by USGS and USC&GS  
Topography by photogrammetric methods from aerial photographs  
taken 1952. Map not field checked.  
Universal Transverse Mercator projection, 1927 North American datum  
10,000-foot grid based on Alaska coordinate system, zone 5  
1000-meter Universal Transverse Mercator grid ticks,  
zone 5, shown in blue  
Land lines represent unsurveyed and unmarked locations  
predetermined by the Bureau of Land Management  
Folio K-10, Kite River Meridian  
Swamps, as portrayed, indicate only the wetter areas,  
usually of low relief, as interpreted from aerial photographs

TRUE NORTH  
MAGNETIC NORTH  
APPROXIMATE MEAN  
DECLINATION, 1952

SCALE 1:63 360  
1 2 3 4 MILES  
3000 0 3000 6000 9000 12000 15000 18000 21000 FEET  
1 2 3 4 5 KILOMETERS  
CONTOUR INTERVAL 100 FEET  
DASHED LINES REPRESENT 50-FOOT CONTOURS  
DATUM IS MEAN SEA LEVEL



USGS  
Historical File RUBY (C-1), ALASKA  
Topographic Division  
N6430—W15300/15X30

1952  
MINOR REVISIONS 1973

FOR SALE BY U. S. GEOLOGICAL SURVEY  
FAIRBANKS, ALASKA 99701, DENVER, COLORADO 80225, OR RESTON, VIRGINIA 22092  
A FOLDER DESCRIBING TOPOGRAPHIC MAPS AND SYMBOLS IS AVAILABLE ON REQUEST

ROAD CLASSIFICATION  
No roads or trails in this area

JUN 24 1974

(KANTISHNA RIVER B-6)  
1640