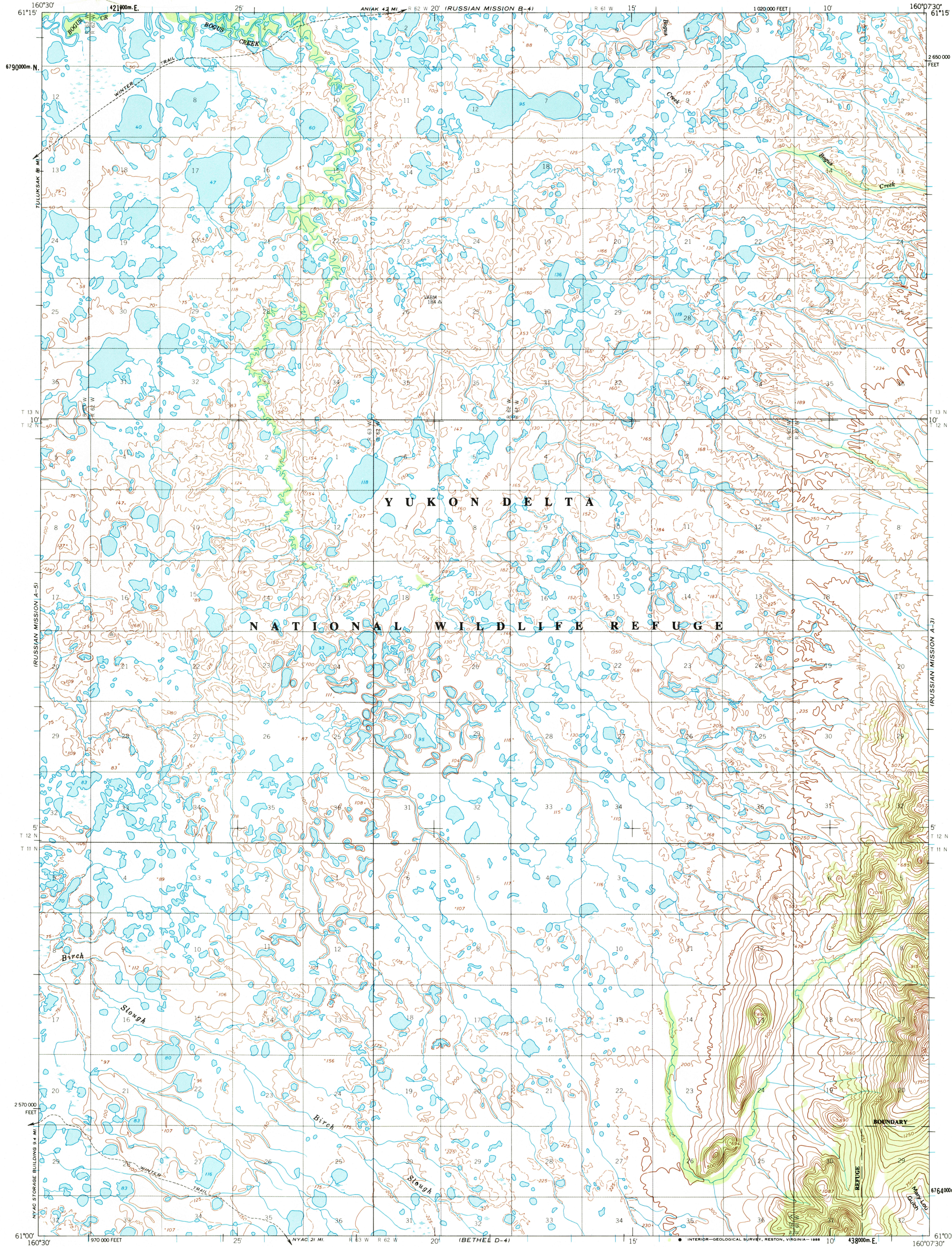
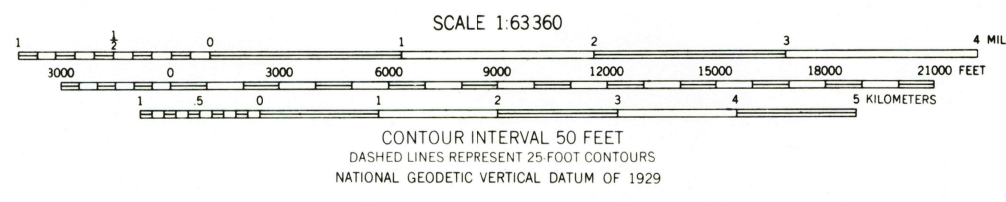
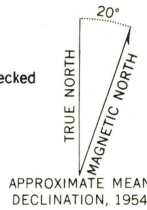


UNITED STATES
DEPARTMENT OF THE INTERIOR
GEOLOGICAL SURVEY

RUSSIAN MISSION (A-4) QUADRANGLE
ALASKA
1:63 360 SERIES (TOPOGRAPHIC)



Mapped by the Defense Mapping Agency
Edited and published by the Geological Survey
Control by NOS/NOAA and USCE
Topography by photogrammetric methods from aerial photographs
taken 1952 and 1954, field annotated 1953 and 1954. Map not field checked
Projection and 1000-meter grid ticks shown in blue:
Universal Transverse Mercator, zone 4
10,000-foot grid ticks based on Alaska coordinate
system, zone 7, 1927 North American Datum
To place on the predicted North American Datum 1927 move
the projection lines 84 meters north and 127 meters east
Land lines represent unsurveyed and unmarked locations
predetermined by the Bureau of Land Management
Folio 5-10, Seward Meridian
Swamps, as portrayed, indicate only the wetter areas,
usually of low relief, as interpreted from aerial photographs
Federal reservation boundaries established by The Alaska National
Interest Lands Conservation Act, PL 96-487, Dec. 2, 1980, are
shown as compiled by the administering agencies
There may be private inholdings within the boundaries of
the National or State reservations shown on this map



RUSSIAN MISSION (A-4), ALASKA
61160-A2-TF-063
1954

ROAD CLASSIFICATION
Trails

USGS NMD HISTORICAL MAP
AUG 02 1988
REC'D FILE COPY