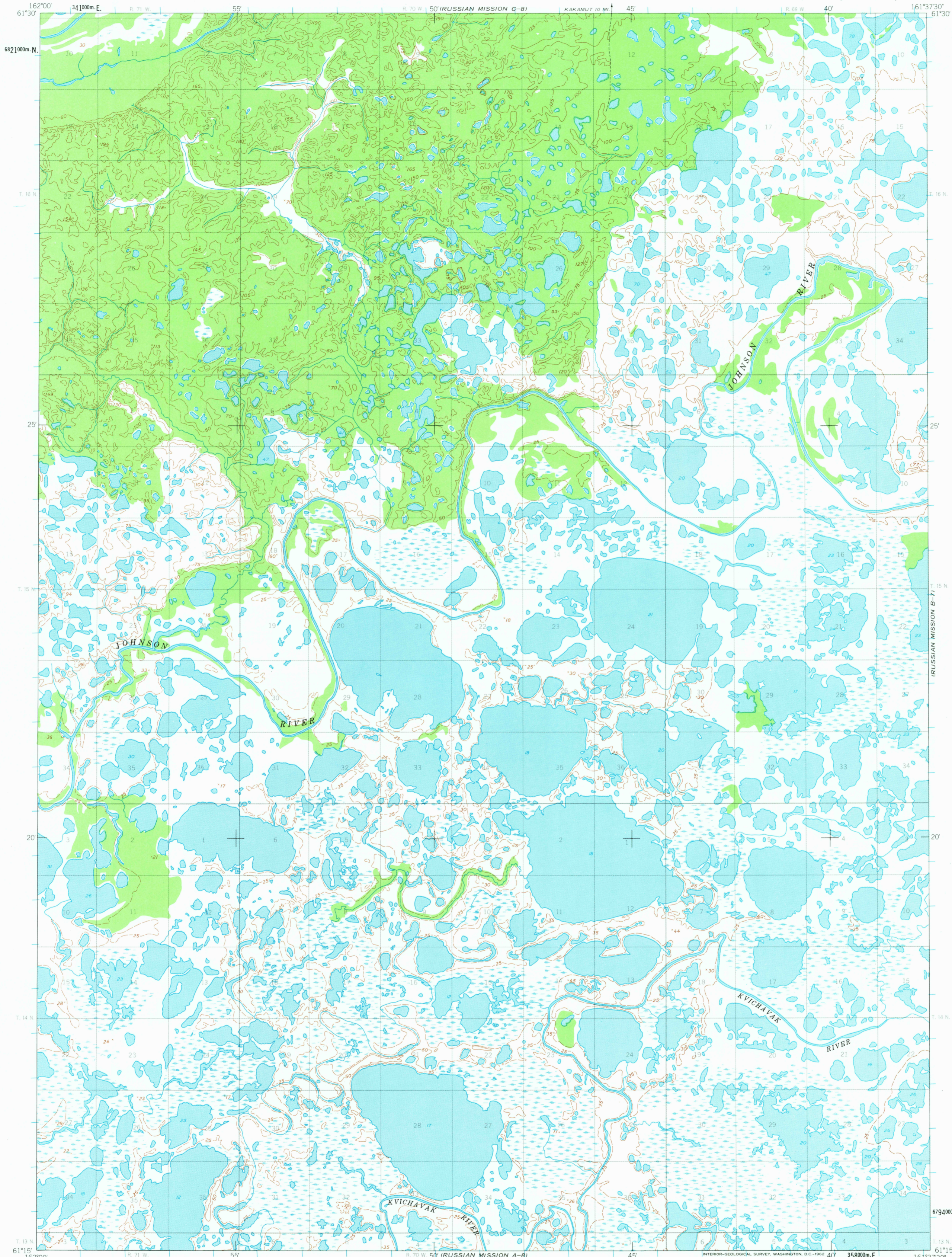


MARSHALL C-7

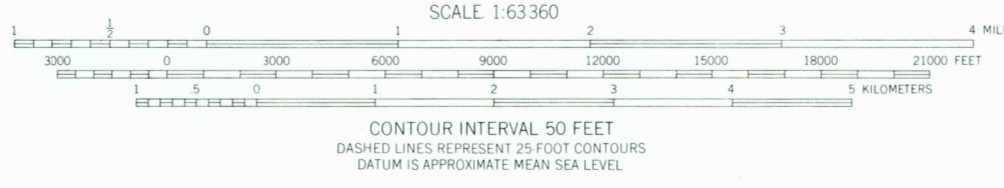
UNITED STATES
DEPARTMENT OF THE INTERIOR
GEOLOGICAL SURVEY

RUSSIAN MISSION (B-8) QUADRANGLE
ALASKA
1:63 360 SERIES (TOPOGRAPHIC)

RUSSIAN MISSION C-7



Mapped by the Army Map Service
Published for civil use by the Geological Survey
Control by USC&GS, and USCE
Topography by photogrammetric methods from
aerial photographs taken 1951-1952
Field annotated 1952. Map not field checked
Universal Transverse Mercator projection
1927 North American datum
1000 meter Universal Transverse Mercator grid ticks,
zone 4, shown in blue
Land lines represent unsurveyed and unmarked locations
determined by the Bureau of Land Management
Folio S.9, Seward Meridian



ROAD CLASSIFICATION
Trails

FOR SALE BY U.S. GEOLOGICAL SURVEY
FAIRBANKS, ALASKA, DENVER 25, COLORADO OR WASHINGTON 25, D.C.
A FOLDER DESCRIBING TOPOGRAPHIC MAPS AND SYMBOLS IS AVAILABLE ON REQUEST

RUSSIAN MISSION (B-8), ALASKA
N6115-W16137.5/15X22.5
1952

RETURN TO:
NHD HISTORICAL MAP ARCHIVES
USGS NATIONAL CENTER, MS-522
RESTON, VA 22092

NOV 18 1981

1102