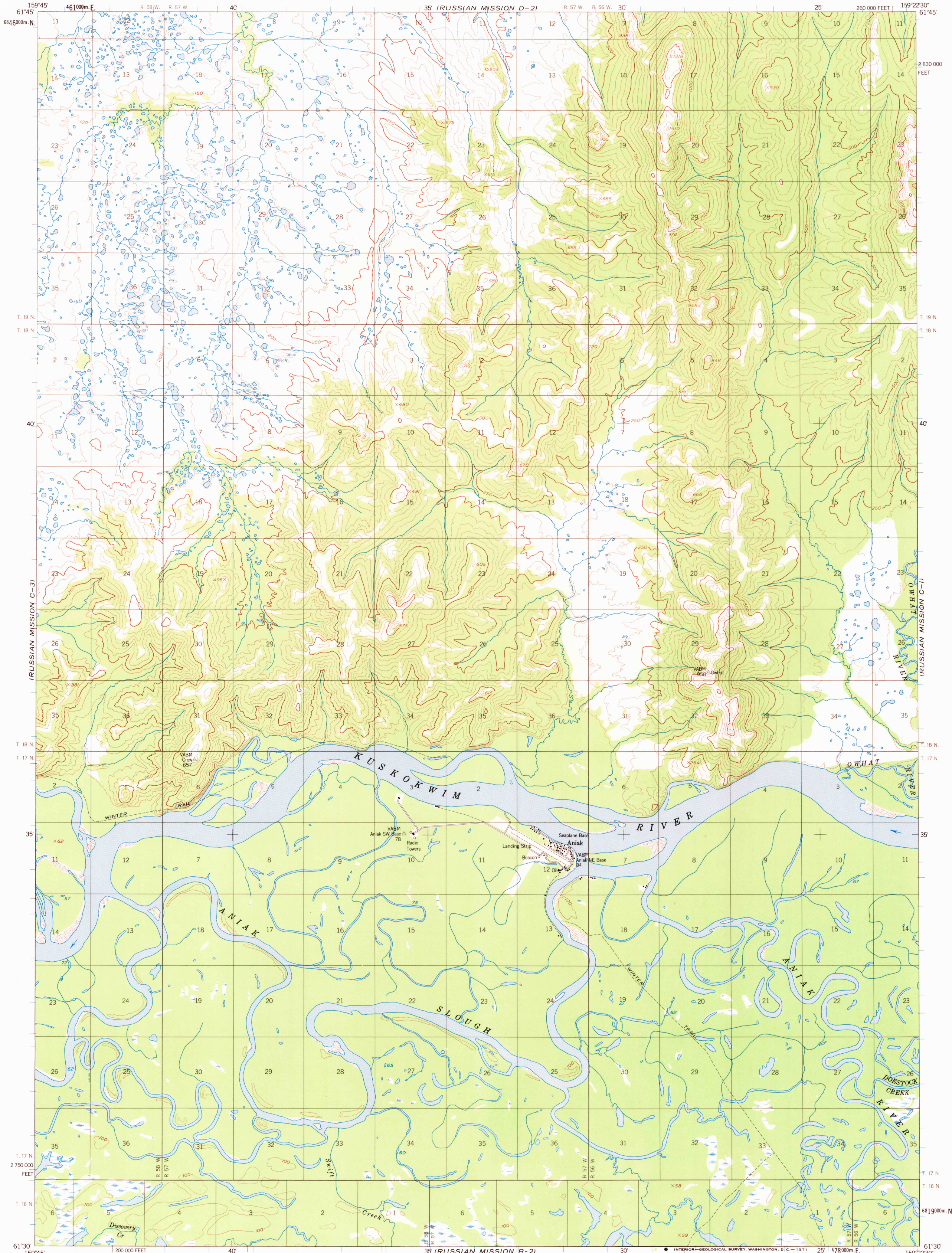
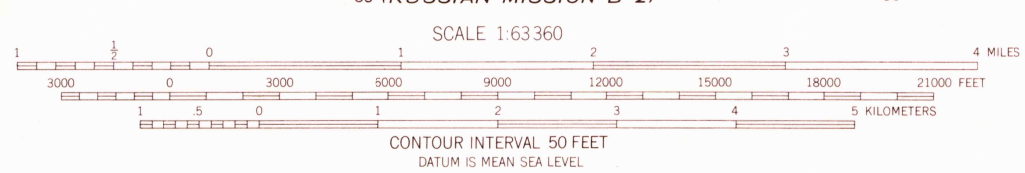
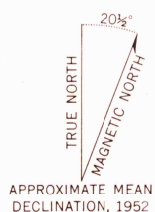


UNITED STATES  
DEPARTMENT OF THE INTERIOR  
GEOLOGICAL SURVEY

RUSSIAN MISSION (C-2) QUADRANGLE  
ALASKA  
1:63 360 SERIES (TOPOGRAPHIC)



Mapped, edited, and published by the Geological Survey  
Control by USC&GS and USCE  
Topography by photogrammetric methods from aerial photographs  
taken 1951-1952, field annotated 1952. Map not field checked  
Universal Transverse Mercator projection, 1927 North American datum  
10,000-foot grid based on Alaska coordinate system, zone 6  
1000-meter Universal Transverse Mercator grid ticks,  
zone 4, shown in blue  
Land lines represent unsurveyed and unmarked locations  
predetermined by the Bureau of Land Management  
Folios S-5, and S-10, Seward Meridian  
Swamps, as portrayed, indicate only the wetter areas,  
usually of low relief, as interpreted from aerial photographs



USGS  
Historical File  
Topographic Division  
ROAD CLASSIFICATION  
Light-duty  
RUSSIAN MISSION (C-2), ALASKA  
N6130-W15922.5/1522.5  
1952  
MINOR REVISIONS 1970

U.S.G.S.  
FILE COPY  
TOPOGRAPHIC DIVISION