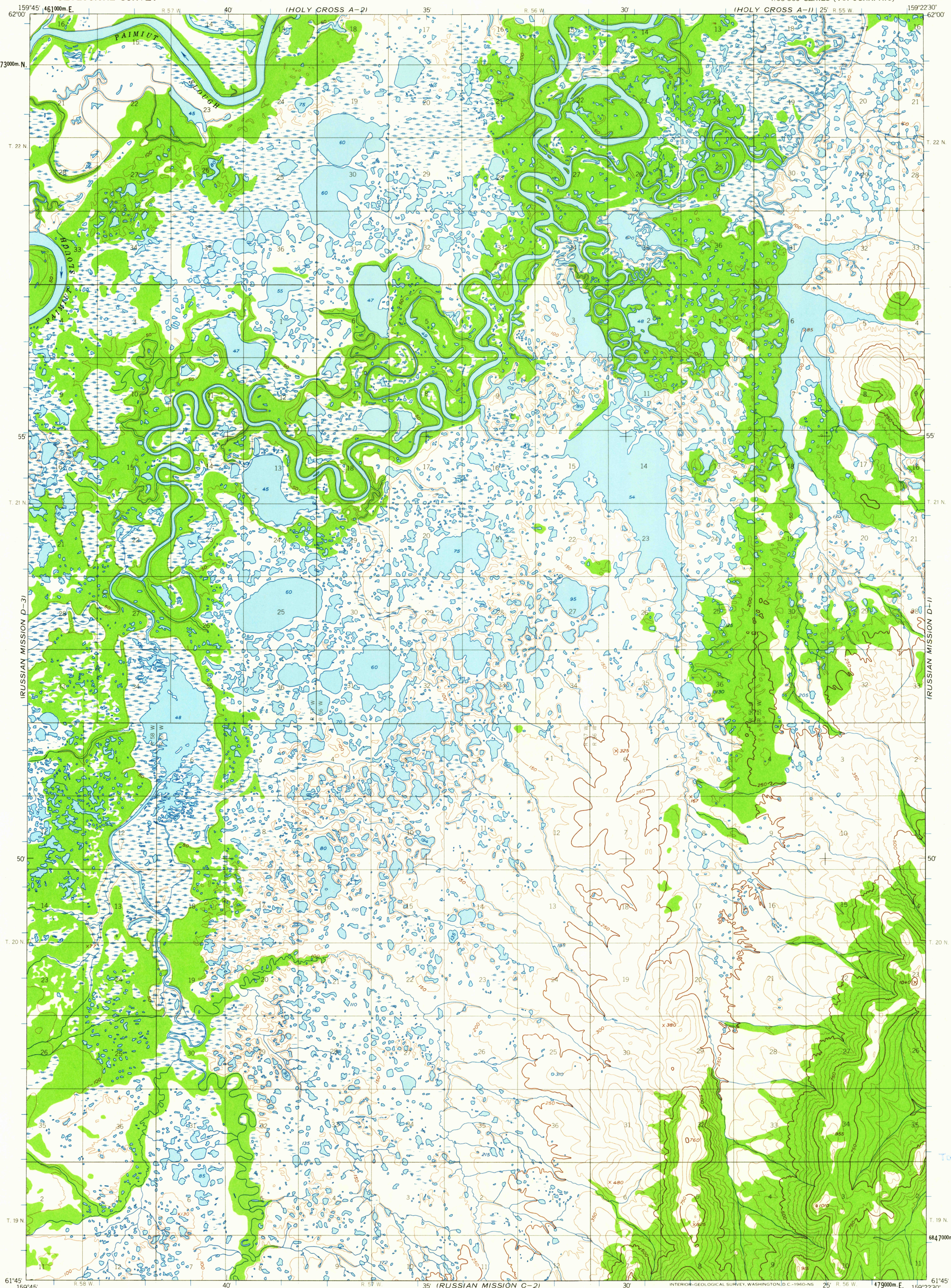
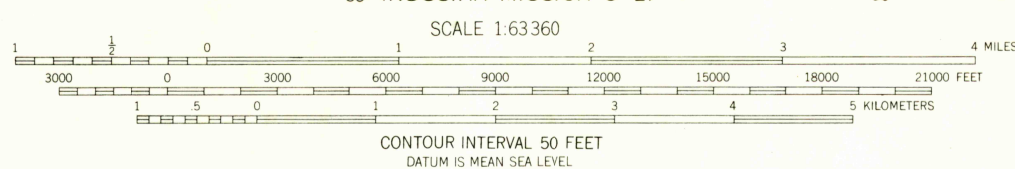
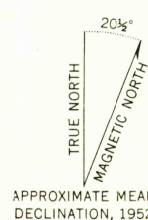


UNITED STATES
DEPARTMENT OF THE INTERIOR
GEOLOGICAL SURVEY

RUSSIAN MISSION (D-2) QUADRANGLE
ALASKA
1:63 360 SERIES (TOPOGRAPHIC)



Mapped, edited, and published by the Geological Survey
Control by USCE
Topography from aerial photographs by photogrammetric
methods 1958. Aerial photographs taken 1951-1952,
field annotated 1952. Map not field checked
Universal Transverse Mercator projection
1927 North American datum
1000-meter Universal Transverse Mercator grid ticks,
zone 4, shown in blue
Land lines represent unsurveyed and unmarked locations
predetermined by the Bureau of Land Management
Folio S-5, Seward Meridian
Swamps, as portrayed, indicate only the wetter areas,
usually of low relief, as interpreted from aerial photographs



RUSSIAN MISSION (D-2), ALASKA
N6145-W15922.5/15X22.5

1952

USGS
Historical File
Topographic Division

USGS
FILE COPY
TOPOGRAPHIC DIVISION

DEC 1 1950

2525