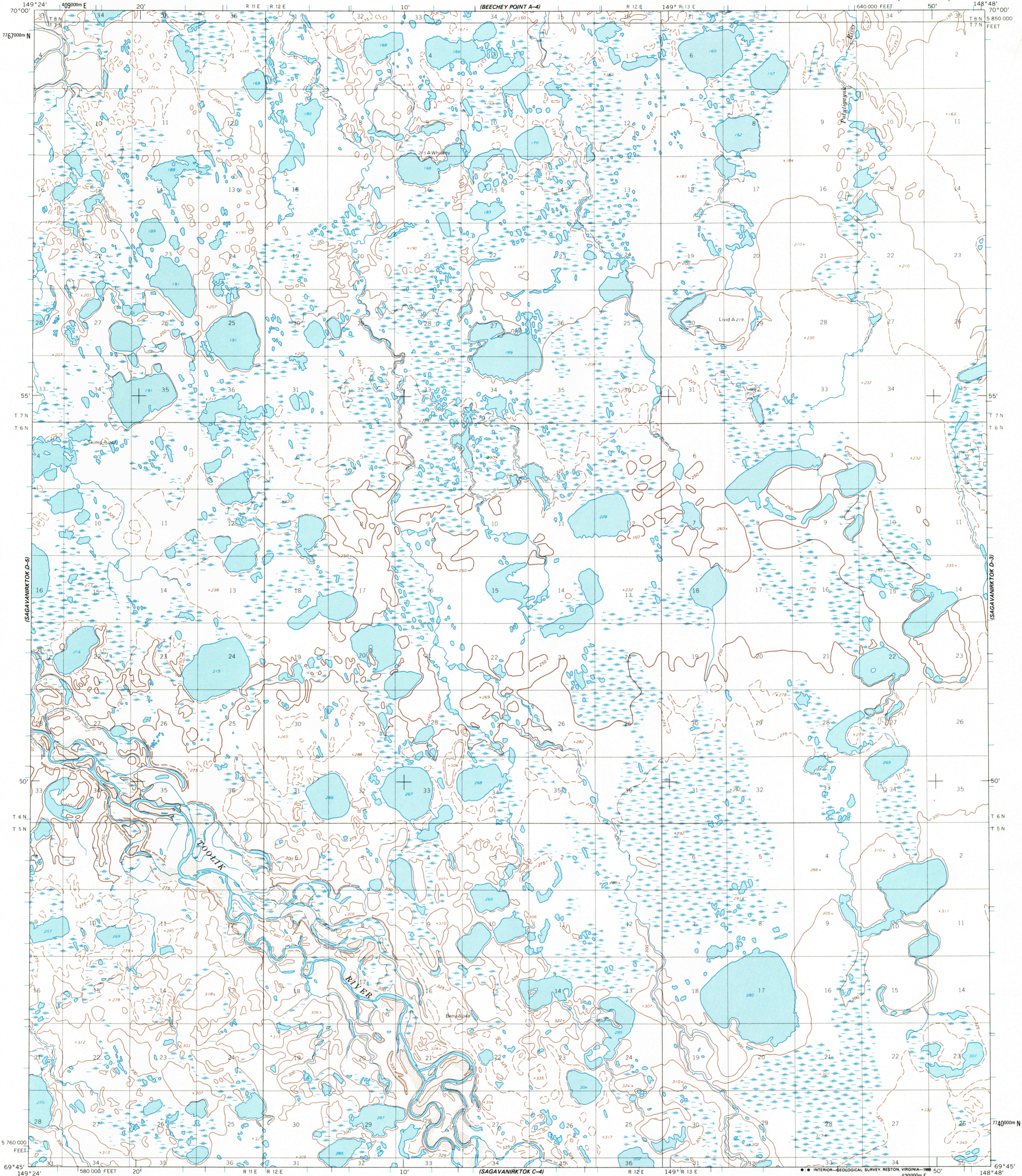
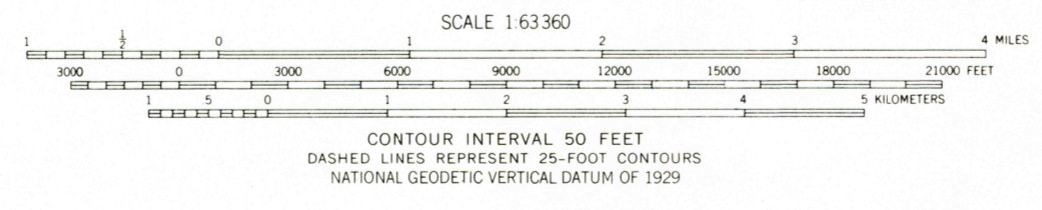
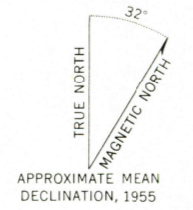


UNITED STATES  
DEPARTMENT OF THE INTERIOR  
GEOLOGICAL SURVEY

SAGAVANIRK TOK (D-4) QUADRANGLE  
ALASKA-NORTH SLOPE BOROUGH  
1:63 360 SERIES (TOPOGRAPHIC)



Mapped by the Defense Mapping Agency  
Edited and published by the Geological Survey  
Control by NOS/NOAA and USCE  
Topography by photogrammetric methods from aerial photographs  
taken 1955, field annotated 1955. Map not field checked  
Projection and 1000-meter grid ticks shown in blue:  
Universal Transverse Mercator, zone 6  
10,000-foot grid ticks based on Alaska coordinate  
system, zone 4, 1927 North American Datum  
To place on the predicted North American Datum 1983 move  
the projection lines 36 meters north and 118 meters east  
Land lines represent unsurveyed and unmarked locations  
predetermined by the Bureau of Land Management  
Folio U.S. Universal Meridian  
Swamps, as portrayed, indicate only the wetter areas,  
usually of low relief, as interpreted from aerial photographs



FOR SALE BY U.S. GEOLOGICAL SURVEY  
FAIRBANKS, ALASKA 99701, DENVER, COLORADO 80225, OR RESTON, VIRGINIA 22092  
A FOLDER DESCRIBING TOPOGRAPHIC MAPS AND SYMBOLS IS AVAILABLE ON REQUEST

SAGAVANIRK TOK (D-4), ALASKA  
N6945-W14848/15-36

1955  
USGS NMD HISTORICAL MAP  
JUL 25 1966  
REC'D FILE COPY