

UNITED STATES
DEPARTMENT OF THE INTERIOR
GEOLOGICAL SURVEY

UNITED STATES
DEPARTMENT OF THE ARMY
CORPS OF ENGINEERS

SELAWIK (A-5) QUADRANGLE
ALASKA—SECOND JUDICIAL DIVISION
1:63 360 SERIES (TOPOGRAPHIC)

ESCHSCHOLTZ BAY

Igloo Pt

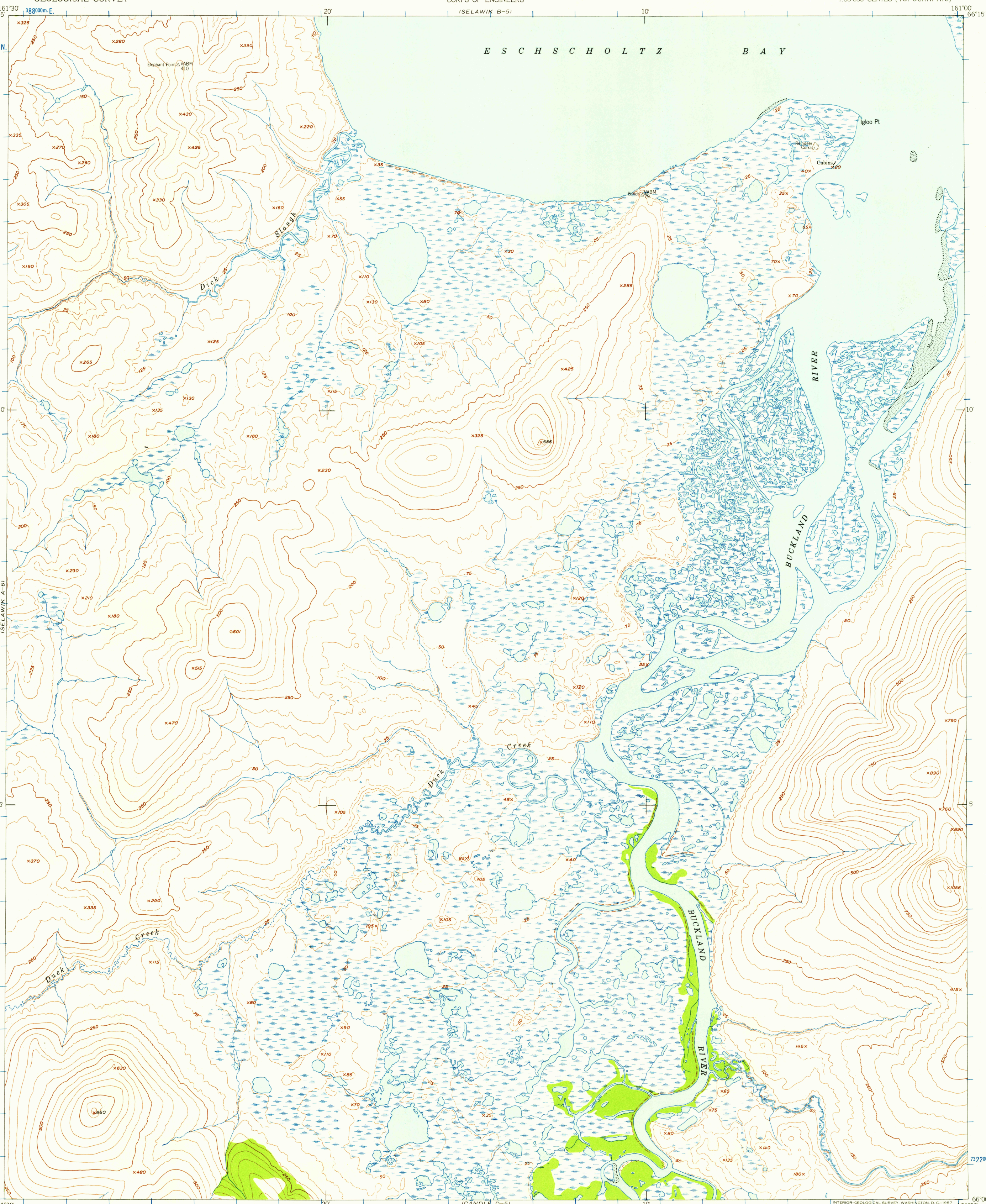
BUCKLAND RIVER

BUCKLAND RIVER

Creek

Dick Creek

Dick Creek



Mapped by the Army Map Service
Published for civil use by the Geological Survey
Control by USC&GS
Topography from aerial photographs by photogrammetric methods
Aerial photographs taken 1951. Map not field checked
Universal Transverse Mercator projection
1927 North American datum
1000-meter Universal Transverse Mercator grid ticks,
zone 4, shown in blue
Unchecked elevations are shown in brown

TRUE NORTH
MAGNETIC NORTH
APPROXIMATE MEAN
DECLINATION, 1951



CONTOUR INTERVAL 50 FEET
DASHED LINES REPRESENT 25 FOOT CONTOURS
DATUM IS MEAN SEA LEVEL
SHORELINE SHOWN REPRESENTS THE APPROXIMATE LINE OF MEAN HIGH WATER
THE AVERAGE RANGE OF TIDE IS APPROXIMATELY 2 FEET
FOR SALE BY U.S. GEOLOGICAL SURVEY
FAIRBANKS, ALASKA DENVER 2, COLORADO WASHINGTON 25, D.C.
A FOLDER DESCRIBING TOPOGRAPHIC MAPS AND SYMBOLS IS AVAILABLE ON REQUEST

USGS
Historical File
Topographic Division

ROAD CLASSIFICATION
No roads or trails in this area



SELAWIK (A-5), ALASKA
N6600-W16100/15X30

1951

U.S.G.S.
FILE COPY
TOPOGRAPHIC DIVISION

NOV 12 1957

1515