

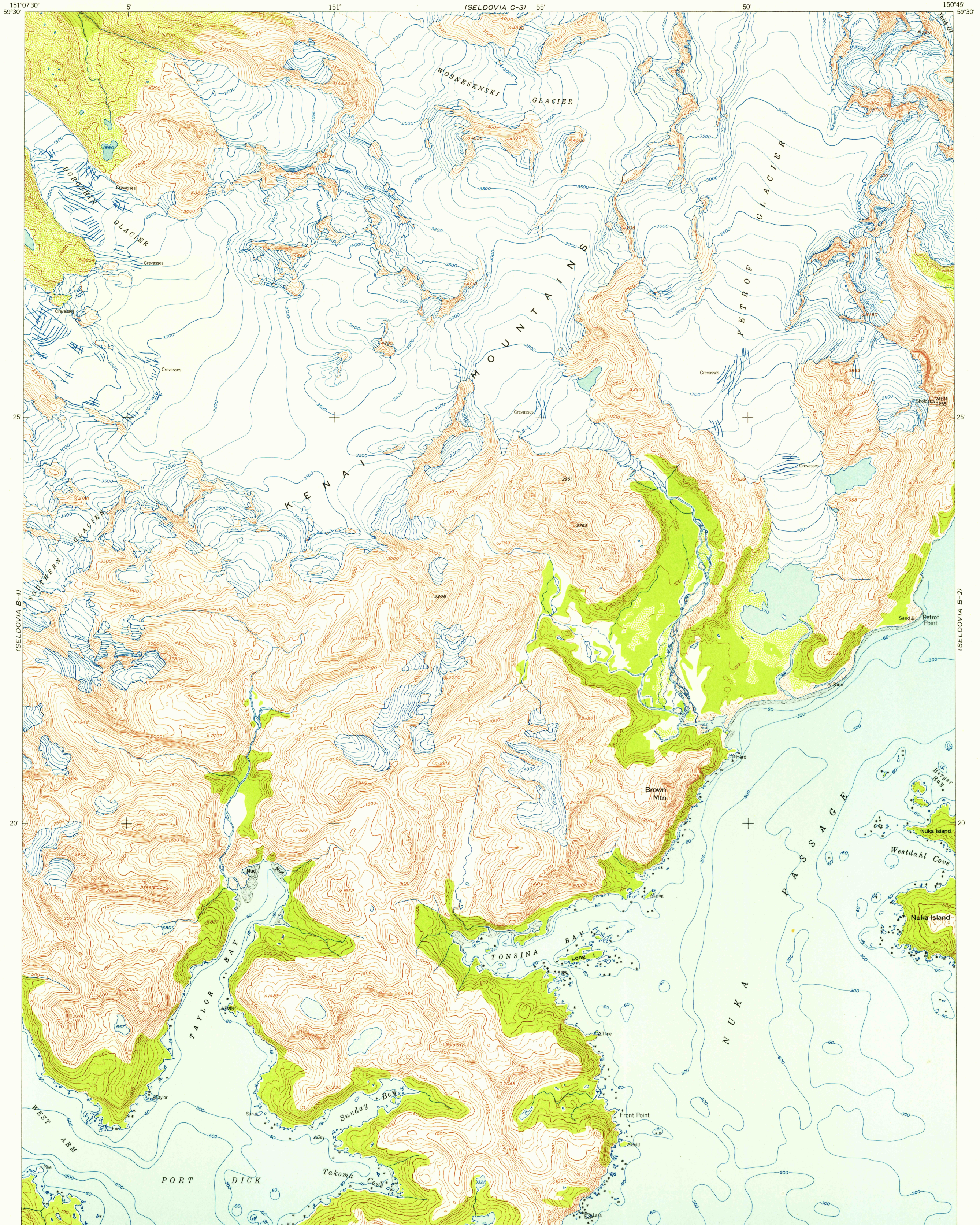
(SELDOVIA C-1)

UNITED STATES
DEPARTMENT OF THE INTERIOR
GEOLOGICAL SURVEY

U.S.G.S.
FILE COPY
TOPOGRAPHIC DIVISION

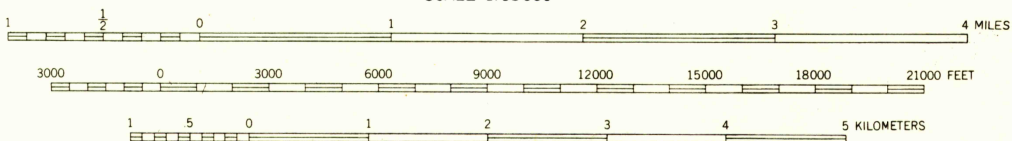
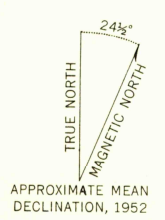
SELDOVIA (B-3) QUADRANGLE
ALASKA—THIRD JUDICIAL DIVISION
1:63 360 SERIES (TOPOGRAPHIC)

(SELDOVIA C-2)

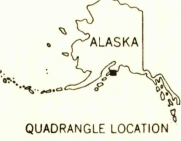


59°15' 151°07'30" 5 151° 55' 50' 150°45' 59°30'

Mapped, edited, and published by the Geological Survey
Control by USC&GS
Hydrography compiled from USC&GS charts 8530 and 8531
Topography from aerial photographs by multiplex methods 1952
Aerial photographs taken 1951
Universal Transverse Mercator projection, zone 5
1927 North American datum
Unchecked elevations are shown in brown and blue



CONTOUR INTERVAL 100 FEET
DOTTED LINES REPRESENT HALF INTERVAL CONTOURS
DATUM IS MEAN SEA LEVEL
DEPTH CURVES IN FEET—DATUM IS MEAN LOWER LOW WATER
SHORELINE SHOWN REPRESENTS THE APPROXIMATE LINE OF MEAN HIGH WATER
THE AVERAGE RANGE OF TIDE IS APPROXIMATELY 10 FEET



ROAD CLASSIFICATION

ALL WEATHER ROADS	DRY WEATHER ROADS
Hard surface.....None	Improved dirt.....None
Other.....None	Unimproved dirt.....None
	Trails.....None

USGS
Historical File
Topographic Division

FOR SALE BY U. S. GEOLOGICAL SURVEY
FAIRBANKS, ALASKA FEDERAL CENTER, DENVER, COLORADO WASHINGTON 25, D. C.
A FOLDER DESCRIBING TOPOGRAPHIC MAPS AND SYMBOLS IS AVAILABLE ON REQUEST

SELDOVIA (B-3), ALASKA
N5915—W15045/15X22.5
1952

U.S.G.S.
FILE COPY
TOPOGRAPHIC DIVISION

MAR 22 1955

(SELDOVIA A-1)

2075