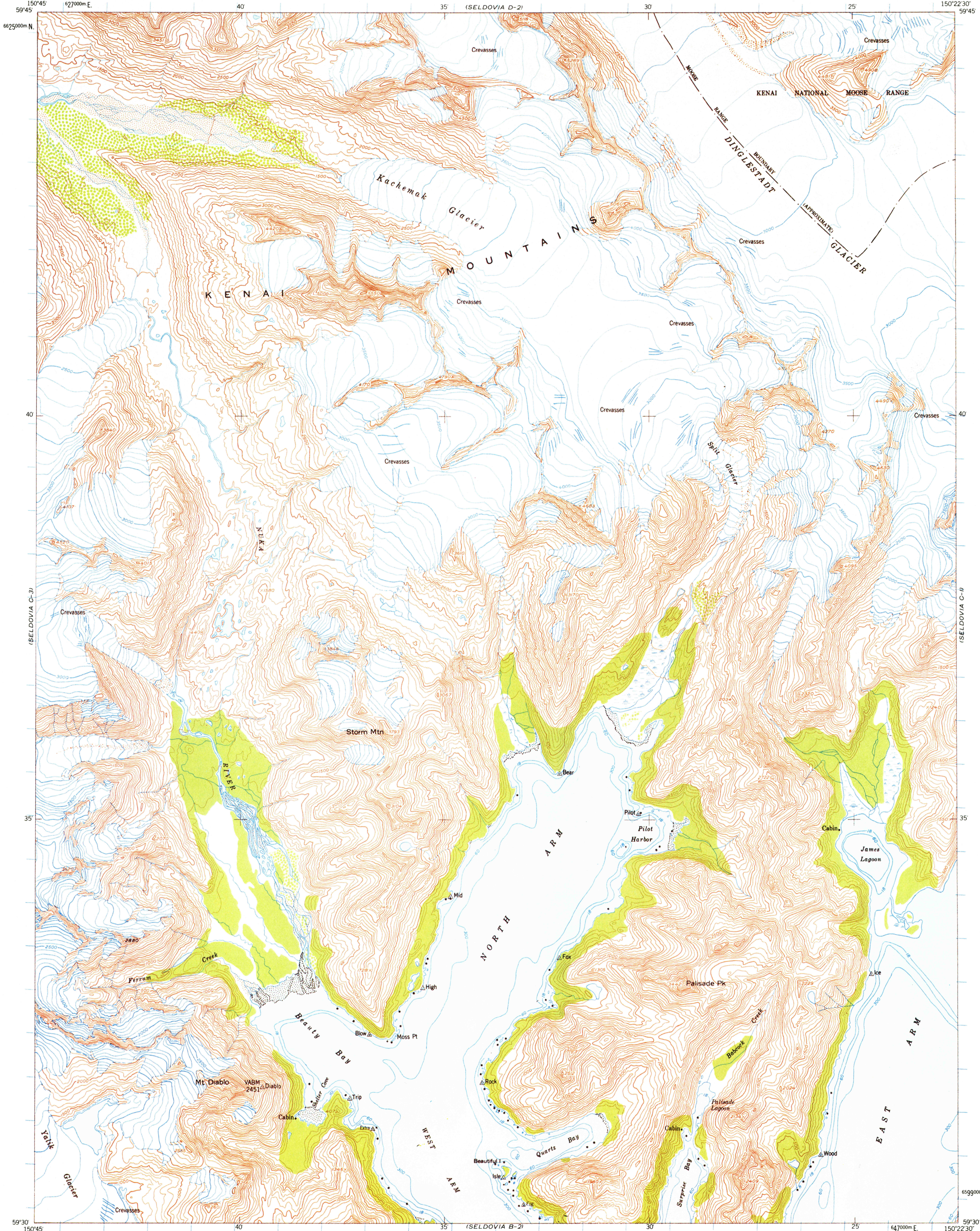
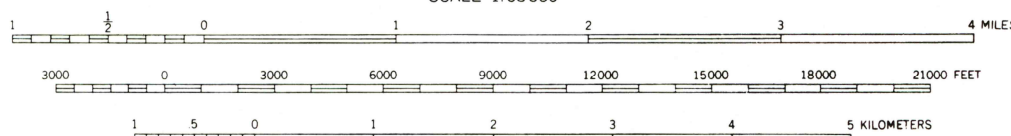
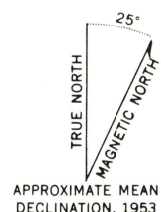


UNITED STATES  
DEPARTMENT OF THE INTERIOR  
GEOLOGICAL SURVEY

SELDOVIA (C-2) QUADRANGLE  
ALASKA—THIRD JUDICIAL DIVISION  
1:63 360 SERIES (TOPOGRAPHIC)



Mapped, edited, and published by the Geological Survey  
Control by USCGS and USCE  
Hydrography compiled from USCGS charts 8530  
and 8552 (1:200,000 Scale)  
Topography from aerial photographs by multiplex methods 1953  
Aerial photographs taken 1951  
Universal Transverse Mercator projection, zone 5  
1927 North American datum  
Unchecked elevations are shown in brown  
1000 meter Universal Transverse Mercator grid ticks,  
zone 5, shown in blue



FOR SALE BY U. S. GEOLOGICAL SURVEY  
DENVER 2, COLORADO WASHINGTON 25, D. C.  
FAIRBANKS, ALASKA  
A FOLDER DESCRIBING TOPOGRAPHIC MAPS AND SYMBOLS IS AVAILABLE ON REQUEST

INTERIOR—GEOLOGICAL SURVEY WASHINGTON, D. C.—1958  
MR 0780  
ROAD CLASSIFICATION  
ALL WEATHER ROADS DRY WEATHER ROADS  
Hard surface.....None Improved dirt.....None  
Other.....None Unimproved dirt.....None  
Trails.....None

SELDOVIA (C-2), ALASKA  
N5930—W15022.5/15X22.5  
1953

This map was reproduced by electronic color scanning of an earlier printing (1958).

USGS  
HISTORICAL FILE  
NATIONAL MAPPING DIVISION

SEP 18 1981

1350