

(SELDOVIA D-1)

(SELDOVIA D-2)

151°07'30"
59°45'

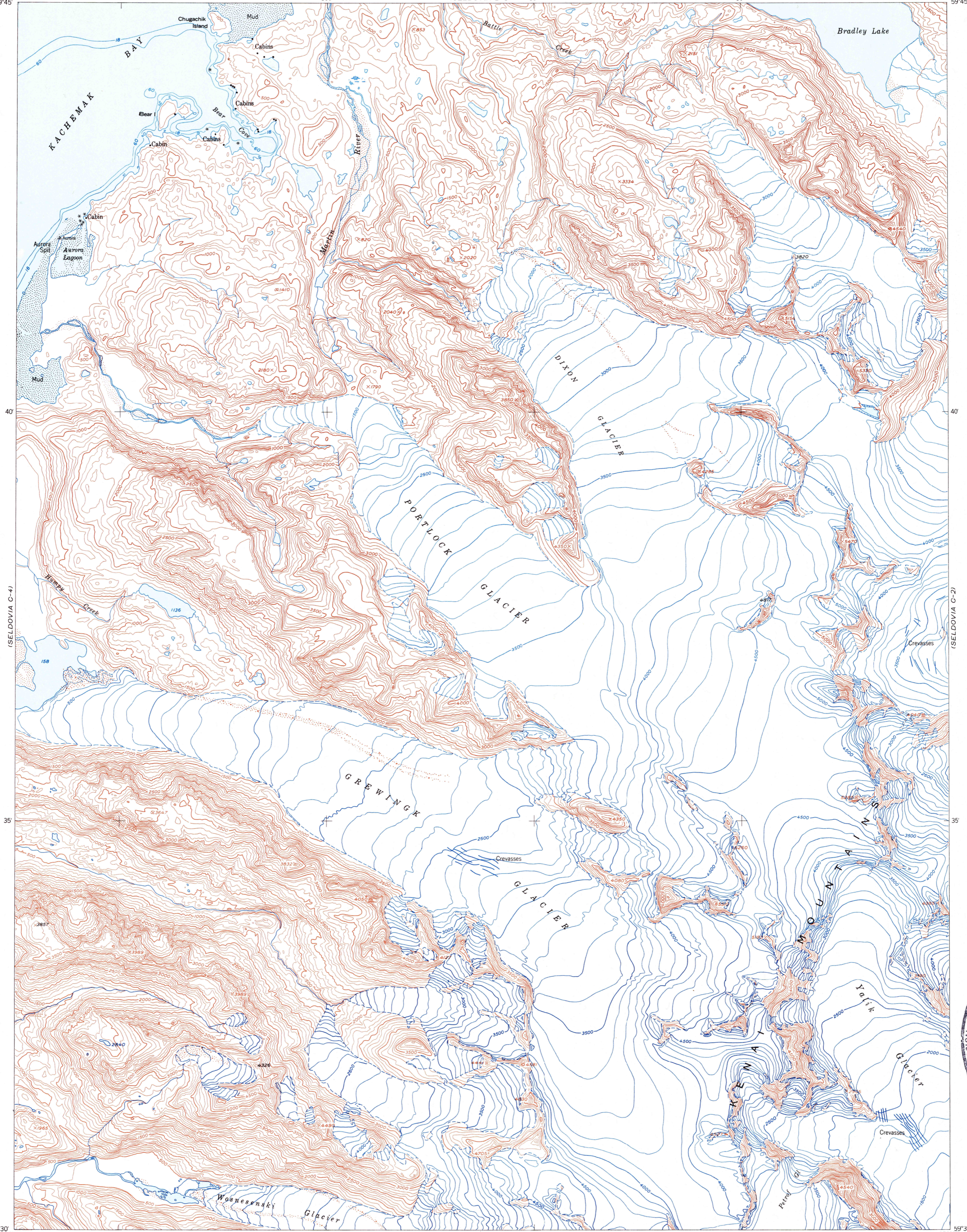
5'

151°

(SELDOVIA D-3) 55'

50'

150°45'
59°45'



(SELDOVIA C-4)

(SELDOVIA C-2)

59°30'
151°07'30"

5'

151°

(SELDOVIA B-3)

50'

150°45'
59°30'

(SELDOVIA B-4)

Mapped, edited, and published by the Geological Survey

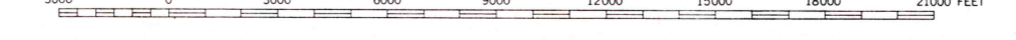
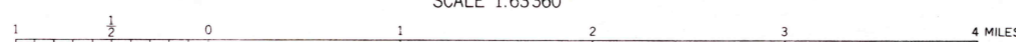
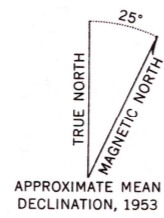
Control by USC&GS and USCE

Hydrography compiled from USC&GS charts 8531, 8552, and 8554 (1:200,000 Scale)

Topography from aerial photographs by multiplex methods 1953
Aerial photographs taken 1951

Universal Transverse Mercator projection, zone 5
1927 North American datum

Unchecked elevations are shown in brown and blue



CONTOUR INTERVAL 100 FEET
DATUM IS MEAN SEA LEVEL

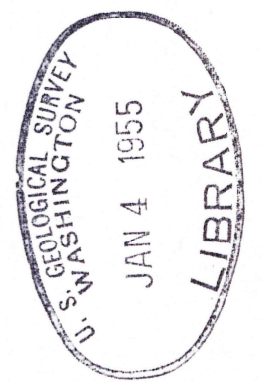
DEPTH CURVES IN FEET—DATUM IS MEAN LOWER LOW WATER
SHORELINE SHOWN REPRESENTS THE APPROXIMATE LINE OF MEAN HIGH WATER
THE AVERAGE RANGE OF TIDE IS APPROXIMATELY 16 FEET



QUADRANGLE LOCATION

ROAD CLASSIFICATION

ALL WEATHER ROADS		DRY WEATHER ROADS	
Hard surface.....	None	Improved dirt.....	None
Other.....	None	Unimproved dirt.....	None
		Trails.....	None



SELDOVIA (C-3), ALASKA
N5930—W15045/15X22.5

1953

FOR SALE BY U.S. GEOLOGICAL SURVEY
FAIRBANKS, ALASKA FEDERAL CENTER, DENVER, COLORADO WASHINGTON 25, D. C.
A FOLDER DESCRIBING TOPOGRAPHIC MAPS AND SYMBOLS IS AVAILABLE ON REQUEST

(SELDOVIA B-2)