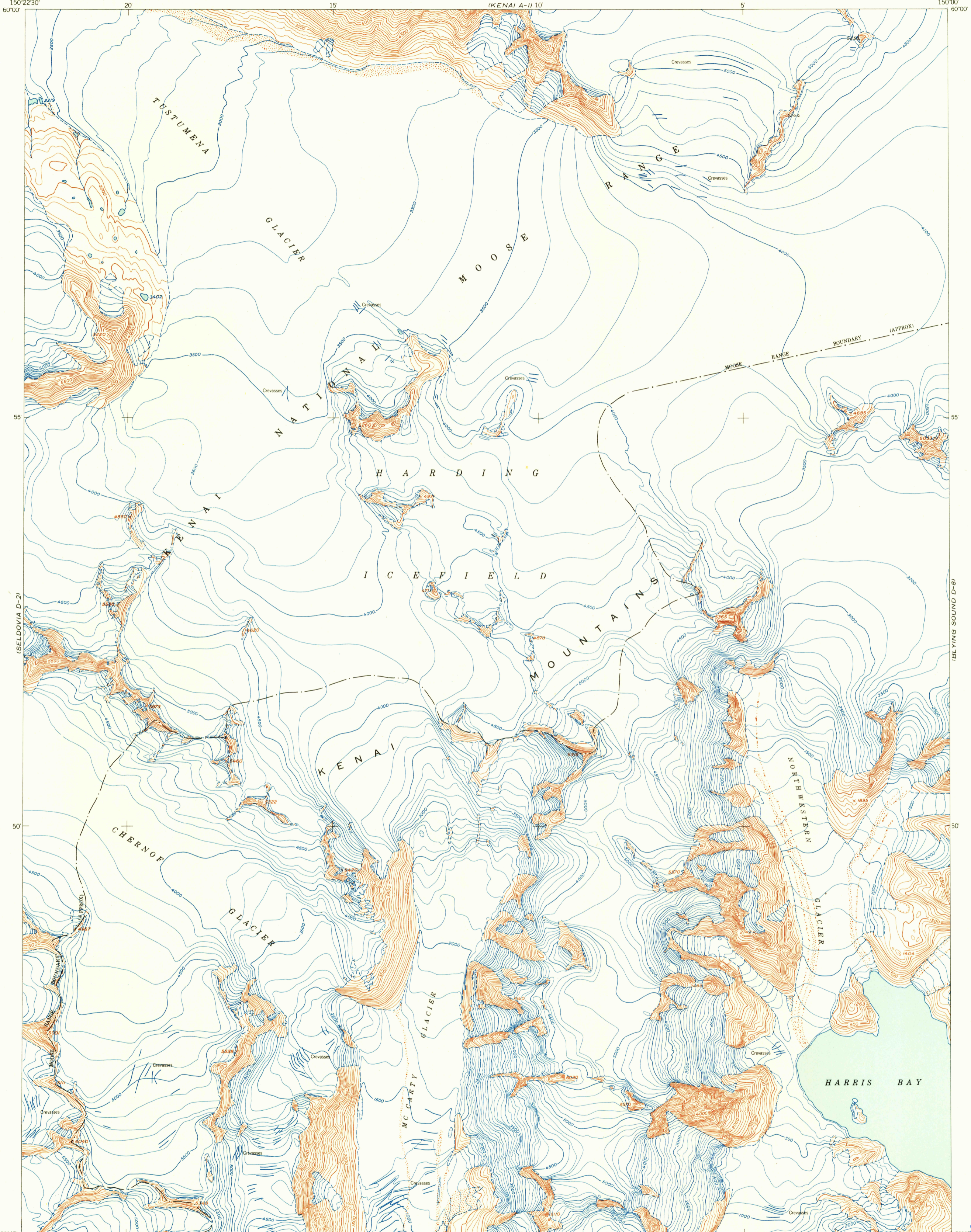


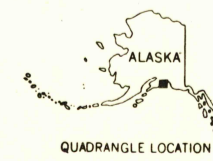
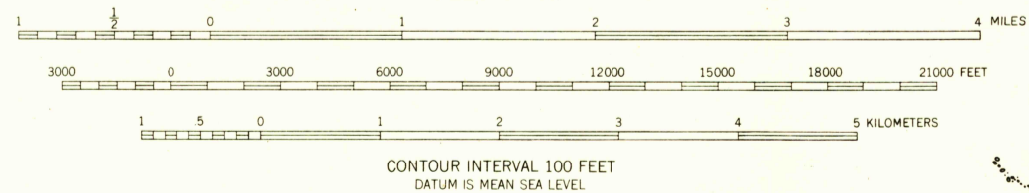
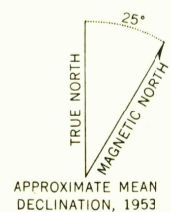
(KENAI A-2)

(SEWARD A-8)



(SELDOVIA C-2)

Mapped, edited, and published by the Geological Survey  
Control by USC&GS and USCE  
Topography from aerial photographs by multiplex methods 1953  
Aerial photographs taken 1950  
Universal Transverse Mercator projection, zone 6  
1927 North American datum  
Unchecked elevations are shown in brown and blue



ROAD CLASSIFICATION

ALL WEATHER ROADS	DRY WEATHER ROADS
Hard-surface.....None	Improved dirt.....None
Other.....None	Unimproved dirt.....None
Trails.....None	

SELDOVIA (D-1), ALASKA  
N5945—W15000/15X22.5  
1953

FOR SALE BY U.S. GEOLOGICAL SURVEY  
FAIRBANKS, ALASKA FEDERAL CENTER, DENVER, COLORADO WASHINGTON, 25, D.C.  
A FOLDER DESCRIBING TOPOGRAPHIC MAPS AND SYMBOLS IS AVAILABLE ON REQUEST

U.S.G.S.  
FILE COPY  
TOPOGRAPHIC DIVISION  
USGS  
Historical File  
Topographic Division

MAR 22 1955

2040