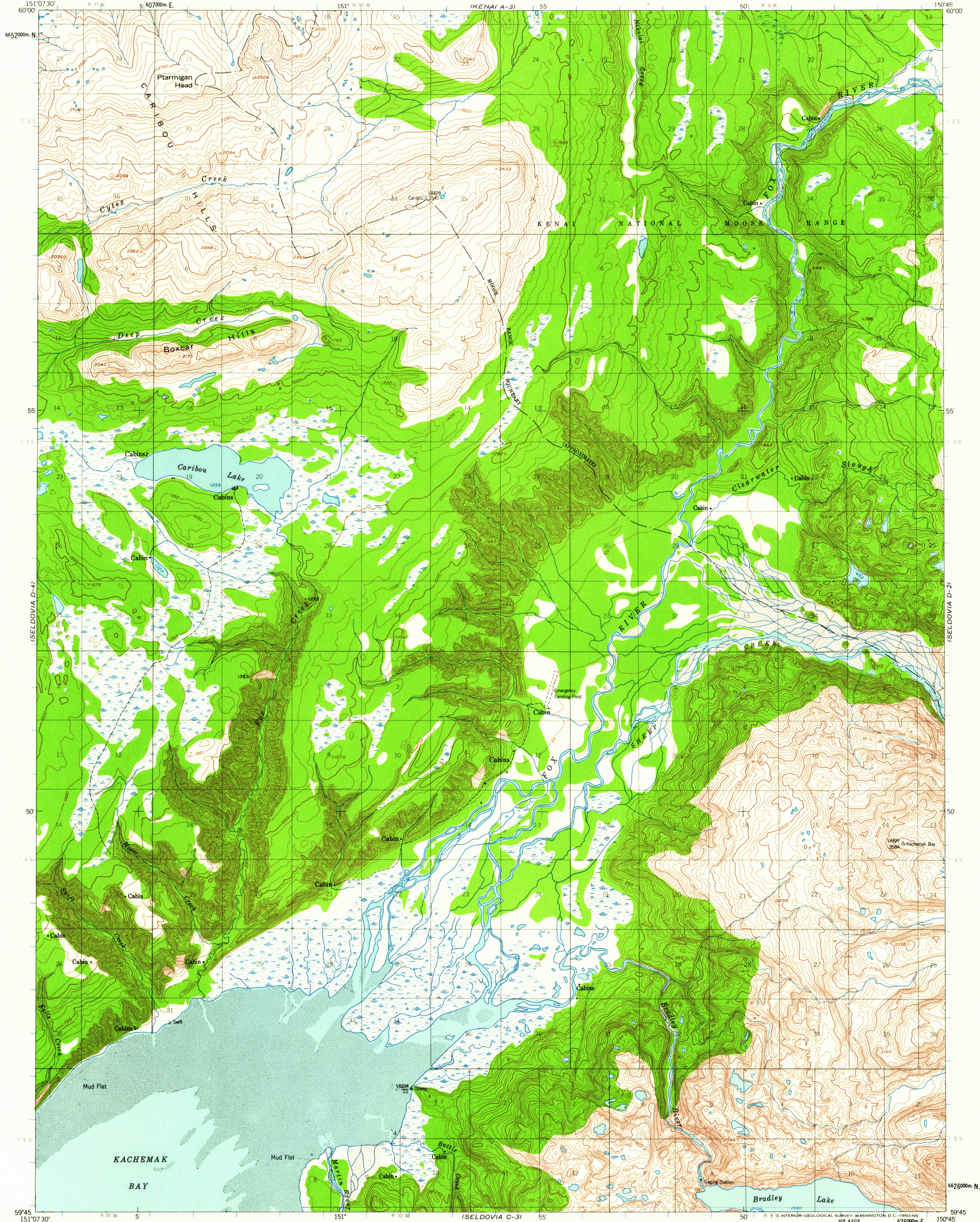


UNITED STATES  
DEPARTMENT OF THE INTERIOR  
GEOLOGICAL SURVEY

SELDOVIA (D-3) QUADRANGLE  
ALASKA  
1:63 360 SERIES (TOPOGRAPHIC)



Mapped, edited, and published by the Geological Survey  
Control by USGS, USC&GS, and USCE

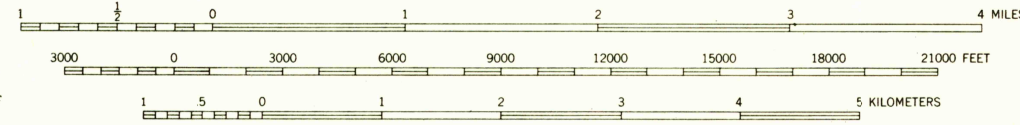
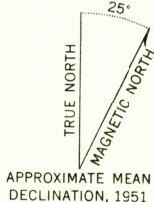
Hydrography compiled from USC&GS charts 8531; and  
8554 (1:200,000 scale)

Topography from aerial photographs by photogrammetric methods 1953

Aerial photographs taken 1950, field annotated 1951. Map not field checked  
Universal Transverse Mercator projection. 1927 North American datum  
1000-meter Universal Transverse Mercator grid ticks,  
zone 5, shown in blue

Land lines represent unsurveyed, unmarked, and approximate locations as  
determined by the Bureau of Land Management in advance of ground surveys  
Folio S-16, Seward Meridian

Swamps, as portrayed, indicate only the wetter areas,  
usually of low relief, as interpreted from aerial photographs  
Unchecked elevations are shown in brown and blue



CONTOUR INTERVAL 50 FEET  
DATUM IS MEAN SEA LEVEL  
SHORELINE SHOWN REPRESENTS THE APPROXIMATE LINE OF MEAN HIGH WATER  
THE AVERAGE RANGE OF TIDE IS APPROXIMATELY 16 FEET

FOR SALE BY U.S. GEOLOGICAL SURVEY  
FAIRBANKS, ALASKA DENVER 25, COLORADO WASHINGTON 25, D. C.  
A FOLDER DESCRIBING TOPOGRAPHIC MAPS AND SYMBOLS IS AVAILABLE ON REQUEST

USGS  
Historical File  
Topographic Division

ROAD CLASSIFICATION  
Trails



QUADRANGLE LOCATION

U.S.G.S.  
FILE COPY  
TOPOGRAPHIC DIVISION

SELDOVIA (D-3), ALASKA  
N5945-W15045/15X22.5

1951  
MINOR REVISIONS 1960

JAN 12 1961

2530