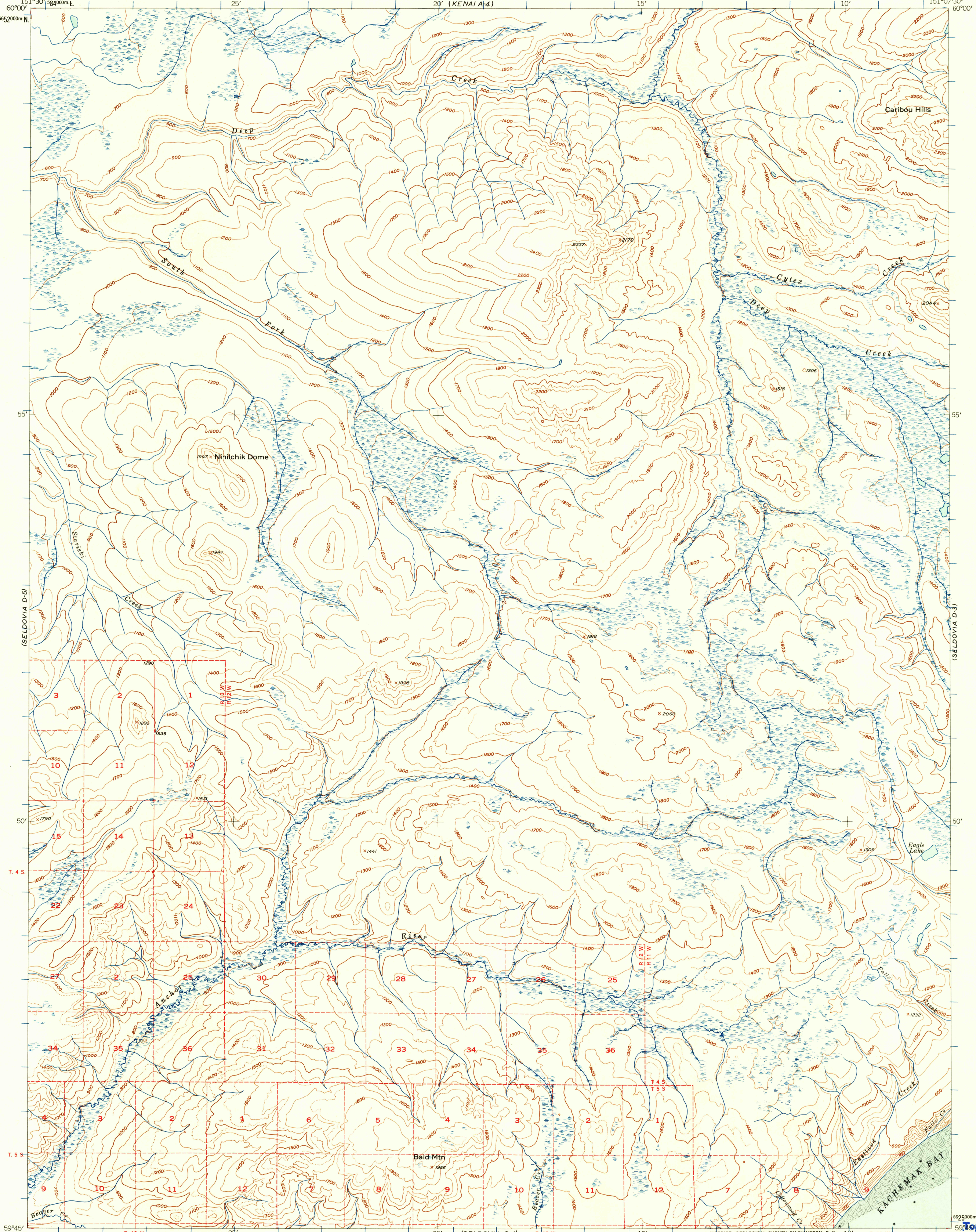
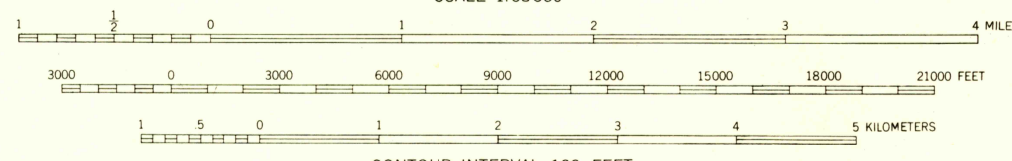
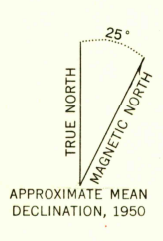


(KENAI A-5)

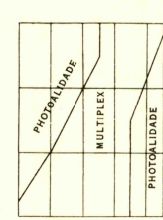
(KENAI A-3)



Mapped, edited, and published by the Geological Survey  
Control by USGS and USC&GS  
Hydrography compiled from USC&GS chart 8554  
Topography from aerial photographs by stereo-  
photogrammetric (multiplex and photolidade)  
methods, 1949  
Universal Transverse Mercator projection, zone 5  
1927 North American datum  
Dashed land lines indicate approximate location  
1000-meter Universal Transverse Mercator grid ticks,  
zone 5, shown in blue



CONTOUR INTERVAL 100 FEET  
DOTTED LINES REPRESENT HALF-INTERVAL CONTOURS  
DATUM IS MEAN SEA LEVEL  
SHORELINE SHOWN REPRESENTS THE APPROXIMATE LINE OF MEAN HIGH WATER  
THE AVERAGE RANGE OF TIDE IS APPROXIMATELY 15 FEET



ROAD CLASSIFICATION  
ALL WEATHER ROADS DRY WEATHER ROADS  
Hard-surface ..... None Improved dirt ..... None  
Other ..... None Unimproved dirt ..... None  
Trails ..... None

SELDOVIA (D-4), ALASKA  
N5945-W15107.5/15X22.5

FOR SALE BY U. S. GEOLOGICAL SURVEY, FEDERAL CENTER, DENVER, COLORADO OR WASHINGTON 25, D. C.  
A FOLDER DESCRIBING TOPOGRAPHIC MAPS AND SYMBOLS IS AVAILABLE ON REQUEST

1949

U.S.G.S.  
FILE COPY  
TOPOGRAPHIC DIVISION

USGS  
Historical File  
Topographic Division

JAN 21 1958

1955