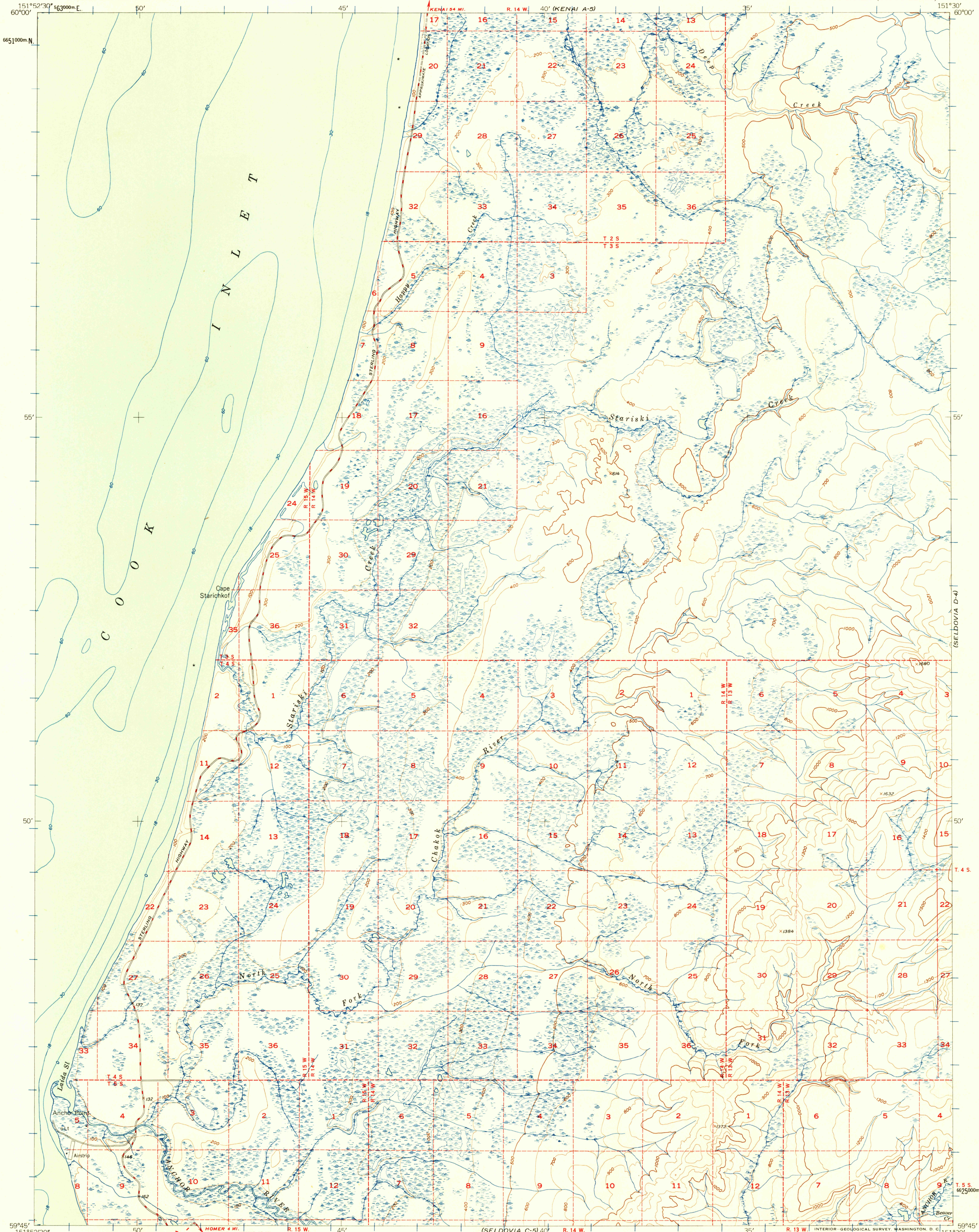
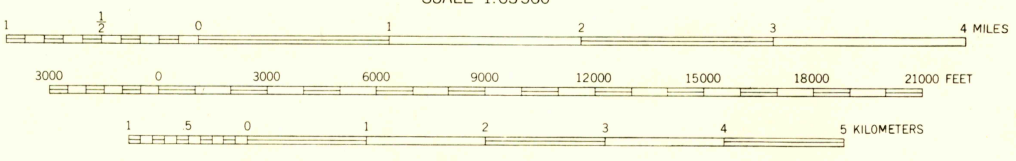
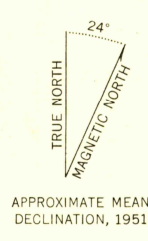


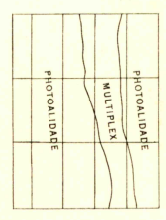
(KENAI A-4)



Mapped, edited, and published by the Geological Survey
Control by USC&GS
Hydrography compiled from USC&GS chart 8554
Topography from aerial photographs by photoalidate and
multiplex methods
Aerial photographs taken September 1946
Universal Transverse Mercator projection, zone 5
1927 North American datum
Dashed land lines indicate approximate location
1000-meter Universal Transverse Mercator grid ticks,
zone 5, shown in blue



CONTOUR INTERVAL 100 FEET
DATUM IS MEAN SEA LEVEL
DEPTH CURVES IN FEET—DATUM IS MEAN LOWER LOW WATER
SHORELINE SHOWN REPRESENTS THE APPROXIMATE LINE OF MEAN HIGH WATER
THE AVERAGE RANGE OF TIDE IS APPROXIMATELY 16 FEET



ROAD CLASSIFICATION
ALL WEATHER ROADS DRY WEATHER ROADS
Hard-surface None Improved dirt
Other Unimproved dirt None
Trails

SELDOVIA (D-5), ALASKA
N5945-W15130/15X22.5
1946

FOR SALE BY U. S. GEOLOGICAL SURVEY
FAIRBANKS, ALASKA DENVER 2, COLORADO WASHINGTON 25, D. C.
A FOLDER DESCRIBING TOPOGRAPHIC MAPS AND SYMBOLS IS AVAILABLE ON REQUEST

U.S.G.S.
FILE COPY
INFORMATION DIVISION
Historical File
Topographic Division