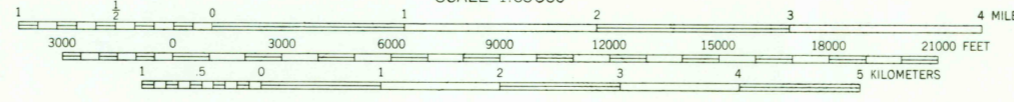
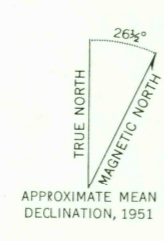




Mapped, edited, and published by the Geological Survey
Control by USC&GS and USCE
Topography by photogrammetric methods from aerial photographs
taken 1950, field annotated 1951. Map not field checked
Selected hydrographic data compiled from USC & GS Charts
8515 (1949), 8523 (1951), and 8524 (1943). This information
is not intended for navigational purposes
Universal Transverse Mercator projection, 1927 North American datum
10,000 foot grid based on Alaska coordinate system, zones 3 and 4
1000 meter Universal Transverse Mercator grid ticks,
zone 6, shown in blue
Land lines represent unsurveyed and unmarked locations
predetermined by the Bureau of Land Management
Folios S-14 and S-15, Seward Meridian
Entire land area is within the Chugach National Forest
except Latoche exclusion area



CONTOUR INTERVAL 100 FEET
DATUM IS MEAN SEA LEVEL
DEPTH CURVES AND SOUNDINGS IN FEET-DATUM IS MEAN LOWER LOW WATER
SHORELINE SHOWN REPRESENTS THE APPROXIMATE LINE OF MEAN HIGH WATER
THE AVERAGE RANGE OF TIDE IS APPROXIMATELY 9 FEET



SEWARD (A-3), ALASKA
N6000-W14745/15X22.5
1951
MINOR REVISIONS 1971

FOR SALE BY U. S. GEOLOGICAL SURVEY
FAIRBANKS, ALASKA 99701, DENVER, COLORADO 80225, OR WASHINGTON, D. C. 20242
A FOLDER DESCRIBING TOPOGRAPHIC MAPS AND SYMBOLS IS AVAILABLE ON REQUEST

ROAD CLASSIFICATION
Trails

USGS
HISTORICAL FILE
TOPOGRAPHIC DIVISION

NOV 3 1972
3570