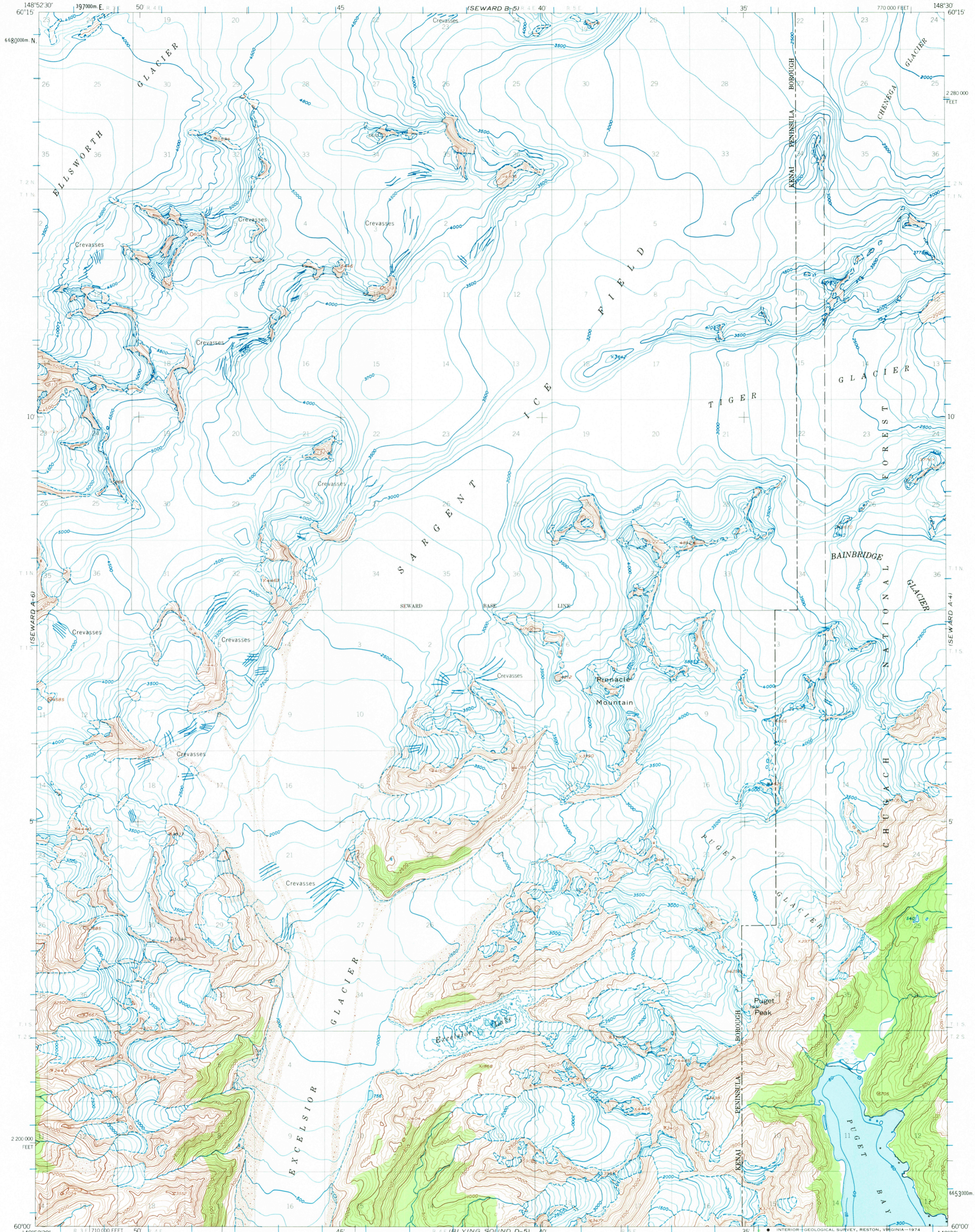


UNITED STATES  
DEPARTMENT OF THE INTERIOR  
GEOLOGICAL SURVEY

SEWARD (A-5) QUADRANGLE  
ALASKA  
1:63 360 SERIES (TOPOGRAPHIC)



Mapped, edited, and published by the Geological Survey

Control by US&GS and USCE

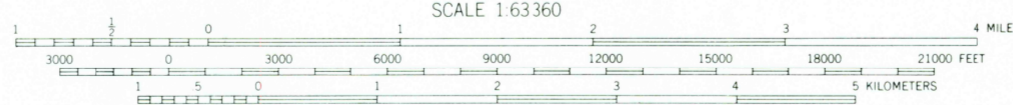
Topography by photogrammetric methods from aerial photographs taken 1950, field annotated 1951. Map not field checked

Selected hydrographic data compiled from US&GS Chart 8528 (1950) (1:81,436 scale). This information is not intended for navigational purposes.

Universal Transverse Mercator projection, 1927 North American datum 10,000-foot grid based on Alaska coordinate system, zone 4 1000-meter Universal Transverse Mercator grid ticks, zone 6, shown in blue

Land lines represent unsurveyed and unmarked locations predetermined by the Bureau of Land Management Folios S-14 and S-15, Seward Meridian

Swamps, as portrayed, indicate only the wetter areas, usually of low relief, as interpreted from aerial photographs



DATUM IS MEAN SEA LEVEL  
DEPTH CURVES IN FEET DATUM IS MEAN LOWER LOW WATER  
SHORELINE SHOWN REPRESENTS THE APPROXIMATE LINE OF MEAN HIGH WATER  
THE AVERAGE RANGE OF TIDE IS APPROXIMATELY 8 FEET



ROAD CLASSIFICATION  
No roads or trails in this area

FOR SALE BY U. S. GEOLOGICAL SURVEY  
FAIRBANKS, ALASKA 99701, DENVER, COLORADO 80225, OR WASHINGTON, D. C. 20242  
A FOLDER DESCRIBING TOPOGRAPHIC MAPS AND SYMBOLS IS AVAILABLE ON REQUEST

SEWARD (A-5), ALASKA  
N6000—W14830/15X22.5

1951  
MINOR REVISIONS 1952

USGS  
Historical File  
Topographic Division

MAY 16 1974

2095