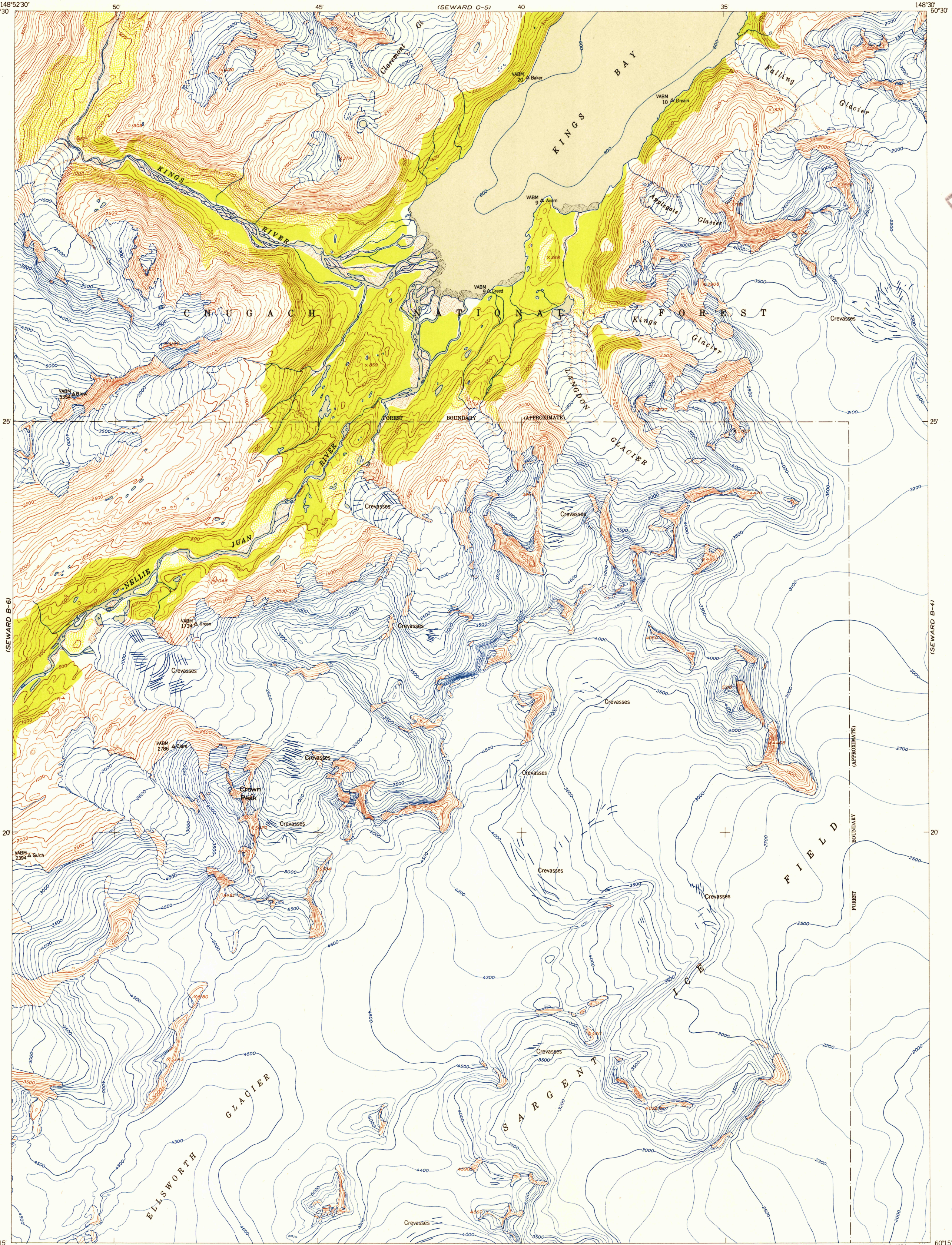
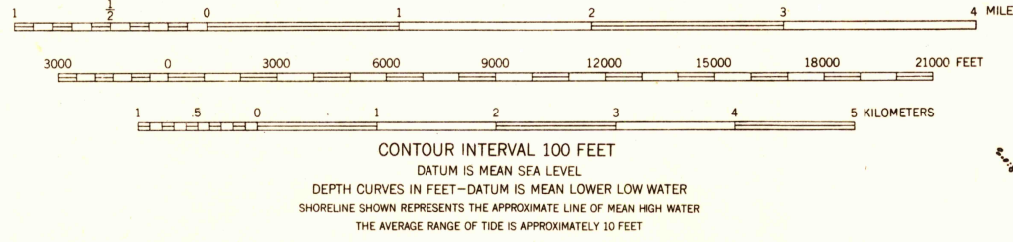
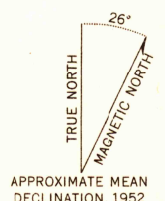


UNITED STATES
DEPARTMENT OF THE INTERIOR
GEOLOGICAL SURVEY

SEWARD (B-5) QUADRANGLE
ALASKA—THIRD JUDICIAL DIVISION
1:63 360 SERIES (TOPOGRAPHIC)



Mapped, edited, and published by the Geological Survey
Control by USC&GS and USCE
Hydrography compiled from USC&GS chart 8517
Topography from aerial photographs by multiplex methods 1952
Aerial photographs taken 1950
Universal Transverse Mercator projection, zone 6
1927 North American datum
Unchecked elevations are shown in brown



ROAD CLASSIFICATION			
ALL WEATHER ROADS	DRY WEATHER ROADS		
Hard-surface.....None	Improved dirt.....None		
Other.....None	Unimproved dirt.....None		
Trails.....None			

SEWARD (B-5), ALASKA
N6015—W14830/15X22.5

1952

FOR SALE BY U. S. GEOLOGICAL SURVEY, FEDERAL CENTER, DENVER, COLORADO OR WASHINGTON 25, D. C.
A FOLDER DESCRIBING TOPOGRAPHIC MAPS AND SYMBOLS IS AVAILABLE ON REQUEST

FILE COPY

FILE COPY

USGS
Historical File
Topographic Division

MAY 7 1954
2135