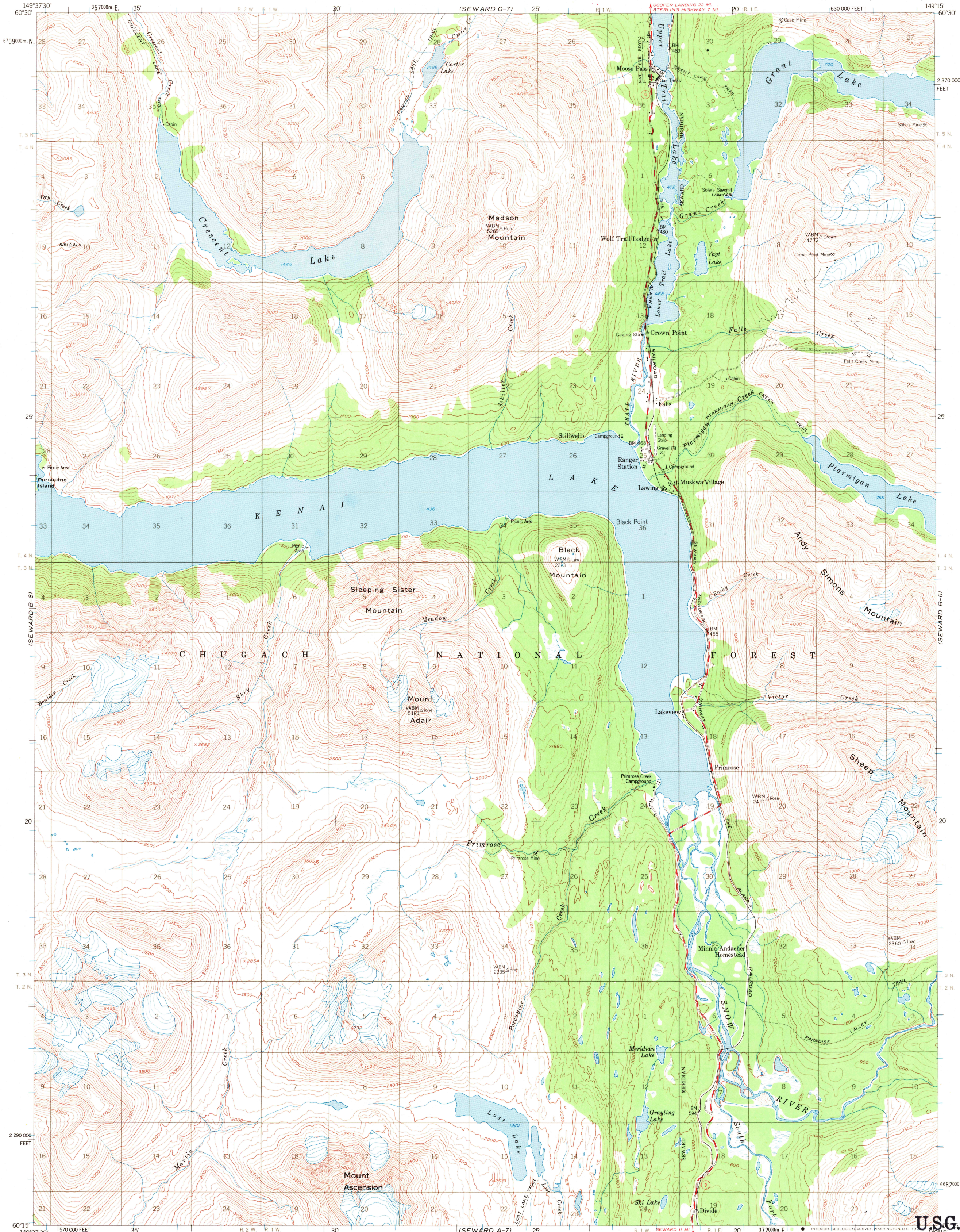


(SEWARD C-6)

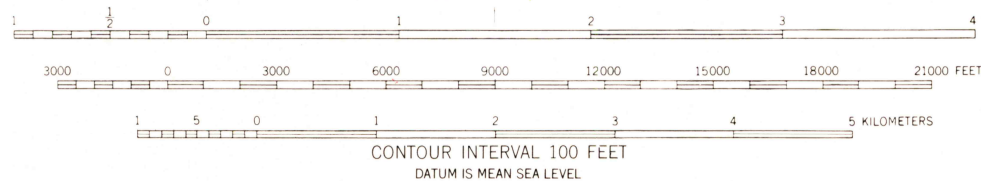
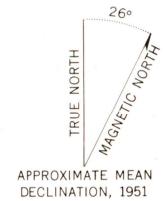
UNITED STATES
DEPARTMENT OF THE INTERIOR
GEOLOGICAL SURVEY

SEWARD (B-7) QUADRANGLE
ALASKA
1:63,360 SERIES (TOPOGRAPHIC)

(SEWARD C-6)



Mapped, edited, and published by the Geological Survey
Control by USCE
Topography by photogrammetric methods from aerial photographs
taken 1951, field annotated 1951. Map not field checked
Universal Transverse Mercator projection, 1927 North American datum
10,000-foot grid based on Alaska coordinate system, zone 4
1000-meter Universal Transverse Mercator grid ticks,
zone 6, shown in blue
Land lines represent unsurveyed and unmarked locations
predetermined by the Bureau of Land Management
Folios S-14 and S-16, Seward Meridian
Swamps, as portrayed, indicate only the wetter areas,
usually of low relief, as interpreted from aerial photographs



FOR SALE BY U. S. GEOLOGICAL SURVEY
FAIRBANKS, ALASKA 99701, DENVER, COLORADO 80225, OR WASHINGTON, D. C. 20242
A FOLDER DESCRIBING TOPOGRAPHIC MAPS AND SYMBOLS IS AVAILABLE ON REQUEST



ROAD CLASSIFICATION
Medium duty — Light duty
Unimproved dirt —
State Route

U.S.G.S.
FILE COPY
TOPOGRAPHIC DIVISION
USGS
Historical File
Topographic Division

SEWARD (B-7) ALASKA
N6015-W14915/15X22.5

1951
MINOR REVISIONS 1970

JUN 4 1971