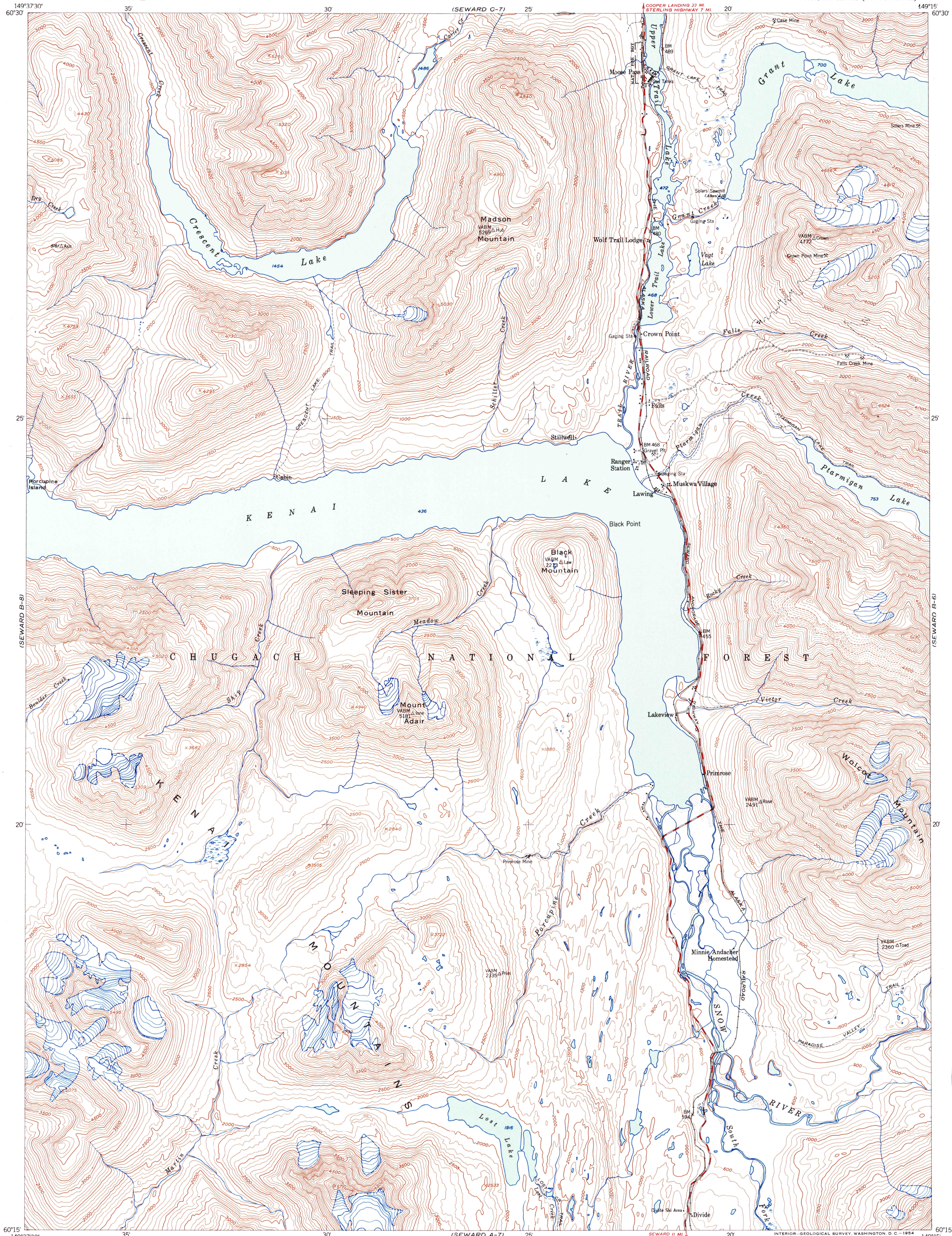


(SEWARD C-8)

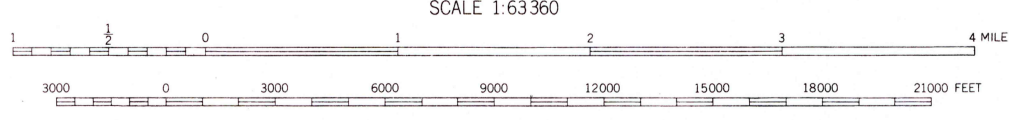
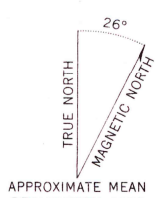
UNITED STATES
DEPARTMENT OF THE INTERIOR
GEOLOGICAL SURVEY

SEWARD (B-7) QUADRANGLE
ALASKA—THIRD JUDICIAL DIVISION
1:63,360 SERIES (TOPOGRAPHIC)

(SEWARD C-6)



Mapped, edited, and published by the Geological Survey
Control by USCGS and USCE
Topography from aerial photographs by multiplex methods 1953
Aerial photographs taken 1951
Universal Transverse Mercator projection, zone 6
1927 North American datum
Unchecked elevations are shown in brown and blue



CONTOUR INTERVAL 100 FEET
AREAS NOT SURVEYED IN DETAIL INDICATED BY BROKEN LINES
DATUM IS MEAN SEA LEVEL



ROAD CLASSIFICATION

ALL WEATHER ROADS	DRY WEATHER ROADS
Hard-surface	Improved dirt
Other	None
	Unimproved dirt
	Trails



SEWARD (B-7) ALASKA
N6015-W14915/15X22.5

1953

FOR SALE BY U. S. GEOLOGICAL SURVEY, FEDERAL CENTER, DENVER, COLORADO OR WASHINGTON 25, D. C.
A FOLDER DESCRIBING TOPOGRAPHIC MAPS AND SYMBOLS IS AVAILABLE ON REQUEST

(SEWARD A-8)

(SEWARD A-6)