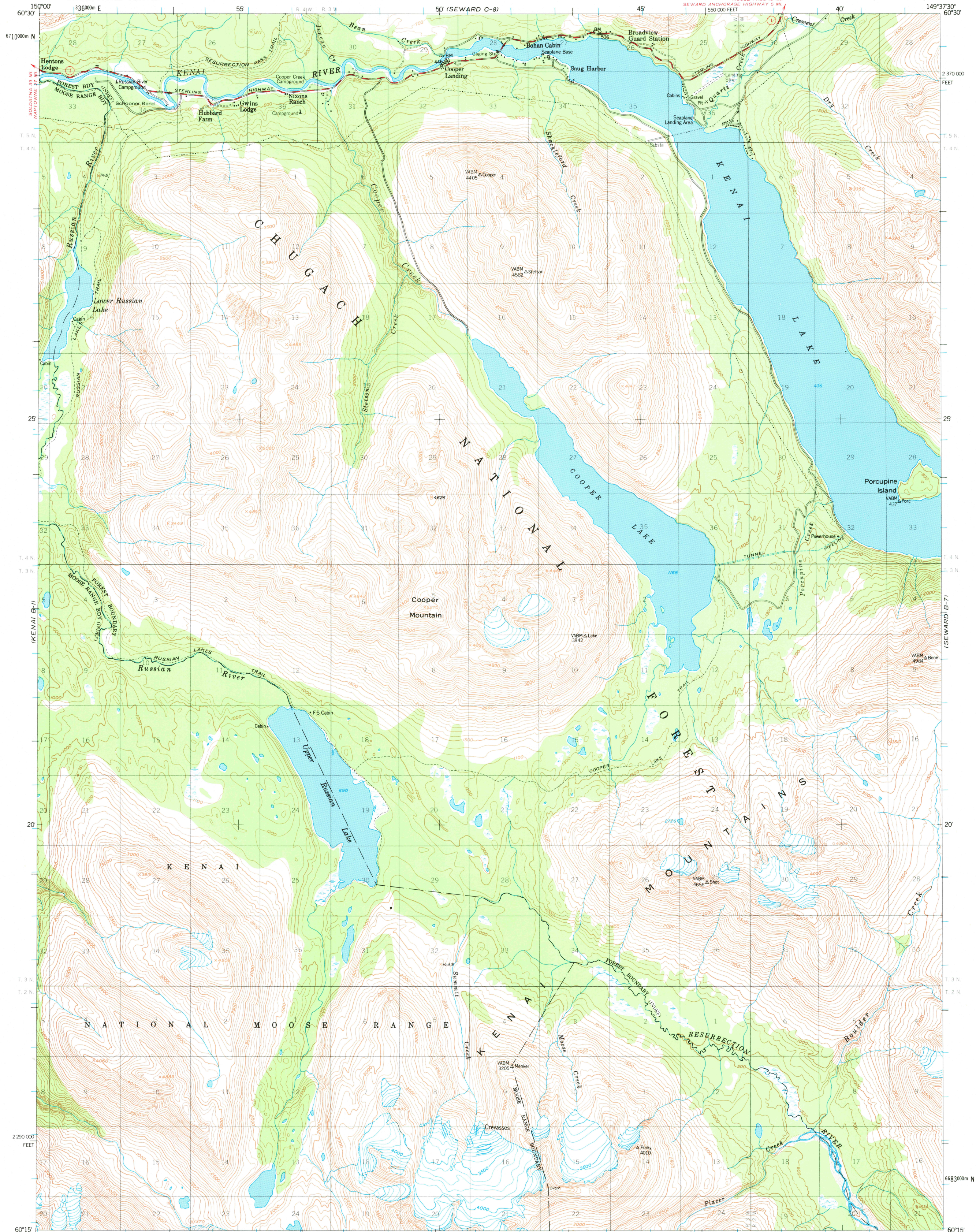


(KENAI C-1)

UNITED STATES
DEPARTMENT OF THE INTERIOR
GEOLOGICAL SURVEY

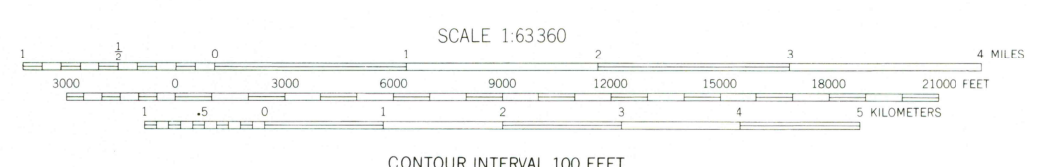
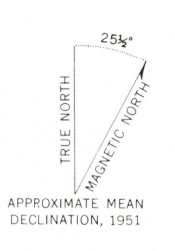
SEWARD (B-8) QUADRANGLE
ALASKA-KENAI PENINSULA BOROUGH
1:63,360 SERIES (TOPOGRAPHIC)

(SEWARD C-7)



(KENAI B-1)

Mapped, edited, and published by the Geological Survey
Control by USCE
Topography by photogrammetric methods from aerial photographs taken 1950, field annotated 1951. Map not field checked
Universal Transverse Mercator projection, 1927 North American datum 10,000 foot grid based on Alaska coordinate system, zone 4 1000 meter Universal Transverse Mercator grid ticks, zone 6, shown in blue
Land lines represent unsurveyed and unmarked locations predetermined by the Bureau of Land Management Folio S-16, Seward Meridian
Swamps, as portrayed, indicate only the wetter areas, usually of low relief, as interpreted from aerial photographs



CONTOUR INTERVAL 100 FEET
NATIONAL GEODETIC VERTICAL DATUM OF 1929



ROAD CLASSIFICATION
Medium-duty ——— Light-duty ———
Unimproved dirt - - - - -
State Route ○

SEWARD (B-8), ALASKA
N6015-W14937.5/15X22.5

1951
MINOR REVISIONS 1976

FOR SALE BY U.S. GEOLOGICAL SURVEY
FAIRBANKS, ALASKA 99701, DENVER, COLORADO 80225 OR RESTON, VIRGINIA 22092
A FOLDER DESCRIBING TOPOGRAPHIC MAPS AND SYMBOLS IS AVAILABLE ON REQUEST

USGS
Historical File
Topographic Division

6300
FEB 08 1978

(SEWARD A-7)