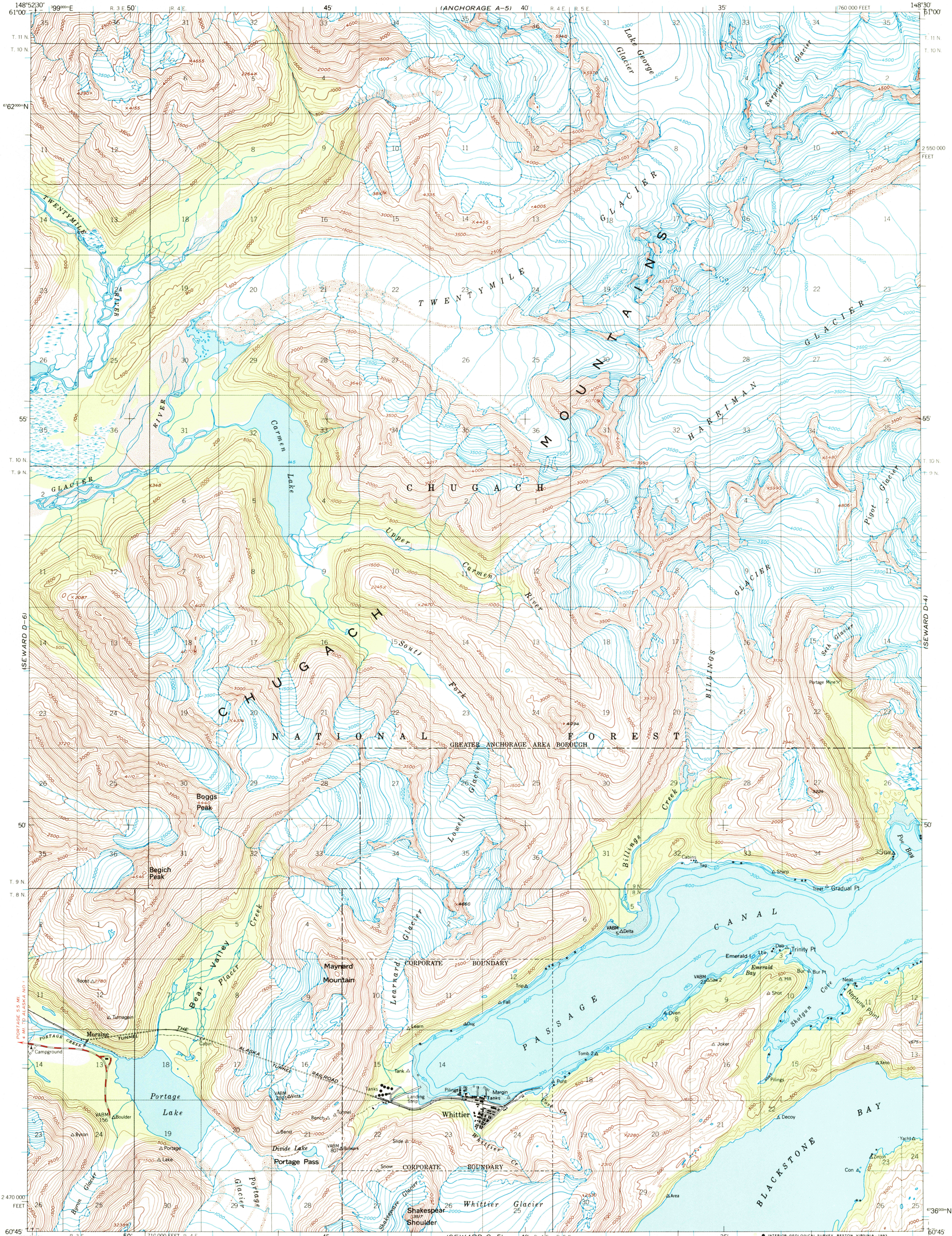
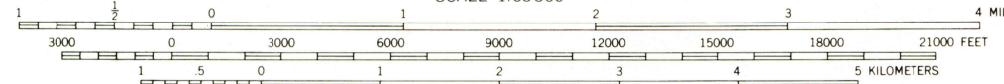
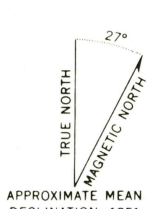


UNITED STATES
DEPARTMENT OF THE INTERIOR
GEOLOGICAL SURVEY

SEWARD (D-5) QUADRANGLE
ALASKA
1:63 360 SERIES (TOPOGRAPHIC)



Produced by the United States Geological Survey
Control by NOS/NOAA and USCE
Compiled from aerial photographs taken 1950,
field annotated 1951. Map not field checked.
Selected hydrographic data compiled from NOS/NOAA chart 16700, (1950),
16705, (1952), and 16706 (1951).
This information is not intended for navigational purposes.
1927 North American Datum (NAD 27). Projection and
10000-foot ticks: Alaska Coordinate System, zone 4 (Transverse Mercator).
Blue 1000-meter Universal Transverse Mercator ticks, zone 6.
North American Datum of 1983 (NAD 83) is shown by dashed corner ticks.
The values of the shift between NAD 27 and NAD 83 for 7.5-minute
intersections are given in USGS Bulletin 1875.
There may be private inholdings within the boundaries
of the National or State reservations shown on this map.
Land lines represent unsurveyed and unmarked locations
predetermined by the Bureau of Land Management.
Folio S-14, Seward Meridian.
Swamps, as portrayed, indicate only wetter areas,
usually of low relief, as interpreted from aerial photographs.



CONTOUR INTERVAL 100 FEET
NATIONAL GEODETIC VERTICAL DATUM OF 1929
DEPTH CURVES IN FEET-DATUM IS MEAN LOWER LOW WATER
SHORELINE SHOWN REPRESENTS THE APPROXIMATE LINE OF MEAN HIGH WATER
THE MEAN RANGE OF TIDE IS APPROXIMATELY 10 FEET



ROAD CLASSIFICATION
Medium-duty ——— Light-duty ———
Unimproved dirt ———

SEWARD (D-5), ALASKA
60148-G5-1F-063
1951
MINOR REVISION 1966

