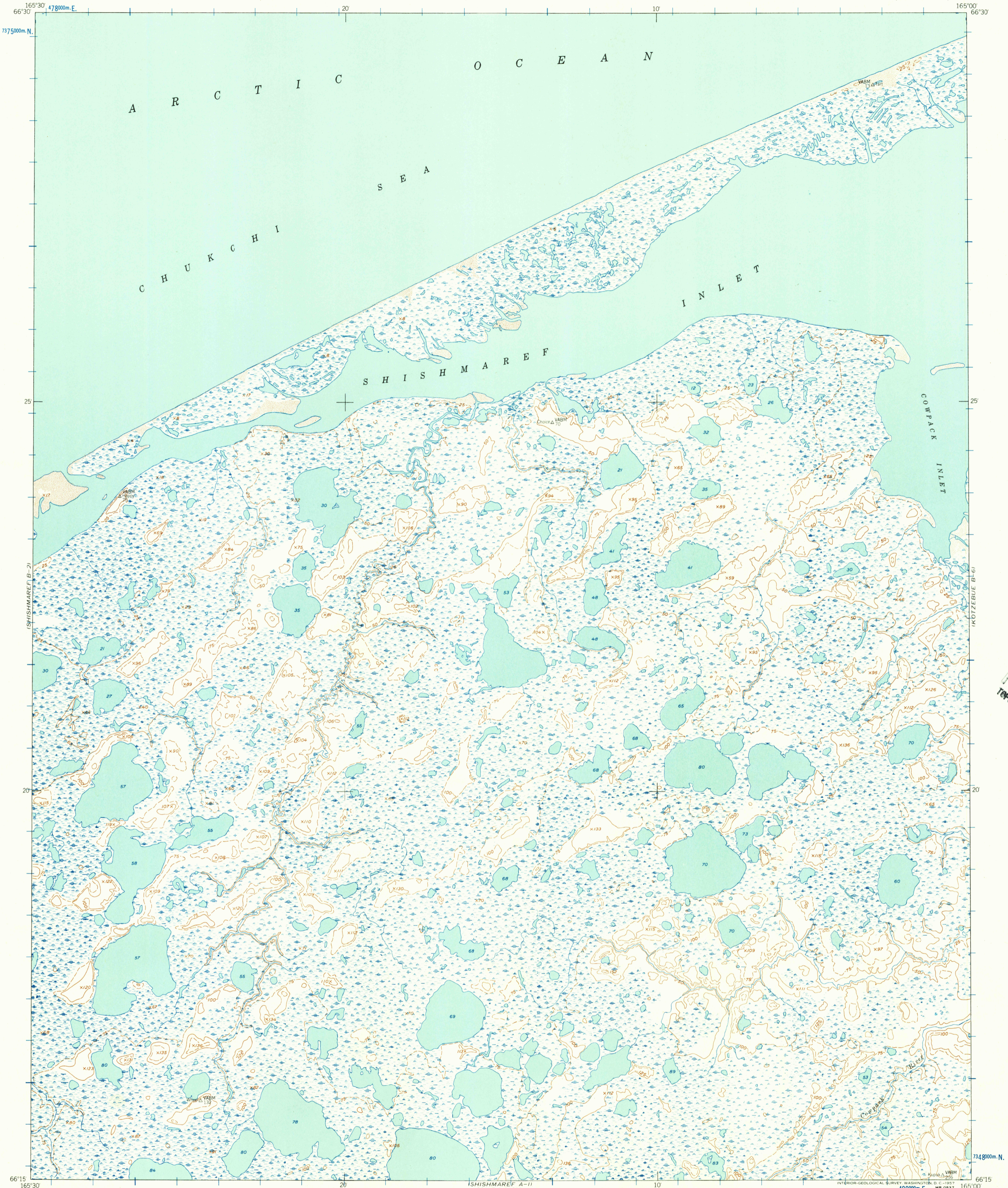


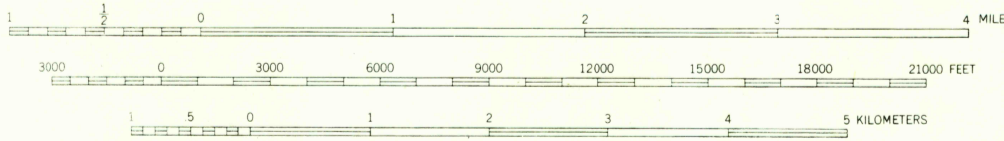
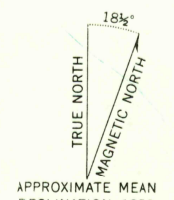
KOTZEBUE C-61



U.S.G.S.
FILE COPY
TOPOGRAPHIC DIVISION

SHISHMAREF A-21

Mapped by the Army Map Service
Published for civil use by the Geological Survey
Control by USGS, USC&GS and USCE
Topography from aerial photographs by multiplex methods
Aerial photographs taken 1949-1950. Map not field checked
Universal Transverse Mercator projection
1927 North American datum
1000-meter Universal Transverse Mercator grid ticks
zone 3, shown in blue
Unchecked elevations are shown in brown and blue



CONTOUR INTERVAL 50 FEET
DASHED LINES REPRESENT 25 FOOT CONTOURS
DATUM IS MEAN SEA LEVEL
SHORELINE SHOWN REPRESENTS THE APPROXIMATE LINE OF MEAN HIGH WATER
THE AVERAGE RANGE OF TIDE IS APPROXIMATELY 1 FOOT



U.S.G.S.
FILE COPY
TOPOGRAPHIC DIVISION

ROAD CLASSIFICATION
No roads or trails in this area

USGS
Historical File
Topographic Division

SHISHMAREF (B-1) ALASKA
N6615-W16500/15X30
1950

FOR SALE BY U.S. GEOLOGICAL SURVEY
FAIRBANKS, ALASKA DENVER 2, COLORADO WASHINGTON 25, D.C.
A FOLDER DESCRIBING TOPOGRAPHIC MAPS AND SYMBOLS IS AVAILABLE ON REQUEST

NOV - 5 1957

1855