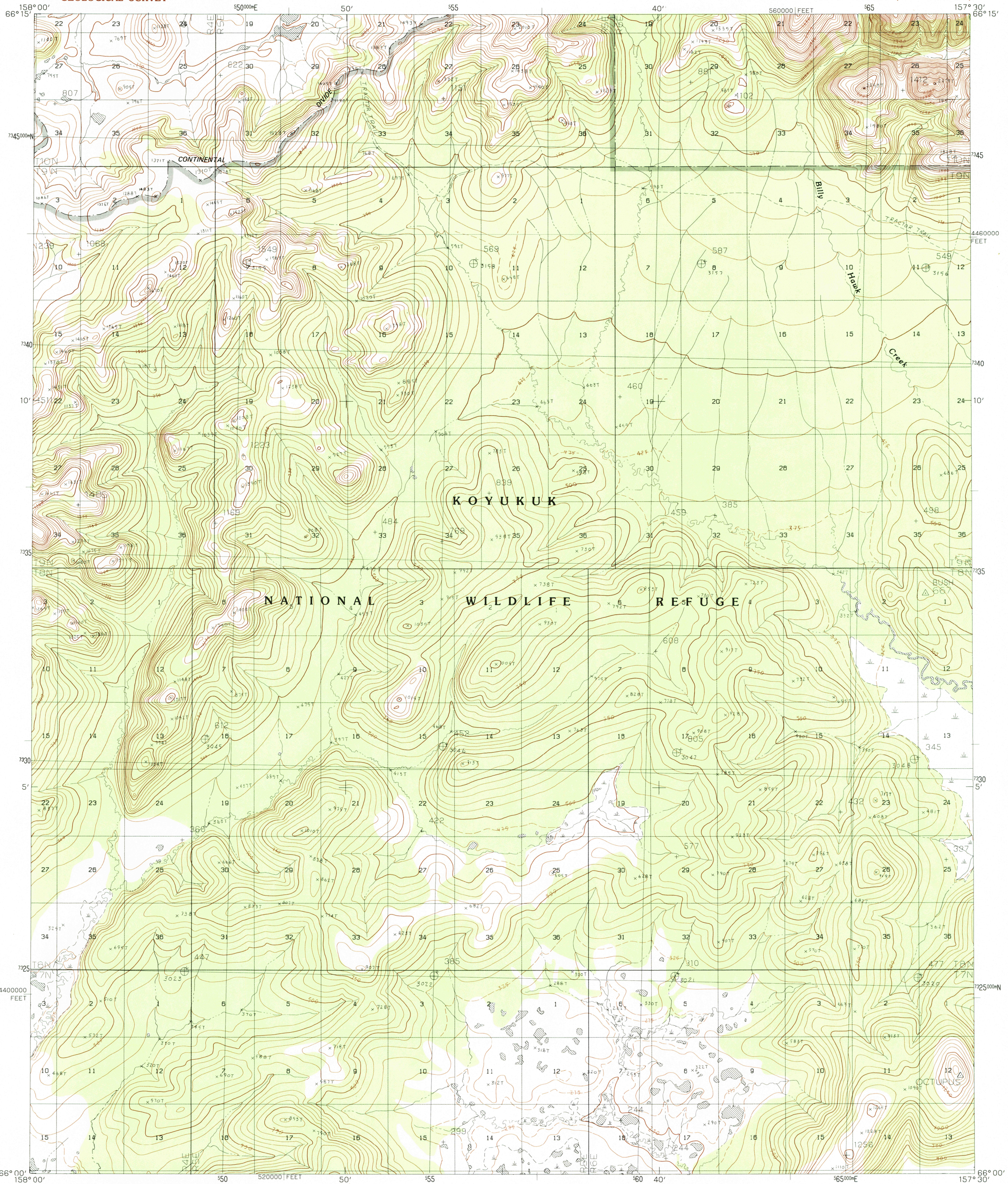


UNITED STATES
DEPARTMENT OF THE INTERIOR
GEOLOGICAL SURVEY

SHUNGNAK (A-4) QUADRANGLE
ALASKA
1:63 360 SERIES (TOPOGRAPHIC)



PRODUCED BY THE UNITED STATES GEOLOGICAL SURVEY
CONTROL BY USGS, NOS/NOAA
COMPILED FROM AERIAL PHOTOGRAPHS TAKEN 1971
MAP NOT FIELD CHECKED MAP EDITED 1985
PROJECTION UNIVERSAL TRANSVERSE MERCATOR
GRID: 5000-METER UNIVERSAL TRANSVERSE MERCATOR ZONE 4
20,000-FOOT STATE GRID TICKS ALASKA, ZONE 6
UTM GRID DECLINATION 1°09' EAST
1985 MAGNETIC NORTH DECLINATION 22' EAST
VERTICAL DATUM NATIONAL GEODETIC VERTICAL DATUM OF 1929
HORIZONTAL DATUM 1927 NORTH AMERICAN DATUM
To place on the predicted North American Datum of 1983, move the
projection lines 68 meters north and 124 meters east
Land lines represent unsurveyed and unmarked locations predeter-
mined by the Bureau of Land Management, Folio K-8, Kated River
Meridian
There may be private inholdings within the boundaries of any Federal
and State reservations shown on this map
Federal reservation boundaries established by the Alaska National
Interest Lands Conservation Act, PL 96-487, Dec. 2, 1980, are
shown as compiled by the administering agencies
All streams and lakes are perennial
Swamps, as portrayed, indicate only the wetter areas, usually of low
relief, as interpreted from aerial photographs

PROVISIONAL MAP
Produced from original
manuscript drawings. In-
formation shown as of date
of photography 3

SCALE 1:63 360
3000 0 3000 6000 9000 12000 15000 18000 21000 FEET
0 1 2 3 4 5 KILOMETERS

CONTOUR INTERVAL 50 FEET
SUPPLEMENTAL CONTOUR INTERVAL 25 FEET



QUADRANGLE LOCATION

ROAD LEGEND
Trail

1	2	3	1 Shungnak (B-5)
4	5	6	2 Shungnak (B-4)
7	8	9	3 Shungnak (B-3)
			4 Shungnak (A-5)
			5 Shungnak (A-3)
			6 Kated River (D-5)
			7 Kated River (D-4)
			8 Kated River (D-3)

SHUNGNAK (A-4), ALASKA
PROVISIONAL EDITION 1985
N6600-W15730/15X30

FOR SALE BY U.S. GEOLOGICAL SURVEY, FAIRBANKS, ALASKA 99701
DENVER, COLORADO 80225, OR RESTON, VIRGINIA 22092