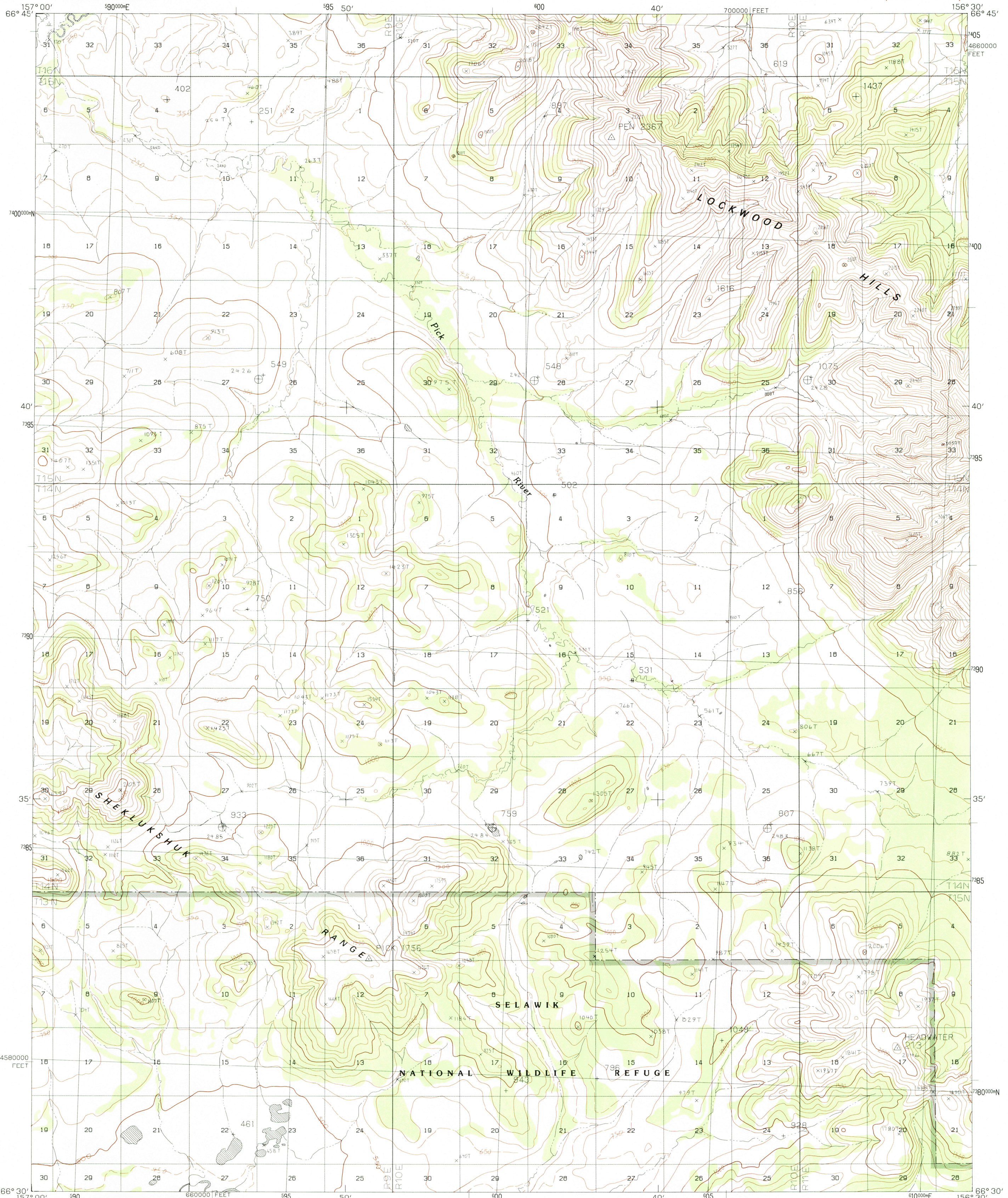


UNITED STATES
DEPARTMENT OF THE INTERIOR
GEOLOGICAL SURVEY

SHUNGNAK (C-2) QUADRANGLE
ALASKA
1:63 360 SERIES (TOPOGRAPHIC)



PRODUCED BY THE UNITED STATES GEOLOGICAL SURVEY CONTROL BY USGS, NOS/NOAA COMPILED FROM AERIAL PHOTOGRAPHS TAKEN 1971 MAP NOT FIELD CHECKED. MAP EDITED 1985 PROJECTION UNIVERSAL TRANSVERSE MERCATOR GRID: 5000-METER UNIVERSAL TRANSVERSE MERCATOR ZONE 4 20,000-FOOT STATE GRID TICKS ALASKA, ZONE 6 UTM GRID DECLINATION 2° 04' EAST 1985 MAGNETIC NORTH DECLINATION 23' EAST VERTICAL DATUM NATIONAL GEODETIC VERTICAL DATUM OF 1929 HORIZONTAL DATUM 1927 NORTH AMERICAN DATUM

To place on the predicted North American Datum of 1983, move the projection lines 65 meters north and 124 meters east. Land lines represent unsurveyed and unmarked locations determined by the Bureau of Land Management, Folio K-8, Kateel River Meridian.

There may be private inholdings within the boundaries of any Federal and State reservations shown on this map. Federal reservation boundaries established by the Alaska National Interest Lands Conservation Act, PL 96-487, Dec. 2, 1980, are shown as compiled by the administering agencies. All streams and lakes are perennial. Swamps, as portrayed, indicate only the wetter areas, usually of low relief, as interpreted from aerial photographs.

PROVISIONAL MAP
Produced from original manuscript drawings. Information shown as of date of photography.

To convert meters to feet multiply by 3.2808
To convert feet to meters multiply by .3048

1	2	3	1 Shungnak (D-3)
			2 Shungnak (D-2)
			3 Shungnak (D-1)
			4 Shungnak (C-3)
			5 Shungnak (C-1)
			6 Shungnak (B-3)
			7 Shungnak (B-2)
			8 Shungnak (B-1)

FOR SALE BY U.S. GEOLOGICAL SURVEY, FAIRBANKS, ALASKA 99701
DENVER, COLORADO 80295, OR RESTON, VIRGINIA 22092

SHUNGNAK (C-2), ALASKA
PROVISIONAL EDITION 1985