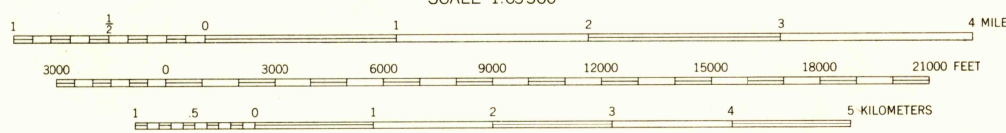
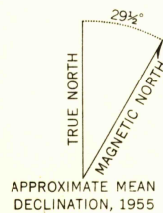


U.S.G.S.
FILE COPY
TOPOGRAPHIC DIVISION



Mapped, edited, and published by the Geological Survey
Control by USGS and USC&GS
Hydrography compiled from USC&GS charts 8239 and 8283
Topography from aerial photographs by multiplex methods 1955
Aerial photographs taken 1948. Map not field checked
Universal Transverse Mercator projection, zone 8
1927 North American datum
Entire land area is within the Tongass National Forest
Unchecked elevations are shown in brown and blue



CONTOUR INTERVAL 100 FEET
DATUM IS MEAN SEA LEVEL
DEPTH CURVES IN FEET DATUM IS MEAN LOWER LOW WATER
SHORELINE SHOWN REPRESENTS THE APPROXIMATE LINE OF MEAN HIGH WATER
THE AVERAGE RANGE OF TIDE IS APPROXIMATELY 12 FEET

FOR SALE BY U.S. GEOLOGICAL SURVEY
FAIRBANKS, ALASKA FEDERAL CENTER, DENVER, COLORADO WASHINGTON 25, D.C.
A FOLDER DESCRIBING TOPOGRAPHIC MAPS AND SYMBOLS IS AVAILABLE ON REQUEST



ROAD CLASSIFICATION
ALL WEATHER ROADS DRY WEATHER ROADS
Hard-surface.....None Improved dirt.....None
Other.....None Unimproved dirt.....None
Trails.....

USGS
Historical File
Topographic Division

SITKA (B-4), ALASKA
N5715-W13500/15X20
1951

U.S.G.S.
FILE COPY
TOPOGRAPHIC DIVISION

MAR 16 1956

2090