

(SITKA D-4)

UNITED STATES  
DEPARTMENT OF THE INTERIOR  
GEOLOGICAL SURVEY

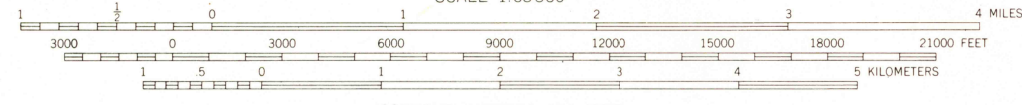
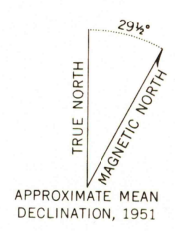
SITKA (C-3) QUADRANGLE  
ALASKA  
1:63 360 SERIES (TOPOGRAPHIC)

(SITKA D-2)



(SITKA B-4)

Mapped, edited, and published by the Geological Survey  
Control by USGS and USC&GS  
Topography by photogrammetric methods from aerial photographs  
taken 1948, field annotated 1951. Map not field checked  
Selected hydrographic data compiled from USC&GS Charts 8252  
(1:217 828 scale) and 8283. This information is not intended  
for navigational purposes  
Universal Transverse Mercator projection, 1927 North American datum  
10,000-foot grid based on Alaska coordinate system, zone 1  
1000-meter Universal Transverse Mercator grid ticks,  
zone 8, shown in blue  
Gray land lines represent unsurveyed and unmarked locations  
predetermined by the State of Alaska, Division of Lands,  
Copper River Meridian  
Entire land area is within the Tongass National Forest



SCALE 1:63 360  
CONTOUR INTERVAL 100 FEET  
DATUM IS MEAN SEA LEVEL  
DEPTH CURVES IN FEET—DATUM IS MEAN LOWER LOW WATER  
SHORELINE SHOWN REPRESENTS THE APPROXIMATE LINE OF MEAN HIGH WATER  
THE AVERAGE RANGE OF TIDE IS APPROXIMATELY 12 FEET



ROAD CLASSIFICATION

SITKA (C-3), ALASKA  
N5730—W13440/15X20  
1951  
MINOR REVISIONS 1973

FOR SALE BY U. S. GEOLOGICAL SURVEY  
FAIRBANKS, ALASKA 99701, DENVER, COLORADO 80225, OR WASHINGTON, D. C. 20242  
A FOLDER DESCRIBING TOPOGRAPHIC MAPS AND SYMBOLS IS AVAILABLE ON REQUEST

NOV 15 1983