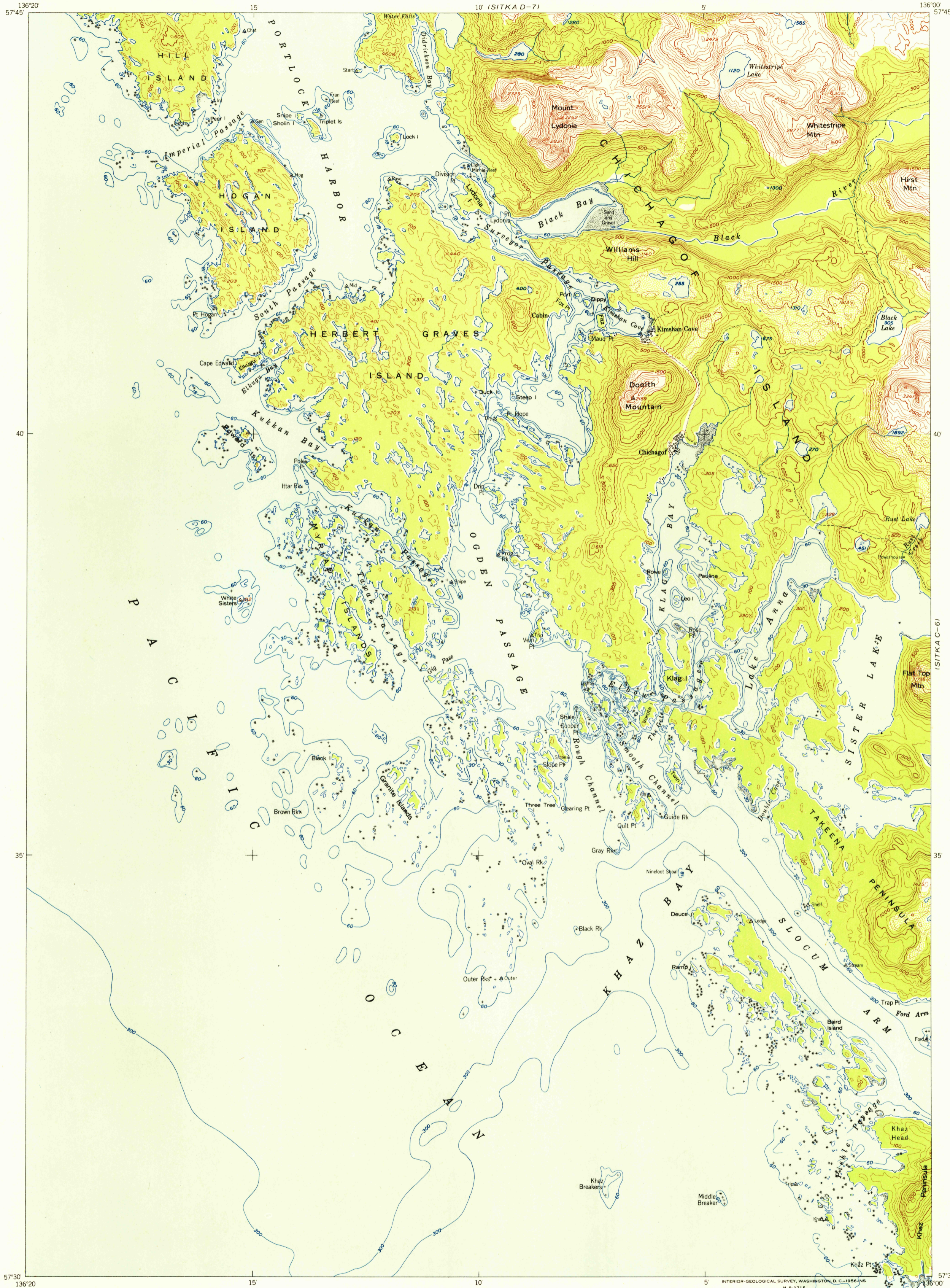
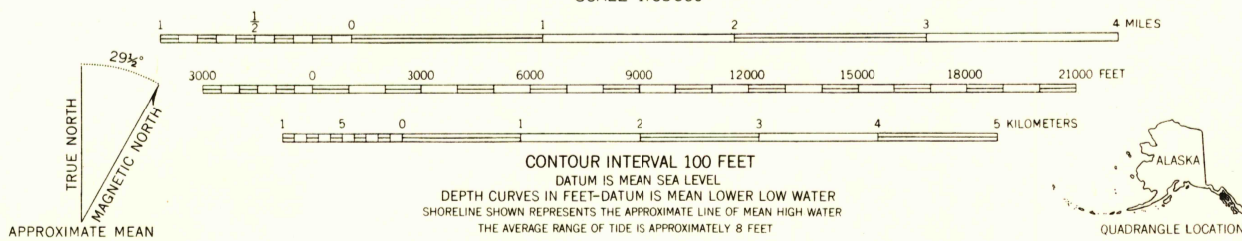


U.S.G.S.
FILE COPY
TOPOGRAPHIC DIVISION



Mapped, edited, and published by the Geological Survey
Control by USGS and USC&GS
Hydrography compiled from USC&GS charts 8252
(1:217,828 scale), 8258, and 8280
Topography from aerial photographs by multiplex methods 1955
Aerial photographs taken 1948. Map not field checked
Universal Transverse Mercator projection, zone 8
1927 North American datum
Entire land area is within the Tongass National Forest
Unchecked elevations are shown in brown and blue



ROAD CLASSIFICATION

ALL WEATHER ROADS	DRY WEATHER ROADS
Hard-surface.....None	Improved dirt.....None
Other.....None	Unimproved dirt.....None
Trails.....	

SITKA (C-7), ALASKA
N5730—W13600/15X20
1948

FOR SALE BY U.S. GEOLOGICAL SURVEY
FAIRBANKS, ALASKA FEDERAL CENTER, DENVER 2, COLORADO WASHINGTON 25, D.C.
A FOLDER DESCRIBING TOPOGRAPHIC MAPS AND SYMBOLS IS AVAILABLE ON REQUEST

U.S.G.S.
FILE COPY
TOPOGRAPHIC DIVISION
Historical File
Topographic Division