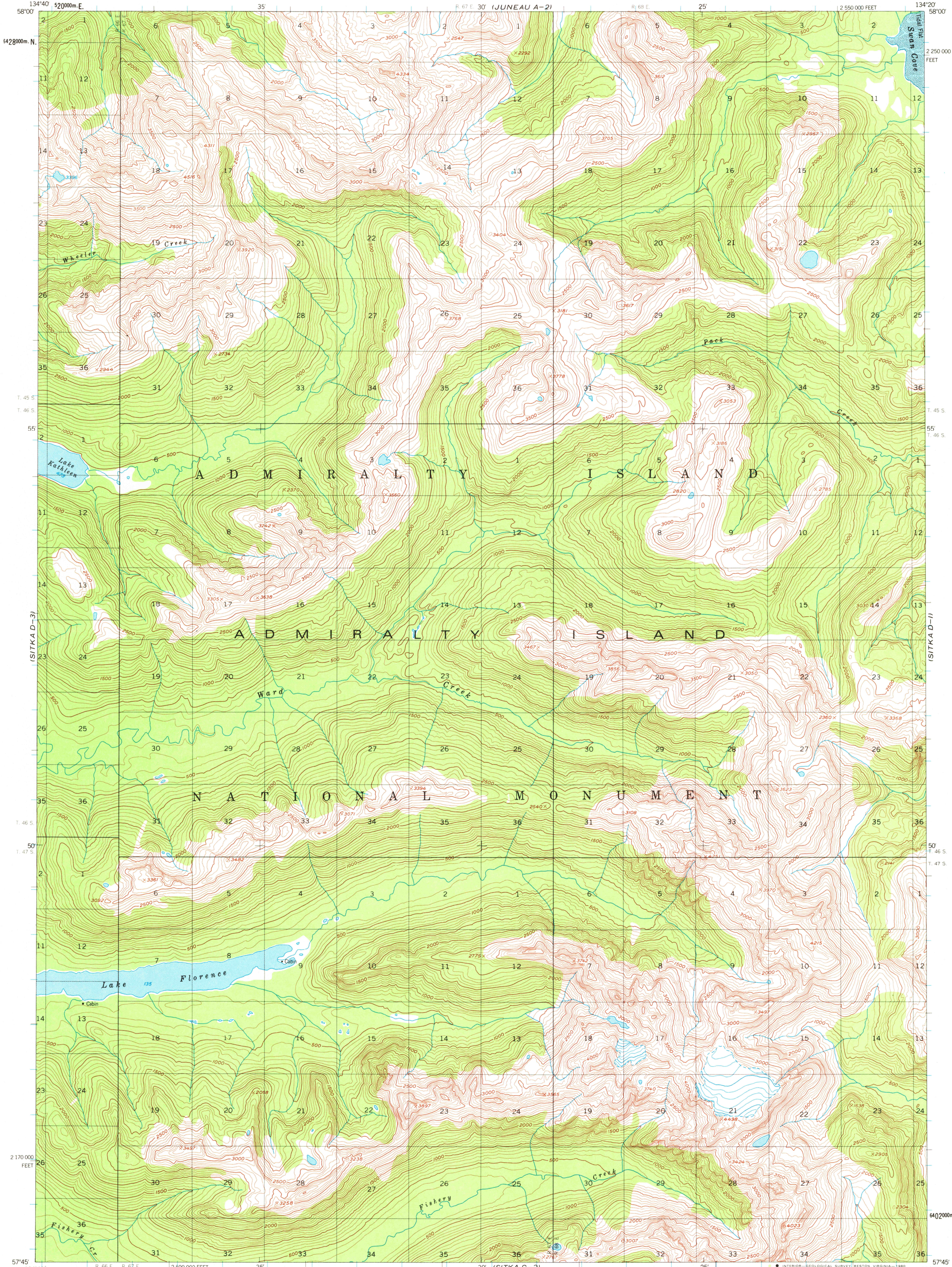


JUNEAU A-3

UNITED STATES  
DEPARTMENT OF THE INTERIOR  
GEOLOGICAL SURVEY

SITKA (D-2) QUADRANGLE  
ALASKA  
1:63 360 SERIES (TOPOGRAPHIC)

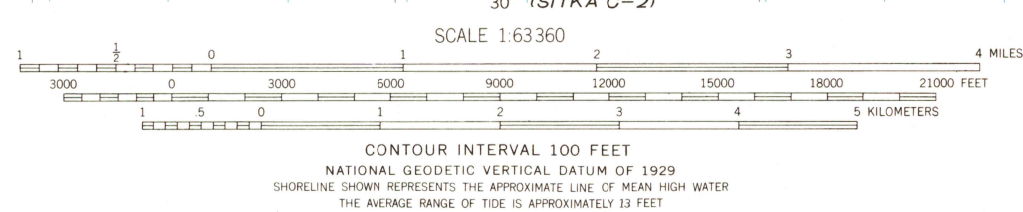
JUNEAU A-1



SITKA C-3

Mapped, edited, and published by the Geological Survey  
Control by USGS and USC&GS  
Topography by photogrammetric methods from aerial photographs  
taken 1948, field annotated 1951. Map not field checked  
Selected hydrographic data compiled from USC&GS Chart  
8202 (1:209,978 scale). This information is not intended  
for navigational purposes  
Universal Transverse Mercator projection, 1927 North American datum  
10,000-foot grid based on Alaska coordinate system, zone 1  
1000-meter Universal Transverse Mercator grid ticks,  
zone 8, shown in blue  
Land lines represent unsurveyed and unmarked locations  
from computations by the State of Alaska, Division of Lands  
Copper River Meridian Folio CR-13  
Entire land area is within the Tongass National Forest  
There may be private inholdings within the boundaries of  
the National or State reservations shown on this map

TRUE NORTH  
MAGNETIC NORTH  
APPROXIMATE MEAN  
DECLINATION, 1951



ROAD CLASSIFICATION  
No roads or trails in this area

SITKA (D-2), ALASKA  
N5745-W13420/15X20  
1951  
MINOR REVISIONS 1979

FOR SALE BY U.S. GEOLOGICAL SURVEY  
FAIRBANKS, ALASKA 99701, DENVER, COLORADO 80225, OR RESTON, VIRGINIA 22092  
A FOLDER DESCRIBING TOPOGRAPHIC MAPS AND SYMBOLS IS AVAILABLE ON REQUEST

USGS  
Historical File  
Topographic Division

FEB 3 1981  
1300