

JUNEAU A-1

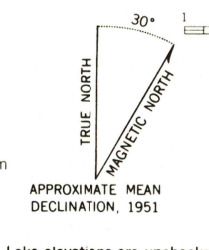
UNITED STATES  
DEPARTMENT OF THE INTERIOR  
GEOLOGICAL SURVEY

SITKA (D-3) QUADRANGLE  
ALASKA  
1:63,360 SERIES (TOPOGRAPHIC)

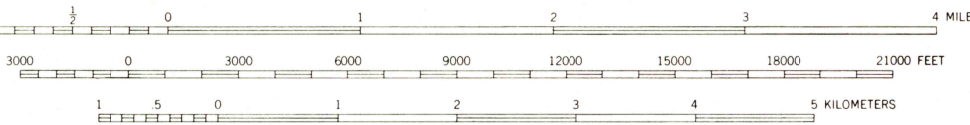
JUNEAU A-2



Mapped, edited, and published by the Geological Survey  
Control by USGS and USC&GS  
Topography by photogrammetric methods from aerial photographs  
taken 1948, field annotated 1951. Map not field checked  
Selected hydrographic data compiled from USC&GS Chart  
8202 (1:203,180 scale) 1942. This information is not intended  
for navigational purposes  
Universal Transverse Mercator projection, 1927 North American datum  
10,000 foot grid based on Alaska coordinate system, zone 1  
1000 meter Universal Transverse Mercator grid ticks,  
zone 8, shown in blue  
Gray land lines represent unsurveyed and unmarked locations  
predetermined by the State of Alaska, Division of Lands  
Folio CR-13, and from computations for the Copper River Meridian  
Entire land area is within the Tongass National Forest  
There may be private inholdings within the boundaries of  
the National or State reservations shown on this map



Lake elevations are unchecked



CONTOUR INTERVAL 100 FEET  
NATIONAL GEODETTIC VERTICAL DATUM OF 1929  
DEPTH CURVES AND SOUNDINGS IN FEET—DATUM IS MEAN LOWER LOW WATER  
SHORELINE SHOWN REPRESENTS THE APPROXIMATE LINE OF MEAN HIGH WATER  
THE AVERAGE RANGE OF TIDE IS APPROXIMATELY 8 FEET

FOR SALE BY U. S. GEOLOGICAL SURVEY  
FAIRBANKS, ALASKA 99701, DENVER, COLORADO 80225, OR RESTON, VIRGINIA 22092  
A FOLDER DESCRIBING TOPOGRAPHIC MAPS AND SYMBOLS IS AVAILABLE ON REQUEST



To place on the predicted North American Datum 1983 move  
the projection lines 38 meters north and 106 meters east  
Swamps, as portrayed, indicate only the wetter areas,  
usually of low relief, as interpreted from aerial photographs

ROAD CLASSIFICATION  
Trails

SITKA (D-3), ALASKA  
N5745—W13440/15X20  
1951  
LIMITED REVISIONS 1975

USGS  
Historical File  
National Mapping Div.

APR 3 1981  
2500