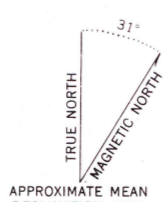
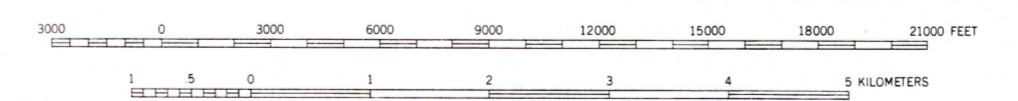


Mapped, edited, and published by the Geological Survey  
Control by USGS, USC&GS, and IBC  
Hydrography compiled from USC&GS chart 8303  
Topography from aerial photographs by multiplex methods  
Aerial photographs taken August 1948  
Universal Transverse Mercator projection, zone 8  
1927 North American datum  
Dashed land lines indicate approximate location  
Unchecked elevations shown in brown and blue



(JUNEAU D-4)  
SCALE 1:63360



CONTOUR INTERVAL 100 FEET  
DATUM IS MEAN SEA LEVEL  
DEPTH CURVES IN FEET—DATUM IS MEAN LOWER LOW WATER  
SHORELINE SHOWN REPRESENTS THE APPROXIMATE LINE OF MEAN HIGH WATER  
THE AVERAGE RANGE OF TIDE IS APPROXIMATELY 14 FEET

ROAD CLASSIFICATION

ALL WEATHER ROADS	DRY WEATHER ROADS
Hard-surface .....	None Improved dirt .....
Other .....	None Unimproved dirt .....
Trails .....	None

SKAGWAY (A-1), ALASKA  
N5900-W13500/15X22.5

1951

FOR SALE BY U. S. GEOLOGICAL SURVEY, FEDERAL CENTER, DENVER, COLORADO OR WASHINGTON 25, D. C.  
A FOLDER DESCRIBING TOPOGRAPHIC MAPS AND SYMBOLS IS AVAILABLE ON REQUEST