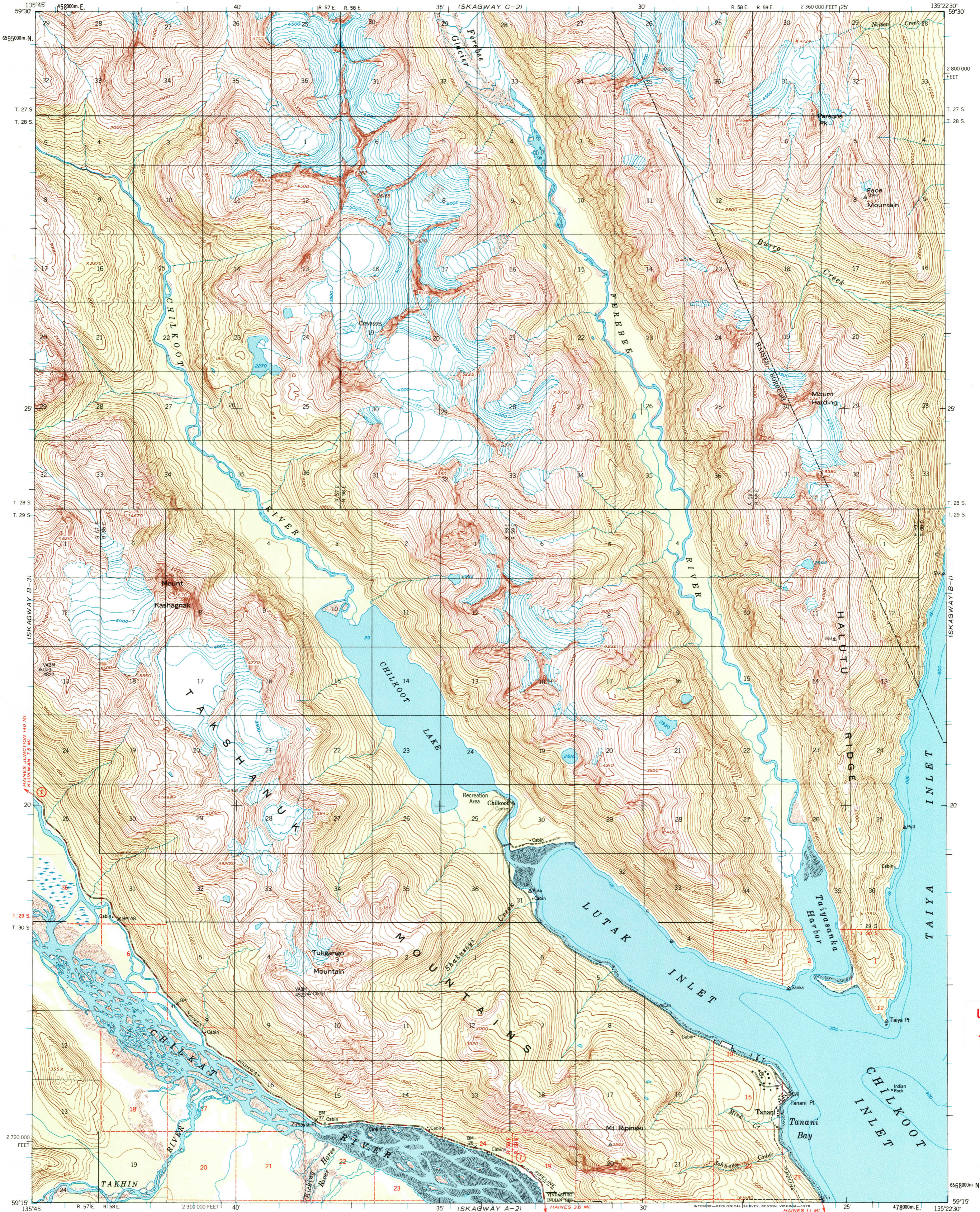


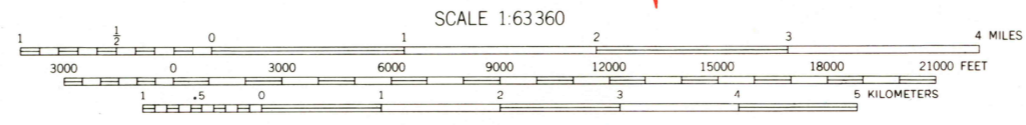
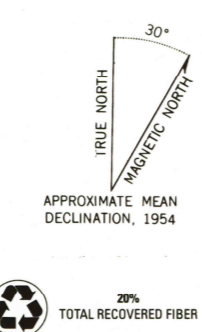


U.S. DEPARTMENT OF THE INTERIOR  
U.S. GEOLOGICAL SURVEY

SKAGWAY (B-2), QUADRANGLE  
ALASKA  
1:63 360 SERIES (TOPOGRAPHIC)



Mapped, edited, and published by the Geological Survey  
Control by USGS, USC&GS and Geodetic Survey of Canada  
Topography by photogrammetric methods from aerial photographs  
taken 1948, field annotated 1954. Map not field checked  
Selected hydrographic data compiled from USC&GS  
Chart 8303 (1958). This information is not intended  
for navigational purposes.  
Universal Transverse Mercator projection, 1927 North American datum  
10,000 foot grid based on Alaska coordinate system, zone 1  
1000-meter Universal Transverse Mercator grid ticks,  
zone 8, shown in blue  
Gray land lines represent unsurveyed and unmarked locations  
predetermined by the State of Alaska, Division of Lands  
Folio CR-11, Copper River Meridian  
Swamps, as portrayed, indicate only the wetter areas,  
usually of low relief, as interpreted from aerial photographs



CONTOUR INTERVAL 100 FEET  
NATIONAL GEODETIC VERTICAL DATUM OF 1929  
DEPTH CURVES IN FEET-DATUM IS MEAN LOWER LOW WATER  
SHORELINE SHOWN REPRESENTS THE APPROXIMATE LINE OF MEAN HIGH WATER  
THE MEAN RANGE OF TIDE IS APPROXIMATELY 14 FEET

FOR SALE BY U.S. GEOLOGICAL SURVEY  
FAIRBANKS, ALASKA 99701, DENVER, COLORADO 80225, OR RESTON, VIRGINIA 22092  
A FOLDER DESCRIBING TOPOGRAPHIC MAPS AND SYMBOLS IS AVAILABLE ON REQUEST



ROAD CLASSIFICATION

Medium-duty	Light-duty
Unimproved dirt	State Route

JUN 18 2006

SKAGWAY (B-2), ALASKA  
N5915-W13522.5/15X22.5  
1954  
LIMITED REVISIONS 1977

USGS Library  
Reston, VA.  
Topo Archive

