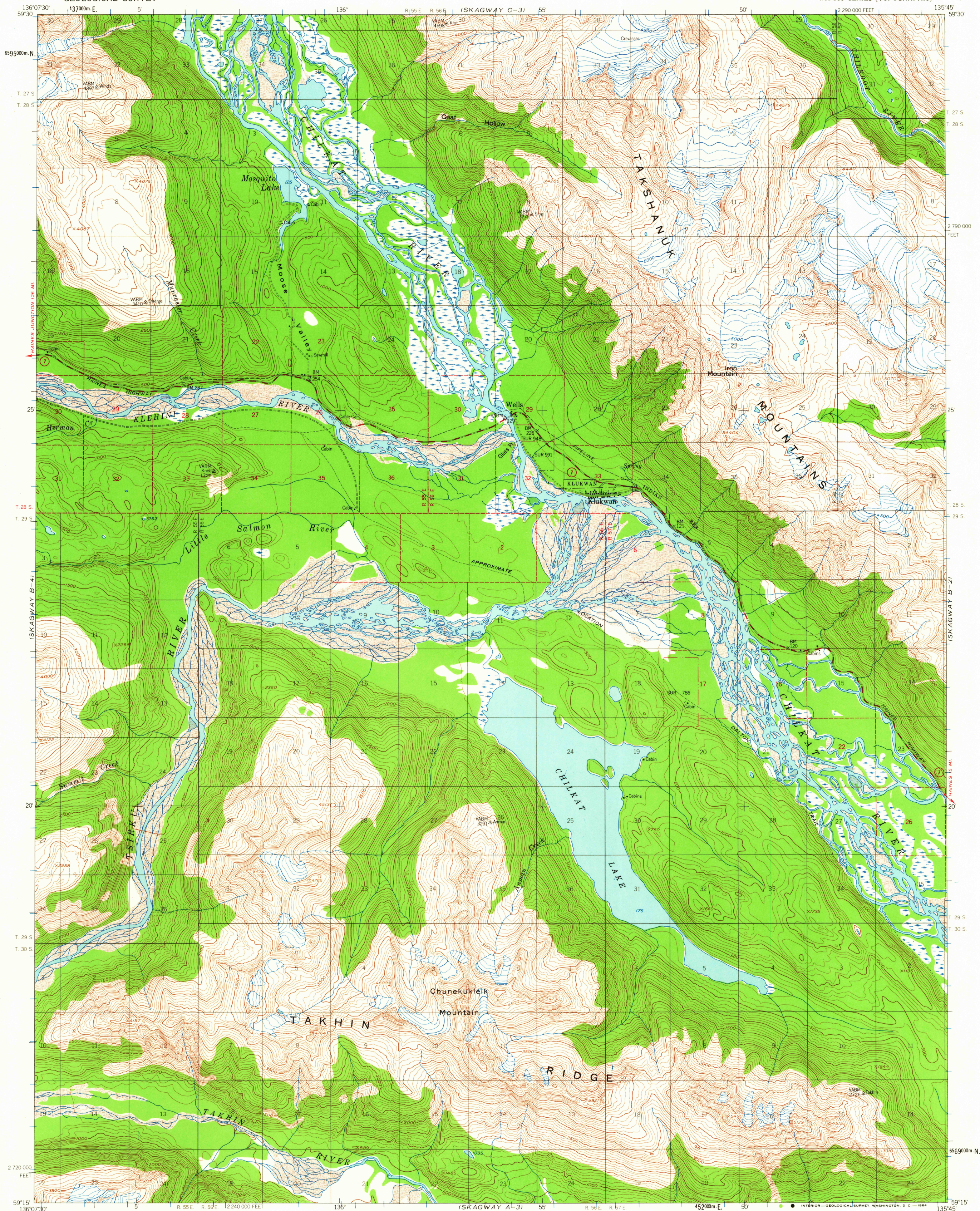
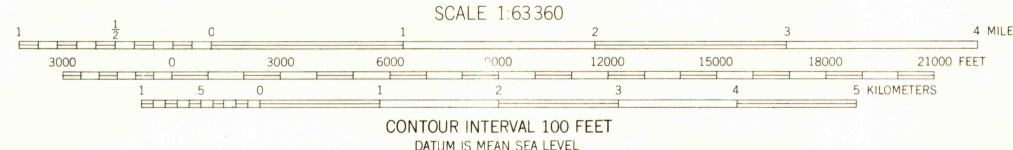
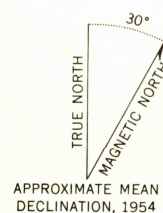


UNITED STATES
DEPARTMENT OF THE INTERIOR
GEOLOGICAL SURVEY

SKAGWAY (B-3) QUADRANGLE
ALASKA
1:63 360 SERIES (TOPOGRAPHIC)



Mapped, edited, and published by the Geological Survey
Control by USGS, USC&GS, and Geodetic Survey of Canada
Topography by photogrammetric methods from aerial photographs
taken 1948, field annotated 1954. Map not field checked
Universal Transverse Mercator projection, 1927 North American datum
10,000-foot grid based on Alaska coordinate system, zone 1
1000-meter Universal Transverse Mercator grid ticks,
zone 8, shown in blue
Land lines printed in gray represent unsurveyed and unmarked
locations predetermined by the State of Alaska, Division of Lands
Copper River Meridian
Swamps, as portrayed, indicate only the wetter areas,
usually of low relief, as interpreted from aerial photographs



ROAD CLASSIFICATION
Medium-duty ——— Light-duty ———
Unimproved dirt ———
State Route ———
USGS
Historical File
Topographic Division



FOR SALE BY U.S. GEOLOGICAL SURVEY
FAIRBANKS, ALASKA DENVER 25, COLORADO WASHINGTON 25, D.C.
A FOLDER DESCRIBING TOPOGRAPHIC MAPS AND SYMBOLS IS AVAILABLE ON REQUEST

SKAGWAY (B-3), ALASKA
N5915-W13545/15X22.5
1954
MINOR REVISIONS 1963

JUN 22 1964