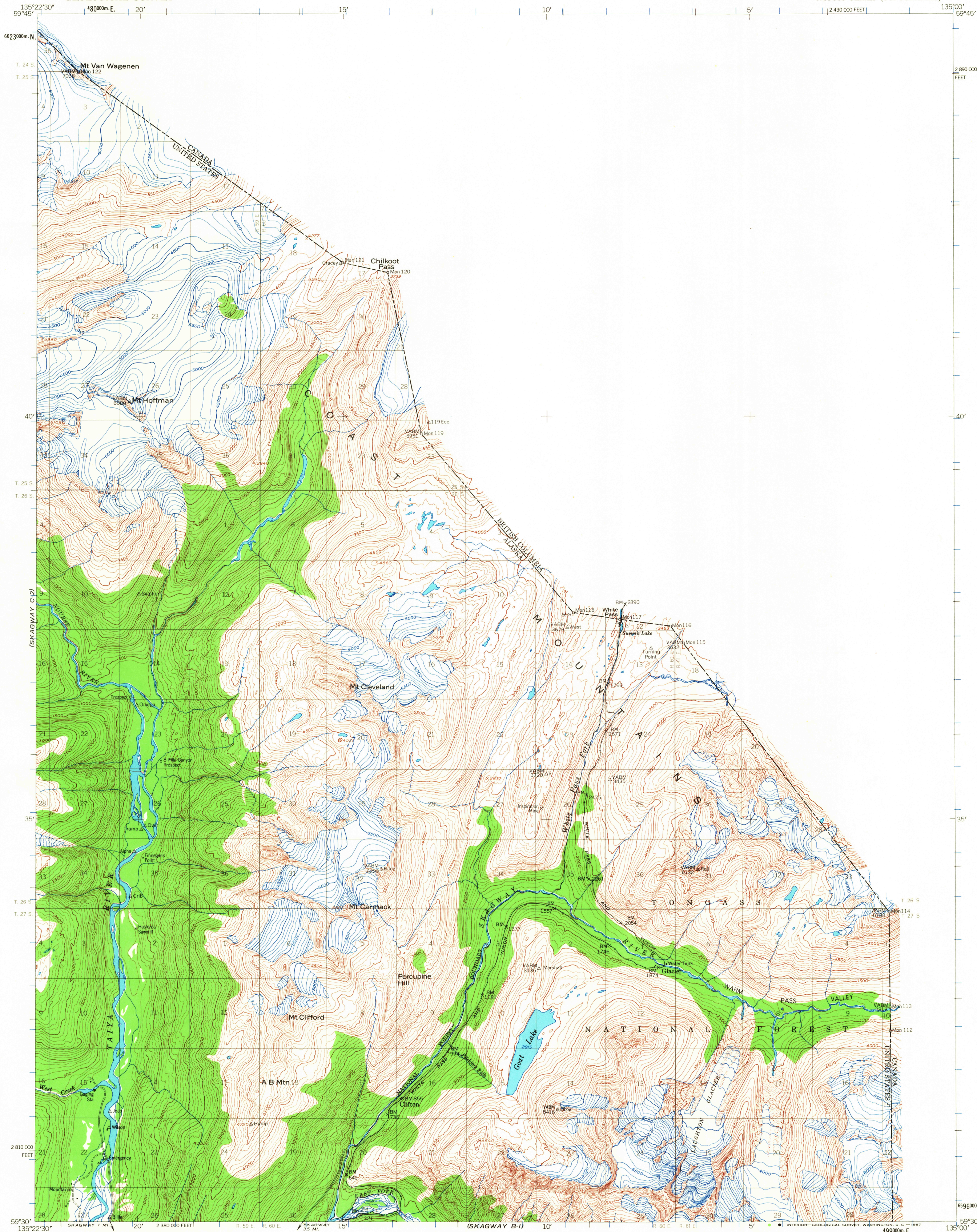
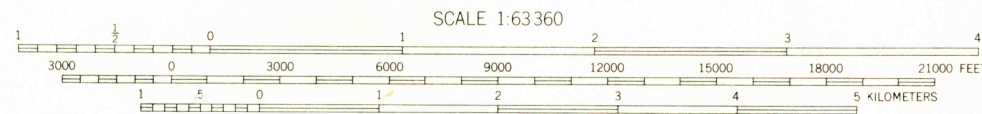
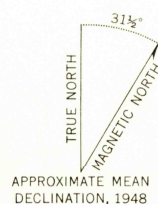


UNITED STATES
DEPARTMENT OF THE INTERIOR
GEOLOGICAL SURVEY

SKAGWAY (C-1) QUADRANGLE
ALASKA
1:63 360 SERIES (TOPOGRAPHIC)



Mapped, edited, and published by the Geological Survey
Control by USC&GS and IBC
Topography by photogrammetric methods from aerial photographs
taken 1948. Map not field checked
Universal Transverse Mercator projection, 1927 North American datum
10,000-foot grid based on Alaska coordinate system, zone 1
1000-meter Universal Transverse Mercator grid ticks,
zone 8, shown in blue
Land lines represent unsurveyed and unmarked locations
predetermined by the Bureau of Land Management
Folio CR-11, Copper River Meridian



ROAD CLASSIFICATION
Light-duty ————— Unimproved dirt —————



SKAGWAY (C-1), ALASKA
N5930-W13500/15X22.5

1948
MINOR REVISIONS 1966

FOR SALE BY U. S. GEOLOGICAL SURVEY
FAIRBANKS, ALASKA 99701, DENVER, COLORADO 80225, OR WASHINGTON, D. C. 20242
A FOLDER DESCRIBING TOPOGRAPHIC MAPS AND SYMBOLS IS AVAILABLE ON REQUEST

FILE COPY
TOPOGRAPHIC DIVISION

USGS
Historical File
Topographic Division

1715
1948