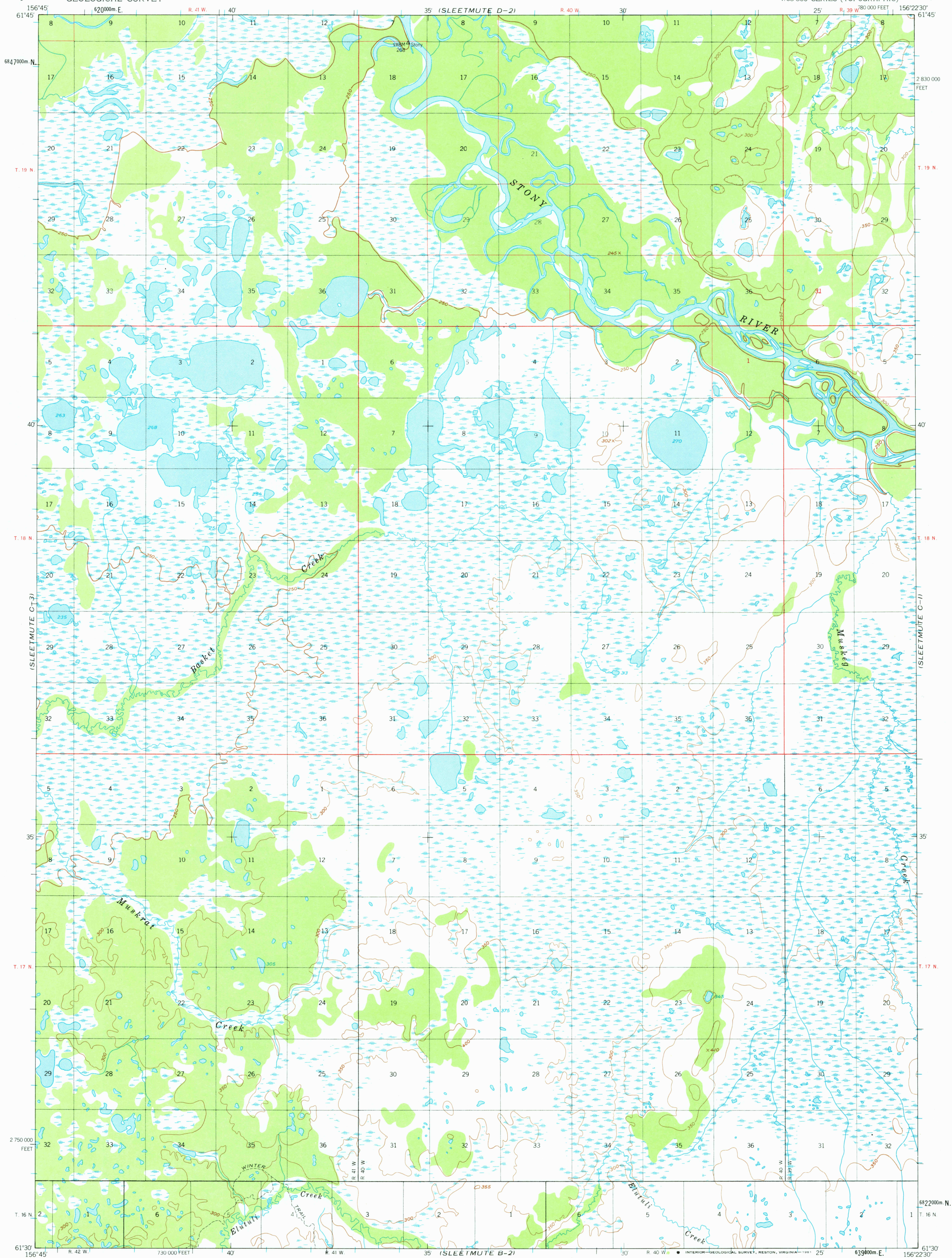


UNITED STATES  
DEPARTMENT OF THE INTERIOR  
GEOLOGICAL SURVEY

SLEETMUTE (C-2) QUADRANGLE  
ALASKA  
1:63 360 SERIES (TOPOGRAPHIC)



Mapped, edited, and published by the Geological Survey

Control by USC&GS and USCE

Topography by photogrammetric methods from aerial photographs

taken 1953, field annotated 1954. Map not field checked

Universal Transverse Mercator projection, 1927 North American datum

10,000-foot grid ticks based on Alaska coordinate system, zone 6

1000-meter Universal Transverse Mercator grid ticks, zone 4, shown in blue

Gray land lines represent unsurveyed and unmarked locations

predetermined by the Bureau of Land Management

Folios S-4 and S-11, Seward Meridian

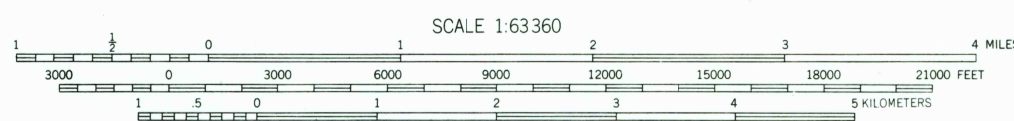
Swamps, as portrayed, indicate only the wetter areas,

usually of low relief, as interpreted from aerial photographs

To place on the predicted North American Datum 1983 move

the projection lines 78 meters north and 126 meters east

Lake elevations are unchecked



CONTOUR INTERVAL 50 FEET  
NATIONAL GEODETIC VERTICAL DATUM OF 1929

FOR SALE BY U.S. GEOLOGICAL SURVEY  
FAIRBANKS, ALASKA 99701, DENVER, COLORADO 80225, OR RESTON, VIRGINIA 22092  
A FOLDER DESCRIBING TOPOGRAPHIC MAPS AND SYMBOLS IS AVAILABLE ON REQUEST

ROAD CLASSIFICATION  
Trails

SLEETMUTE (C-2), ALASKA  
N6130-W15622.5/15X22.5  
1954  
MINOR REVISIONS 1981

RETURN TO:  
USGS NHD HISTORICAL MAP ARCHIVES

1600