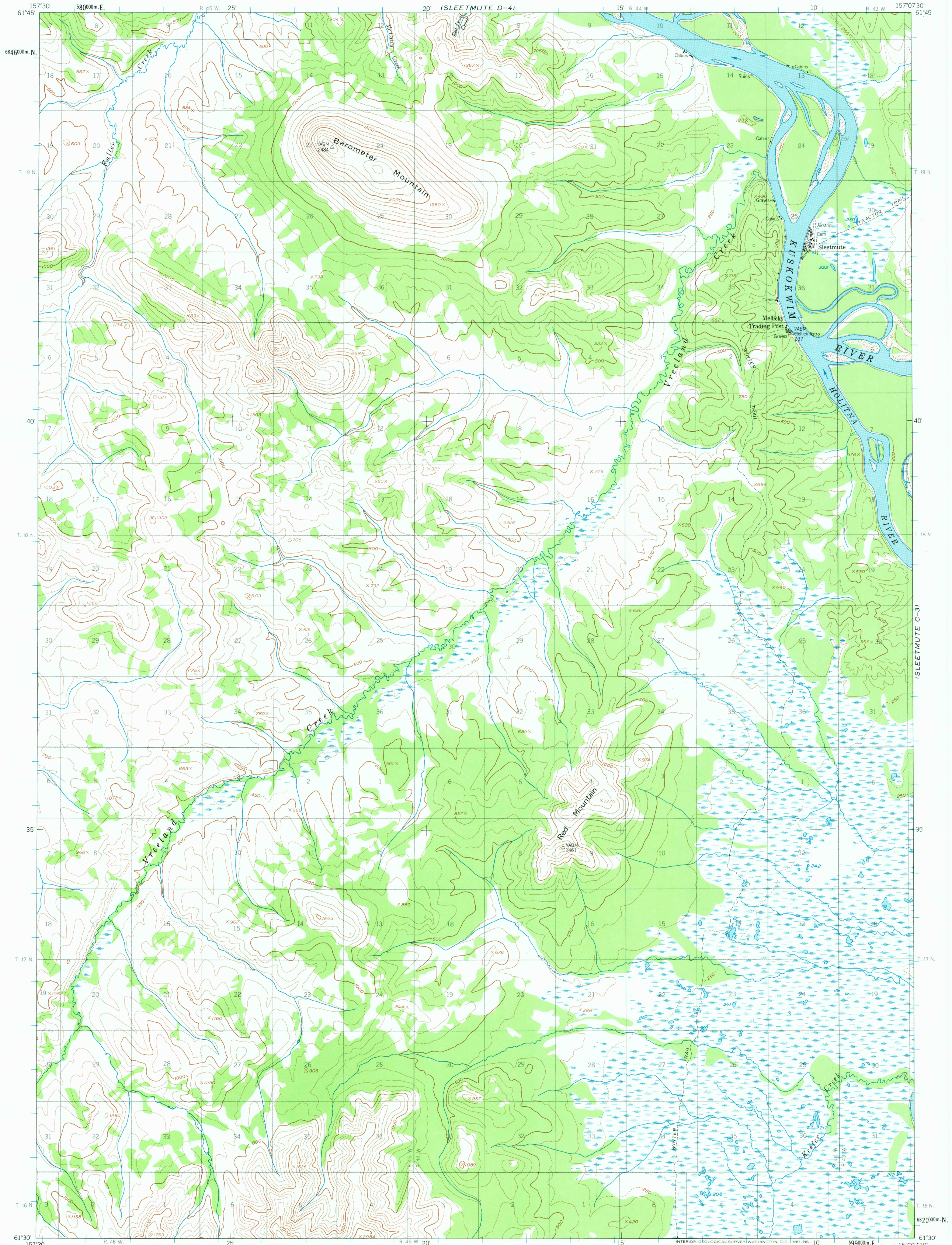


(SLEETMUTE D-5)

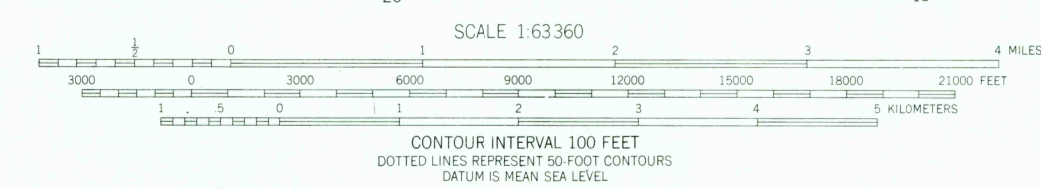
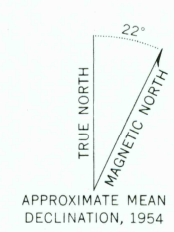
UNITED STATES
DEPARTMENT OF THE INTERIOR
GEOLOGICAL SURVEY

SLEETMUTE (C-4) QUADRANGLE
ALASKA
1:63 360 SERIES (TOPOGRAPHIC)

(SLEETMUTE D-3)



Mapped, edited, and published by the Geological Survey
Control by USC&GS and USCE
Topography from aerial photographs by photogrammetric
methods 1957. Aerial photographs taken 1953,
field annotated 1954. Map not field checked.
Universal Transverse Mercator projection
1927 North American datum
1000 meter Universal Transverse Mercator grid ticks,
zone 4, shown in blue
Land lines represent unsurveyed and unmarked locations
predetermined by the Bureau of Land Management
Folios S-4 and S-11, Seward Meridian
Swamps as portrayed, indicate only the wetter areas,
usually of low relief, as interpreted from aerial photographs



ROAD CLASSIFICATION
Light duty

FOR SALE BY U.S. GEOLOGICAL SURVEY
FAIRBANKS, ALASKA DENVER 25, COLORADO WASHINGTON 25, D.C.
A FOLDER DESCRIBING TOPOGRAPHIC MAPS AND SYMBOLS IS AVAILABLE ON REQUEST

SLEETMUTE (C-4), ALASKA
N6130-W15705/15X22.5
1954

NOV 30 1954