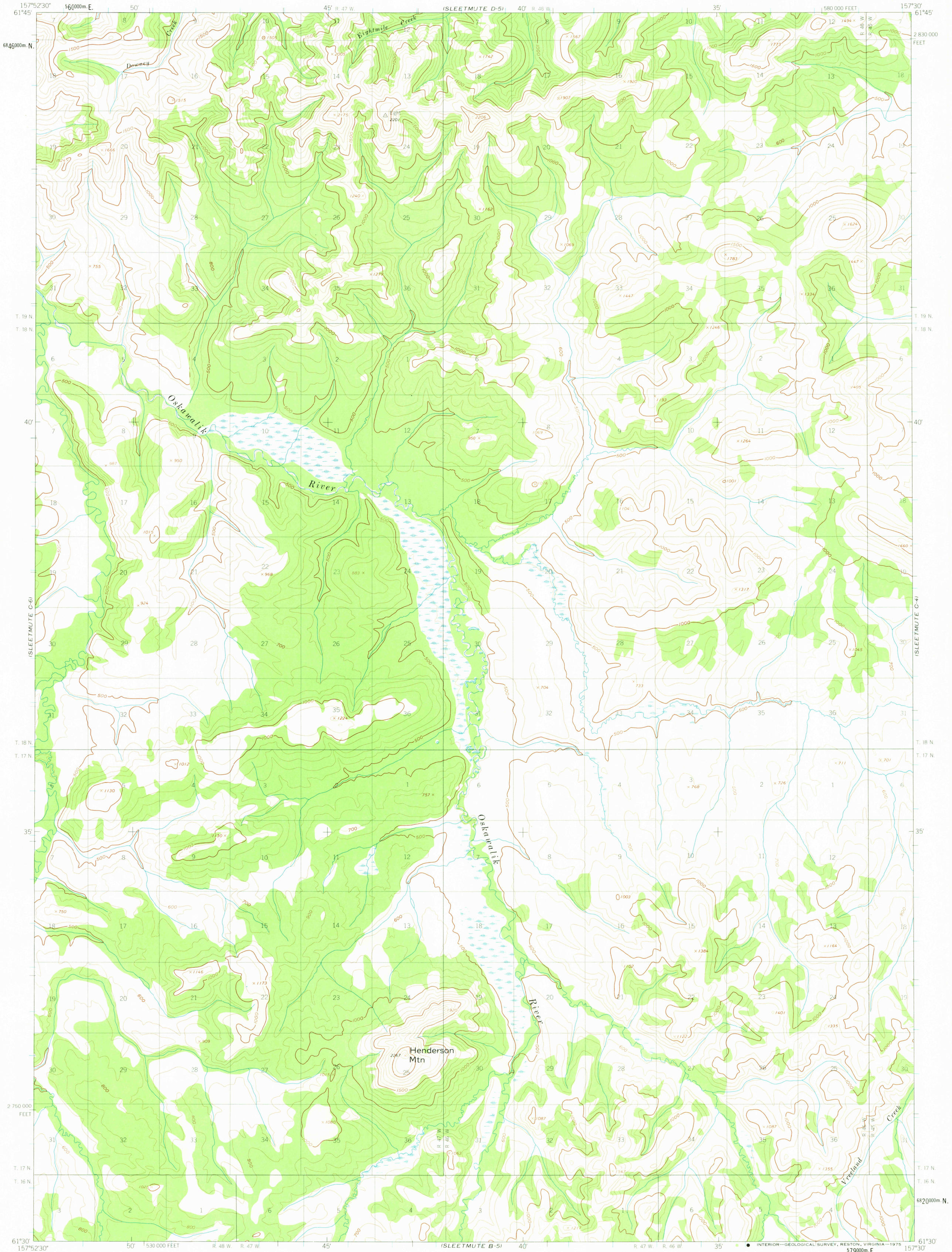


UNITED STATES
DEPARTMENT OF THE INTERIOR
GEOLOGICAL SURVEY

SLEETMUTE (C-5) QUADRANGLE
ALASKA
1:63 360 SERIES (TOPOGRAPHIC)



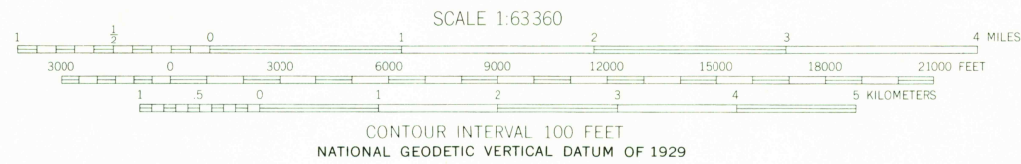
Mapped, edited, and published by the Geological Survey
Control by USGS and US&GS

Topography by photogrammetric methods from aerial photographs
taken 1953. Field annotated 1954. Map not field checked.

Universal Transverse Mercator projection. 1927 North American datum
10 000 foot grid based on Alaska coordinate system, zone 6
1000 meter Universal Transverse Mercator grid ticks,
zone 4, shown in blue

Land lines represent unsurveyed and unmarked locations
predetermined by the Bureau of Land Management
Folios S. 4 and S. 11, Seward Meridian

Swamps, as portrayed, indicate only the wetter areas,
usually of low relief, as interpreted from aerial photographs.



FOR SALE BY U. S. GEOLOGICAL SURVEY
FAIRBANKS, ALASKA 99701, DENVER, COLORADO 80225, OR RESTON, VIRGINIA 22092
A FOLDER DESCRIBING TOPOGRAPHIC MAPS AND SYMBOLS IS AVAILABLE ON REQUEST



SLEETMUTE (C-5), ALASKA
N6130-W15730/15X22.5

1954

ROAD CLASSIFICATION
No roads or trails in this area

USGS
Historical File
Topographic Division

APR 2 1975

270