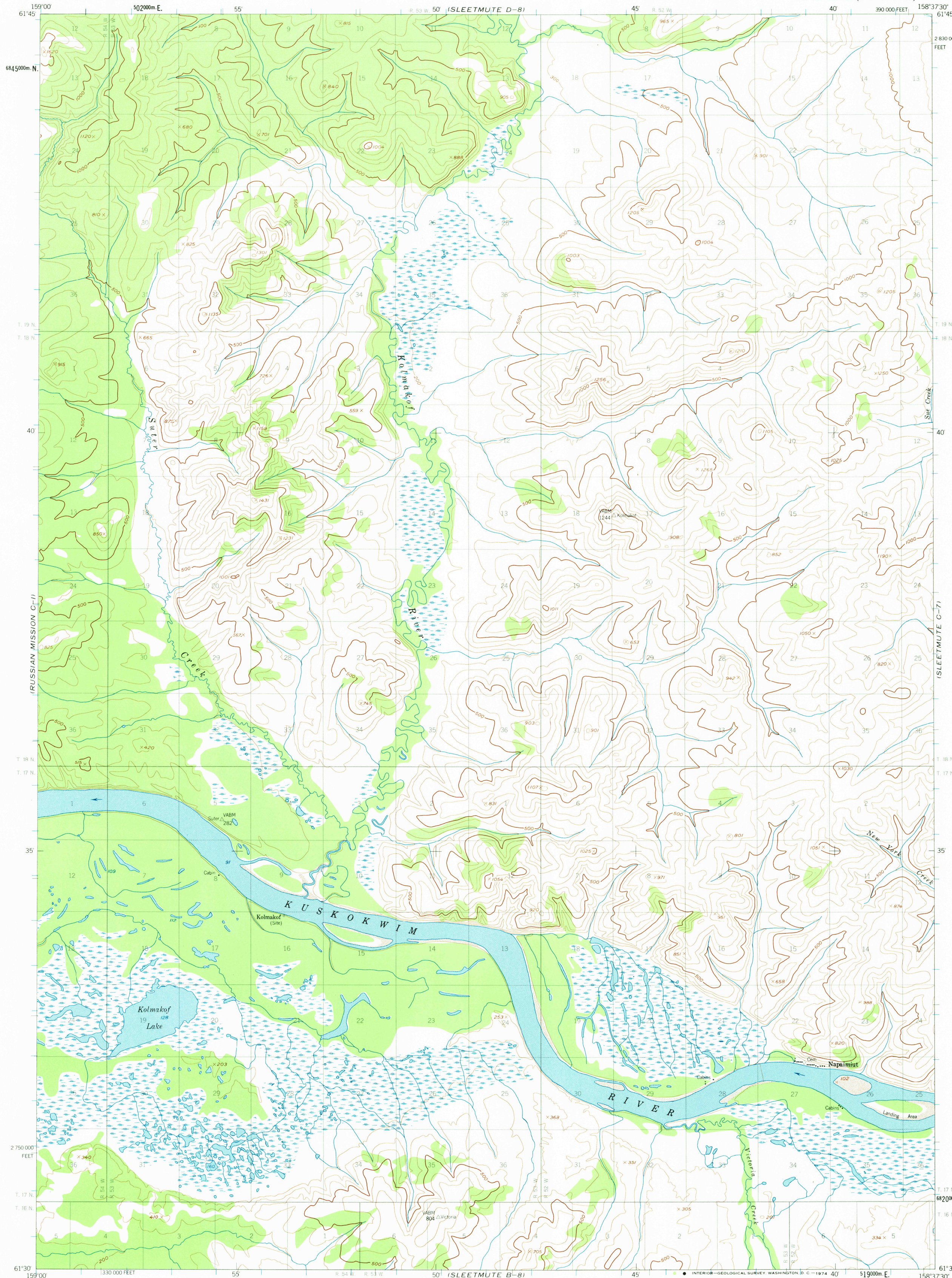


RUSSIAN MISSION D-11

UNITED STATES
DEPARTMENT OF THE INTERIOR
GEOLOGICAL SURVEY

SLEETMUTE (C-8) QUADRANGLE
ALASKA
1:63 360 SERIES (TOPOGRAPHIC)

SLEETMUTE D-71



Mapped, edited, and published by the Geological Survey
Control by USCGS and USCE
Topography by photogrammetric methods from aerial photographs
taken 1953, field annotated 1954. Map not field checked
Universal Transverse Mercator projection, 1927 North American datum
10000-foot grid based on Alaska coordinate system, zone 6
1000-meter Universal Transverse Mercator grid ticks,
zone 4, shown in blue
Land lines represent unsurveyed and unmarked locations
predetermined by the Bureau of Land Management
Folios S-5 and S-10, Seward Meridian
Swamps, as portrayed, indicate only the wetter areas,
usually of low relief, as interpreted from aerial photographs

21°
TRUE NORTH
MAGNETIC NORTH
APPROXIMATE MEAN
DECLINATION, 1954

SCALE 1:63 360
0 3000 6000 9000 12000 15000 18000 21000 FEET
0 1 2 3 4 5 KILOMETERS
CONTOUR INTERVAL 100 FEET
DATUM IS MEAN SEA LEVEL

ROAD CLASSIFICATION
No roads or trails in this area

AUG 5 1974

SLEETMUTE (C-8), ALASKA
N6130-W158375/15X22.5

1954
MINOR REVISIONS 1972



USGS
Historical File
Topographic Division

FOR SALE BY U. S. GEOLOGICAL SURVEY
FAIRBANKS, ALASKA 99701, DENVER, COLORADO 80225, OR WASHINGTON, D. C. 20422
A FOLDER DESCRIBING TOPOGRAPHIC MAPS AND SYMBOLS IS AVAILABLE ON REQUEST

2300