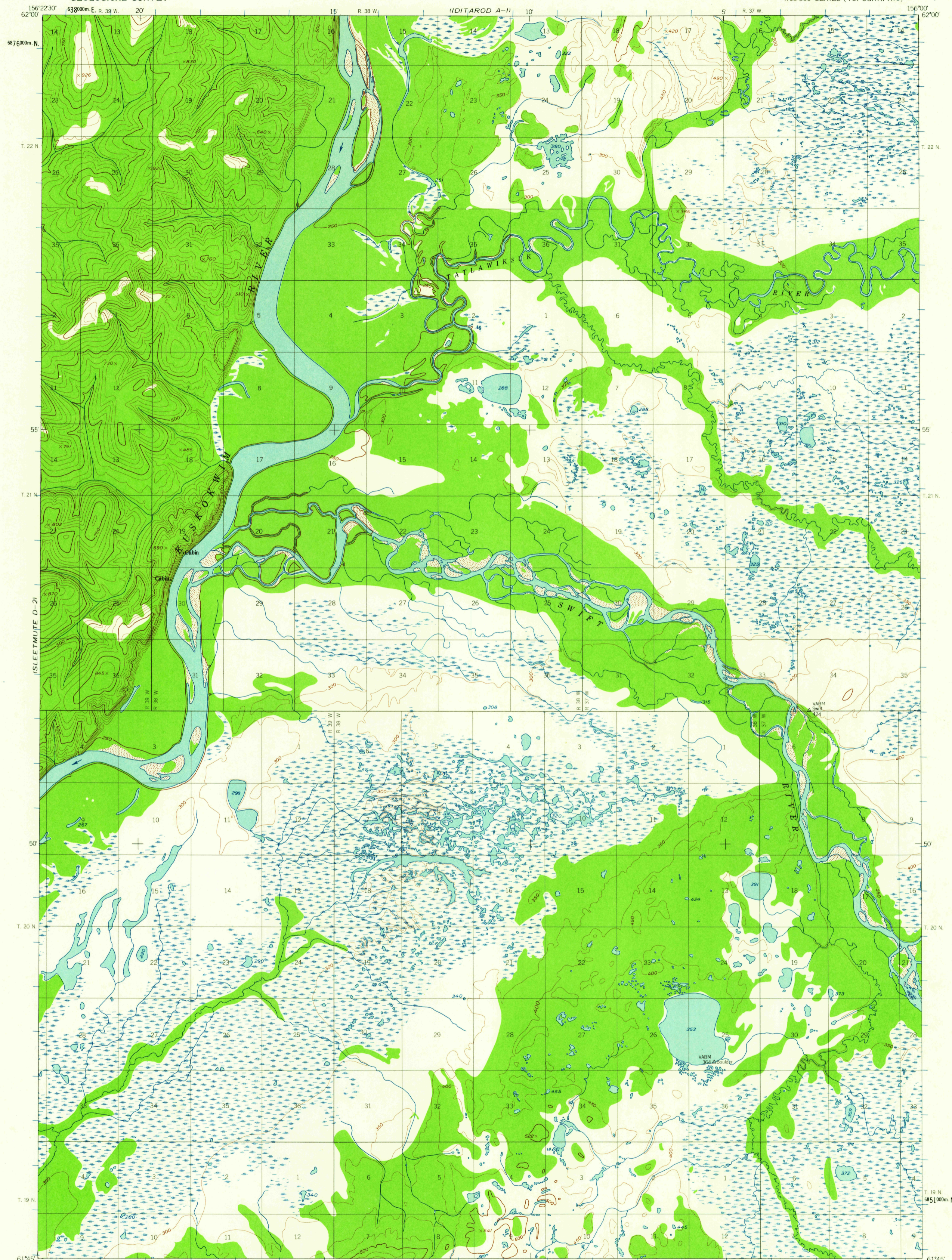
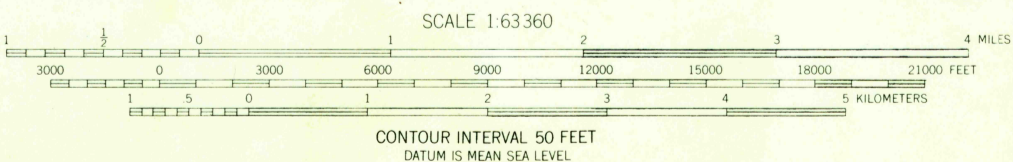
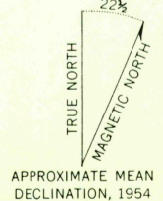


UNITED STATES
DEPARTMENT OF THE INTERIOR
GEOLOGICAL SURVEY

SLEETMUTE (D-I) QUADRANGLE
ALASKA
1:63 360 SERIES (TOPOGRAPHIC)

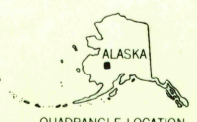


Mapped, edited, and published by the Geological Survey
Control by USCGS and USCE
Topography from aerial photographs by photogrammetric methods 1958. Aerial photographs taken 1953, field annotated 1954. Map not field checked
Universal Transverse Mercator projection
1927 North American datum
1000-meter Universal Transverse Mercator grid ticks, zone 4, shown in blue
Land lines represent unsurveyed and unmarked locations predetermined by the Bureau of Land Management Folio S-4, Seward Meridian
Swamps, as portrayed, indicate only the wetter areas, usually of low relief, as interpreted from aerial photographs



USGS
Historical File
Topographic Division

ROAD CLASSIFICATION
No roads or trails in this area



SLEETMUTE (D-I), ALASKA
N6145-W15600/15X22.5
1954

FOR SALE BY U.S. GEOLOGICAL SURVEY
FAIRBANKS, ALASKA DENVER 25, COLORADO WASHINGTON 25, D.C.
A FOLDER DESCRIBING TOPOGRAPHIC MAPS AND SYMBOLS IS AVAILABLE ON REQUEST

U.S.G.S.
FILE COPY
TOPOGRAPHIC DIVISION

MAR 20 1961

2610