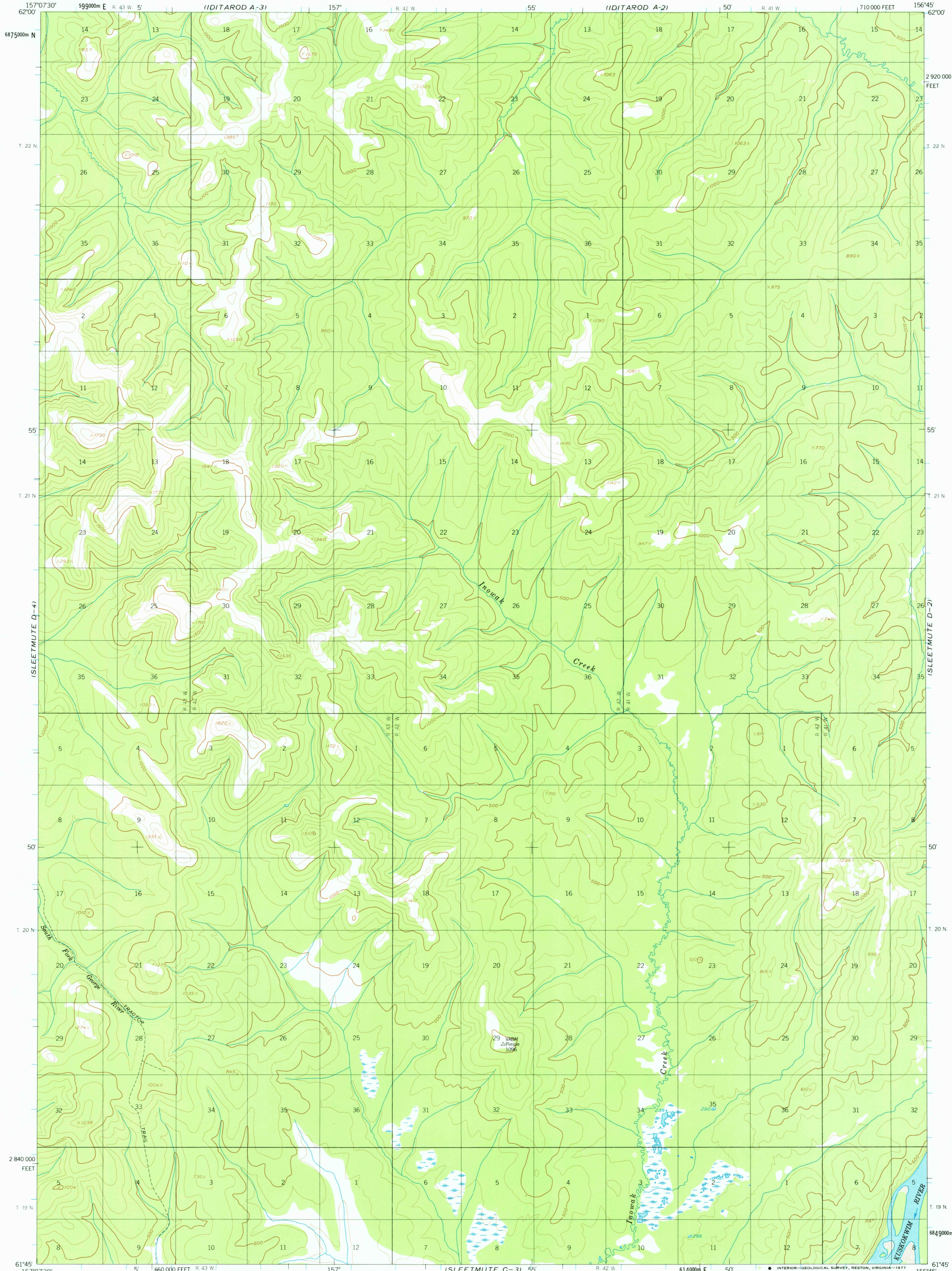


(IDITAROD A-3)

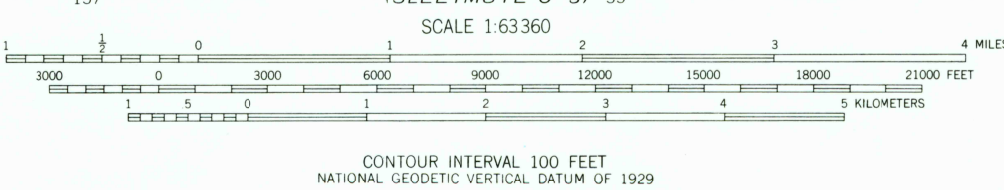
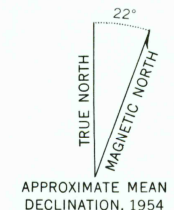
UNITED STATES  
DEPARTMENT OF THE INTERIOR  
GEOLOGICAL SURVEY

SLEETMUTE (D-3) QUADRANGLE  
ALASKA  
1:63 360 SERIES (TOPOGRAPHIC)

(IDITAROD A-2)



Mapped, edited, and published by the Geological Survey  
Control by US&GS and USCE  
Topography by photogrammetric methods from aerial photographs  
taken 1953, field annotated 1954.  
Map not field checked.  
Universal Transverse Mercator projection, 1927 North American datum  
10 000-foot grid ticks based on Alaska coordinate system, zone 6  
1 000-meter Universal Transverse Mercator grid ticks,  
zone 4, shown in blue  
Land lines represent unsurveyed and unmarked locations  
predetermined by the Bureau of Land Management  
Folio S-4, Seward Meridian  
Swamps, as portrayed, indicate only the wetter areas,  
usually of low relief, as interpreted from aerial photographs



ROAD CLASSIFICATION  
Trails

FOR SALE BY U. S. GEOLOGICAL SURVEY  
FAIRBANKS, ALASKA 99701, DENVER, COLORADO 80225, OR RESTON, VIRGINIA 22092  
A FOLDER DESCRIBING TOPOGRAPHIC MAPS AND SYMBOLS IS AVAILABLE ON REQUEST

SLEETMUTE (D-3), ALASKA  
N6145-W15645/15X22.5  
1954  
MINOR REVISIONS 1976

USGS  
Historical File  
Topographic Division

JUN 13 1977  
2,250

(SLEETMUTE C-4)

(SLEETMUTE C-2)