

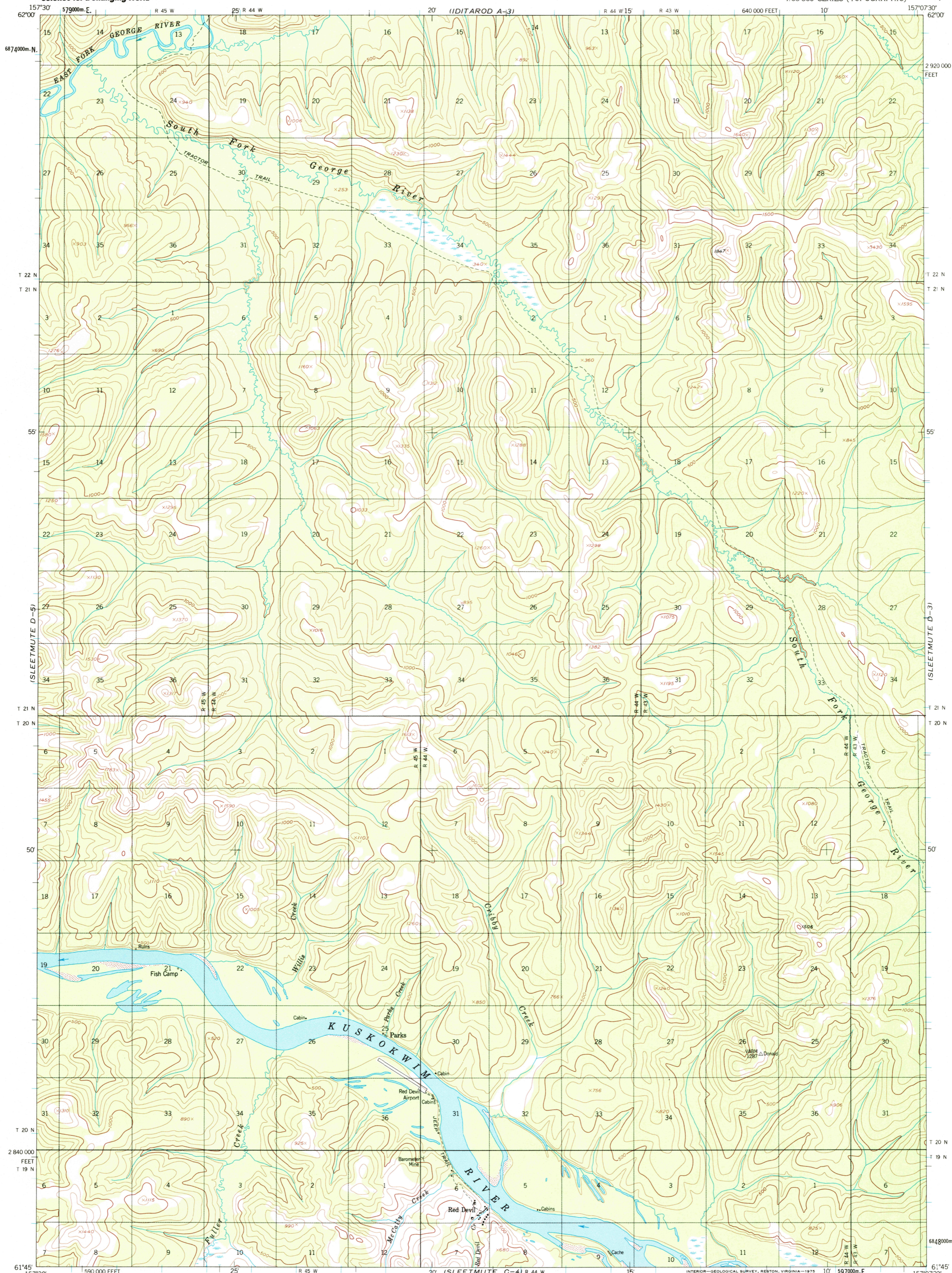
IDITAROD A-1



U.S. DEPARTMENT OF THE INTERIOR
U.S. GEOLOGICAL SURVEY

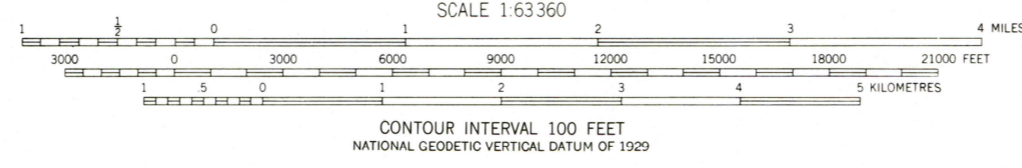
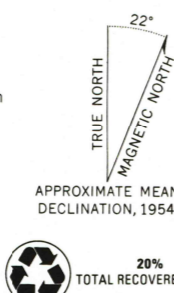
SLEETMUTE (D-4) QUADRANGLE
ALASKA
1:63 360 SERIES (TOPOGRAPHIC)

IDITAROD A-3



SLEETMUTE C-5

Mapped, edited, and published by the Geological Survey
Control by USGS, NOS/NOAA and USCE
Topography by photogrammetric methods from aerial photographs
taken 1953, field annotated 1954. Map not field checked
Universal Transverse Mercator projection, 1927 North American datum
10,000-foot grid based on Alaska coordinate system, zone 6
1000-metre Universal Transverse Mercator grid ticks,
zone 4, shown in blue
Land lines represent unsurveyed and unmarked locations
predetermined by the Bureau of Land Management
Folio S-4, Seward Meridian
Swamps, as portrayed, indicate only the wetter areas,
usually of low relief, as interpreted from aerial photographs



SLEETMUTE (D-4), ALASKA
N6145-W15707.5/15X22.5
1954
MINOR REVISIONS 1973

FOR SALE BY U.S. GEOLOGICAL SURVEY, P.O. BOX 25286, DENVER, COLORADO 80225
A FOLDER DESCRIBING TOPOGRAPHIC MAPS AND SYMBOLS IS AVAILABLE ON REQUEST

RECEIVED
OCT 31 2002
USGS/INWL
HISTORICAL MAP ARCHIVES



ISBN 0-607-03369-4