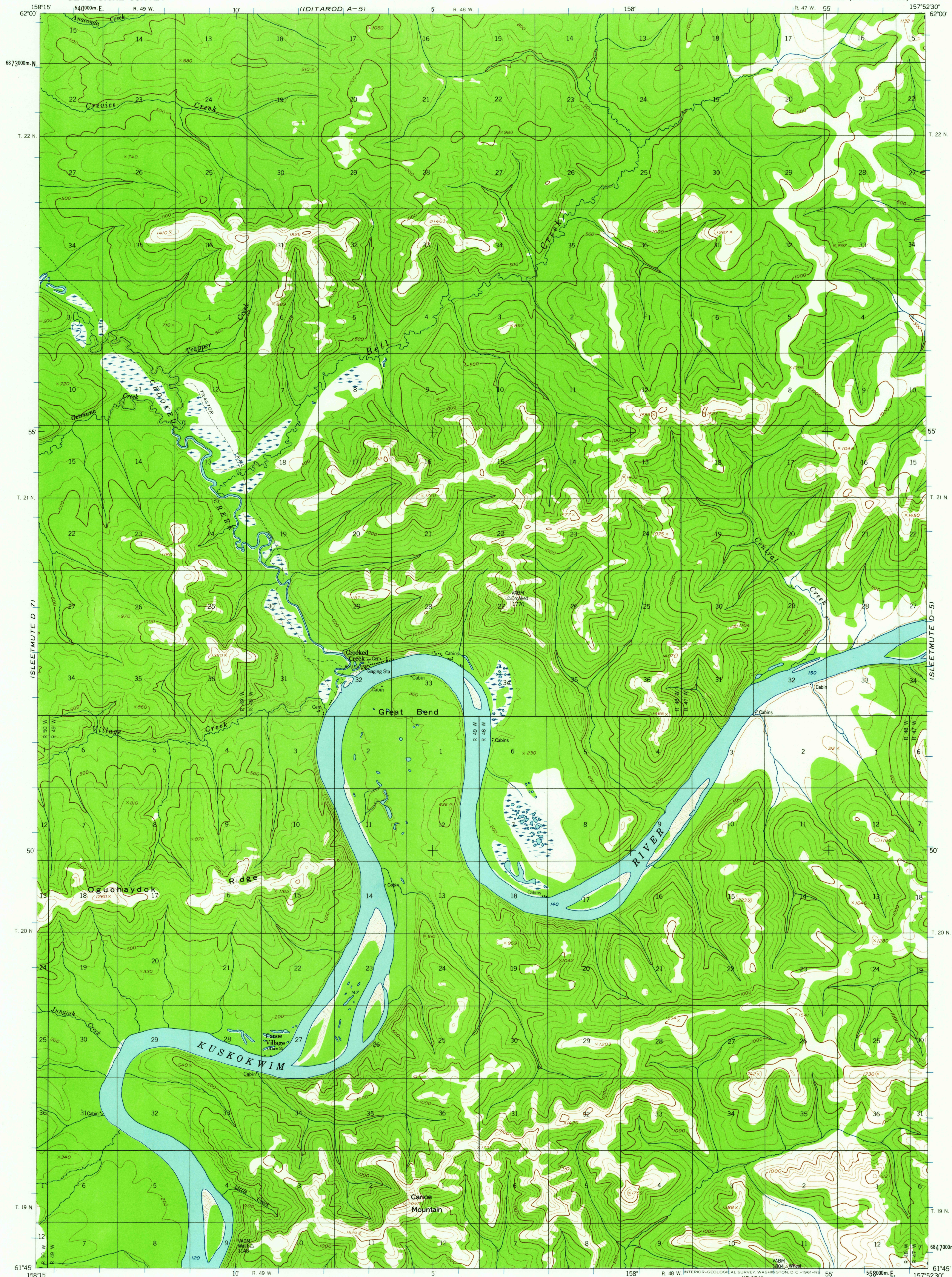
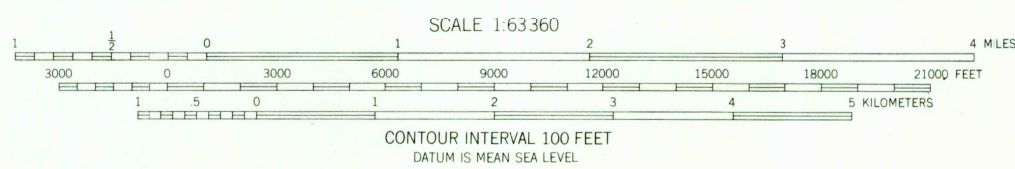
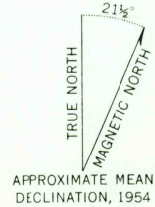


UNITED STATES
DEPARTMENT OF THE INTERIOR
GEOLOGICAL SURVEY

SLEETMUTE (D-6) QUADRANGLE
ALASKA
1:63 360 SERIES (TOPOGRAPHIC)



Mapped, edited, and published by the Geological Survey
Control by USGS and USCE
Topography from aerial photographs by photogrammetric
methods 1958. Aerial photographs taken 1953,
field annotated 1954. Map not field checked.
Universal Transverse Mercator projection
1927 North American datum
1000 meter Universal Transverse Mercator grid ticks,
zone 4, shown in blue
Land lines represent unsurveyed and unmarked locations
predetermined by the Bureau of Land Management
Folios S-4 and S-5, Seward Meridian
Swamps, as portrayed, indicate only the wetter areas,
usually of low relief, as interpreted from aerial photographs



USGS
Historical File
Topographic Division



ROAD CLASSIFICATION
Trails

SLEETMUTE (D-6), ALASKA
N6145-W15752.5/15X22.5
1954

USGS
FILE COPY
TOPOGRAPHIC DIVISION

JUN 27 1961

2490