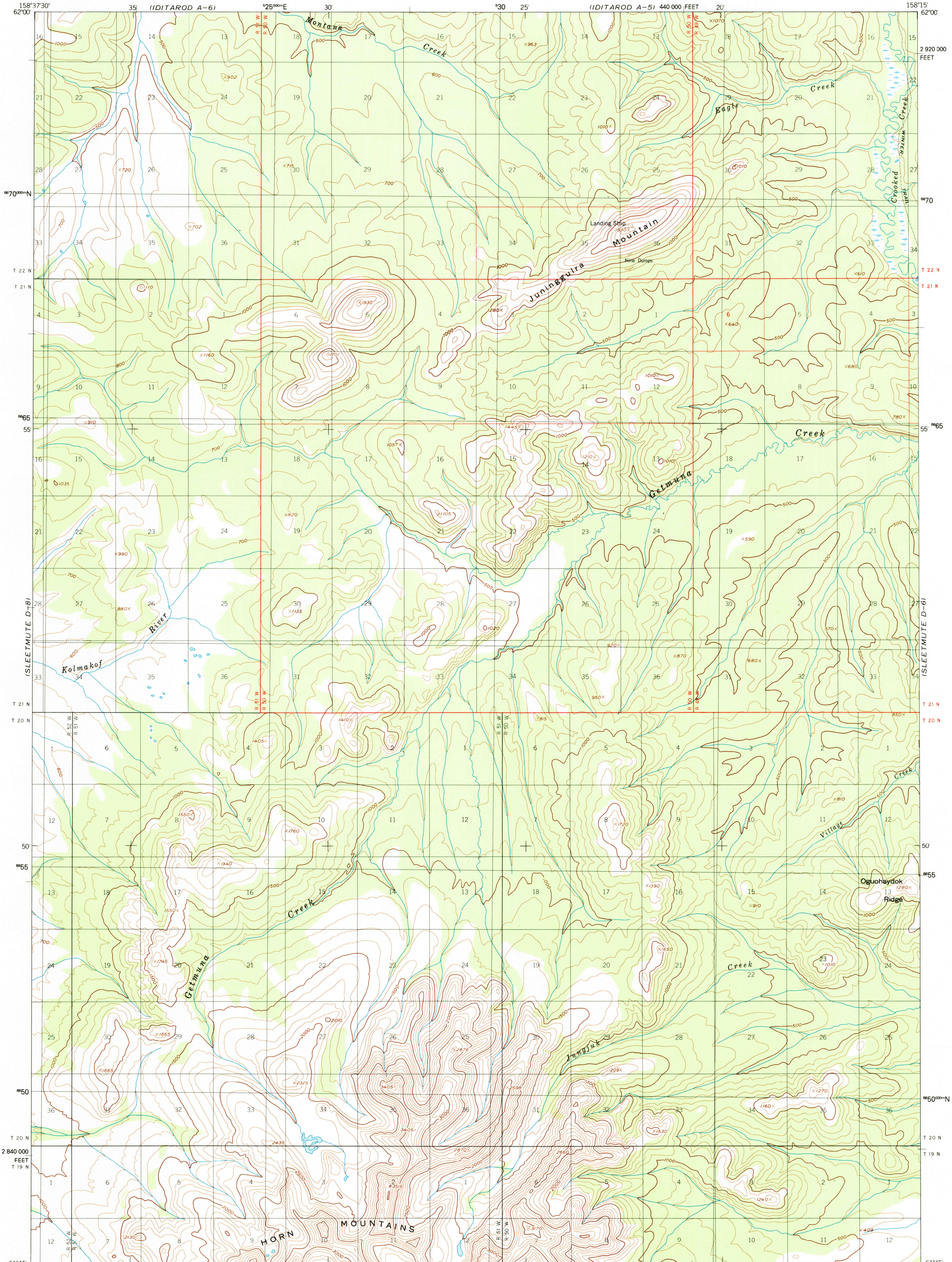
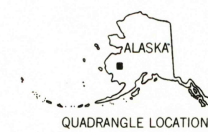
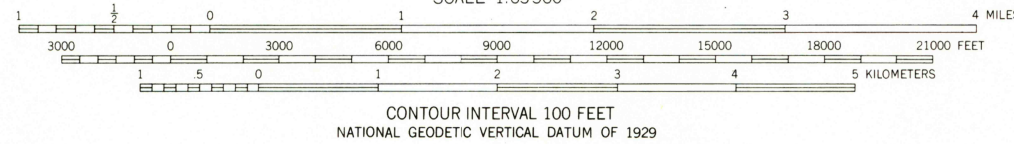
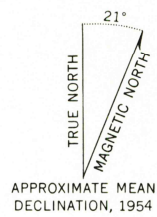


UNITED STATES
DEPARTMENT OF THE INTERIOR
GEOLOGICAL SURVEY

SLEETMUTE (D-7) QUADRANGLE
ALASKA
1:63 360 SERIES (TOPOGRAPHIC)



Mapped, edited, and published by the Geological Survey
Control by USCE
Topography by photogrammetric methods from aerial photographs
taken 1953, field annotated 1954. Map not field checked
Projection and 5000-meter grid
Universal Transverse Mercator, zone 4
20,000-foot grid ticks based on Alaska coordinate
system, zone 6. 1927 North American Datum
To place on the predicted North American Datum 1983 move
the projection lines 81 meters north and 127 meters east
Gray land lines represent unsurveyed and unmarked locations
predetermined by the Bureau of Land Management
Folio S-5, Seward Meridian
Swamps, as portrayed, indicate only the wetter areas,
usually of low relief, as interpreted from aerial photographs



SLEETMUTE (D-7), ALASKA
61158-G3-TF-063
1954
MINOR REVISION 1985

FOR SALE BY U.S. GEOLOGICAL SURVEY
FAIRBANKS, ALASKA 99701, DENVER, COLORADO 80225, OR RESTON, VIRGINIA 22092
A FOLDER DESCRIBING TOPOGRAPHIC MAPS AND SYMBOLS IS AVAILABLE ON REQUEST

SLEETMUTE D-7
ISBN # 08070372X AK 063
TF
9 780807 03724