

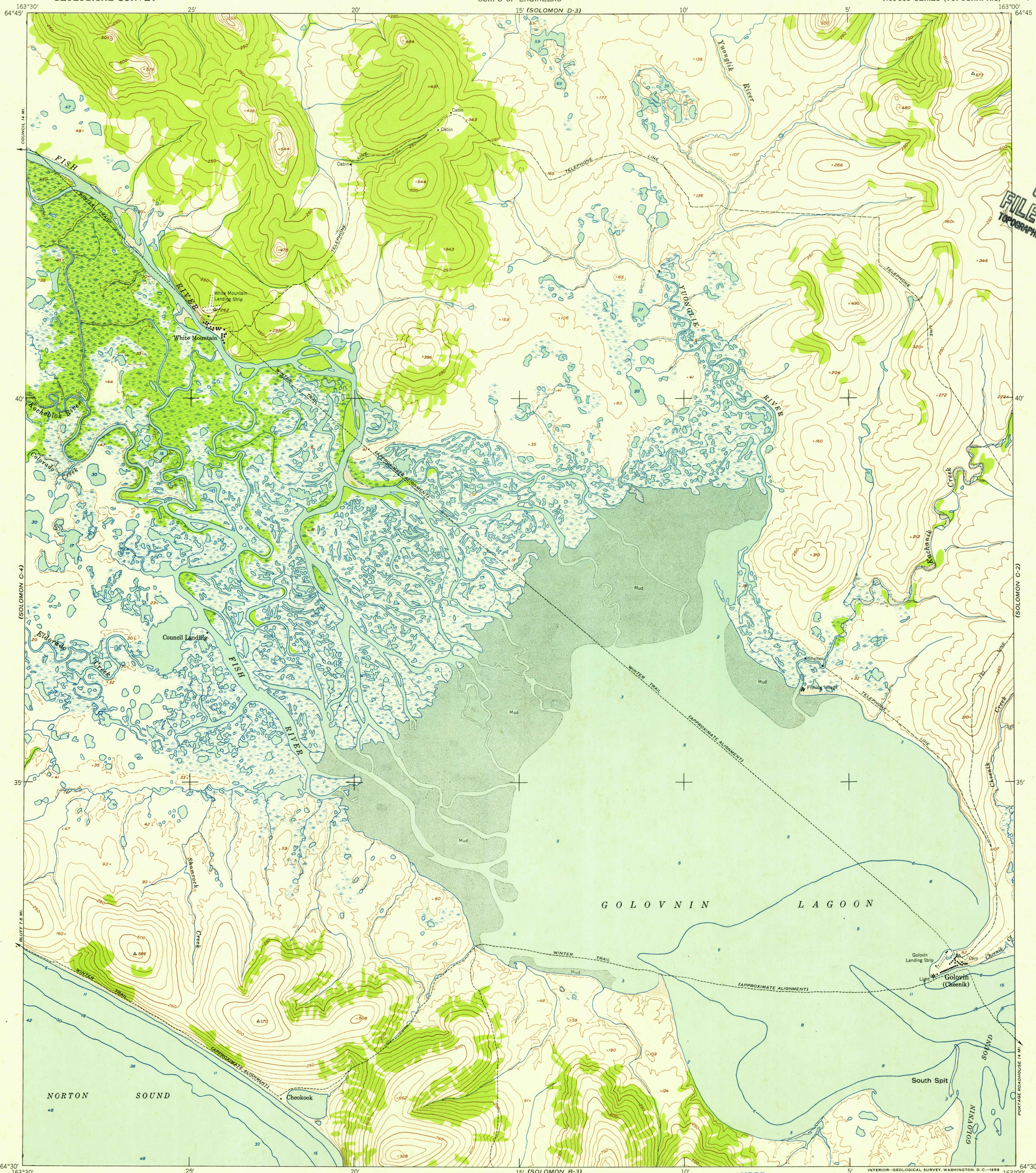
(SOLOMON D-4)

UNITED STATES
DEPARTMENT OF THE INTERIOR
GEOLOGICAL SURVEY

UNITED STATES
DEPARTMENT OF THE ARMY
CORPS OF ENGINEERS

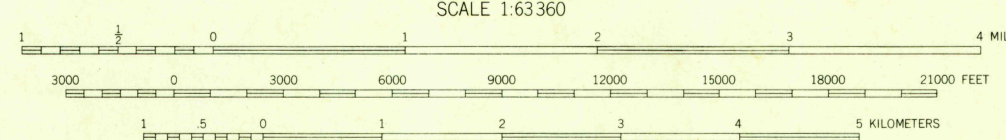
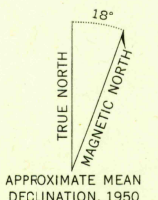
SOLOMON (C-3) QUADRANGLE
ALASKA—SECOND JUDICIAL DIVISION
1:63 360 SERIES (TOPOGRAPHIC)

(SOLOMON D-2)



U.S.G.S.
FILE COPY
TOPOGRAPHIC DIVISION

Map by the Army Map Service
Published for civil use by the Geological Survey
Control by USGS, USCG&S, and USCE
Topography from aerial photographs by photogrammetric methods
Aerial photographs taken 1949-1950. Map not field checked
Coastal hydrography by USCG&S
Universal Transverse Mercator projection, zone 3
1927 North American datum
Unchecked elevations are shown in brown



CONTOUR INTERVAL 50 FEET
DASHED LINES REPRESENT HALF-INTERVAL CONTOURS
DATUM IS MEAN SEA LEVEL
DEPTH CURVES AND SOUNDINGS IN FEET—DATUM IS MEAN LOWER LOW WATER
SHORELINE SHOWN REPRESENTS THE APPROXIMATE LINE OF MEAN HIGH WATER
THE AVERAGE RANGE OF TIDE IS APPROXIMATELY 2 FEET
FOR SALE BY U. S. GEOLOGICAL SURVEY
FAIRBANKS, ALASKA FEDERAL CENTER, DENVER, COLORADO WASHINGTON 25, D. C.
A FOLDER DESCRIBING TOPOGRAPHIC MAPS AND SYMBOLS IS AVAILABLE ON REQUEST

USGS
Historical File
Topographic Division

ROAD CLASSIFICATION

ALL WEATHER ROADS	DRY WEATHER ROADS
Hard-surface	Improved dirt
Other	Unimproved dirt
Trails	None



U.S.G.S.
FILE COPY
TOPOGRAPHIC DIVISION

SOLOMON (C-3), ALASKA
N6430-W16300/15x30
1950

MAY 22 1956

2125