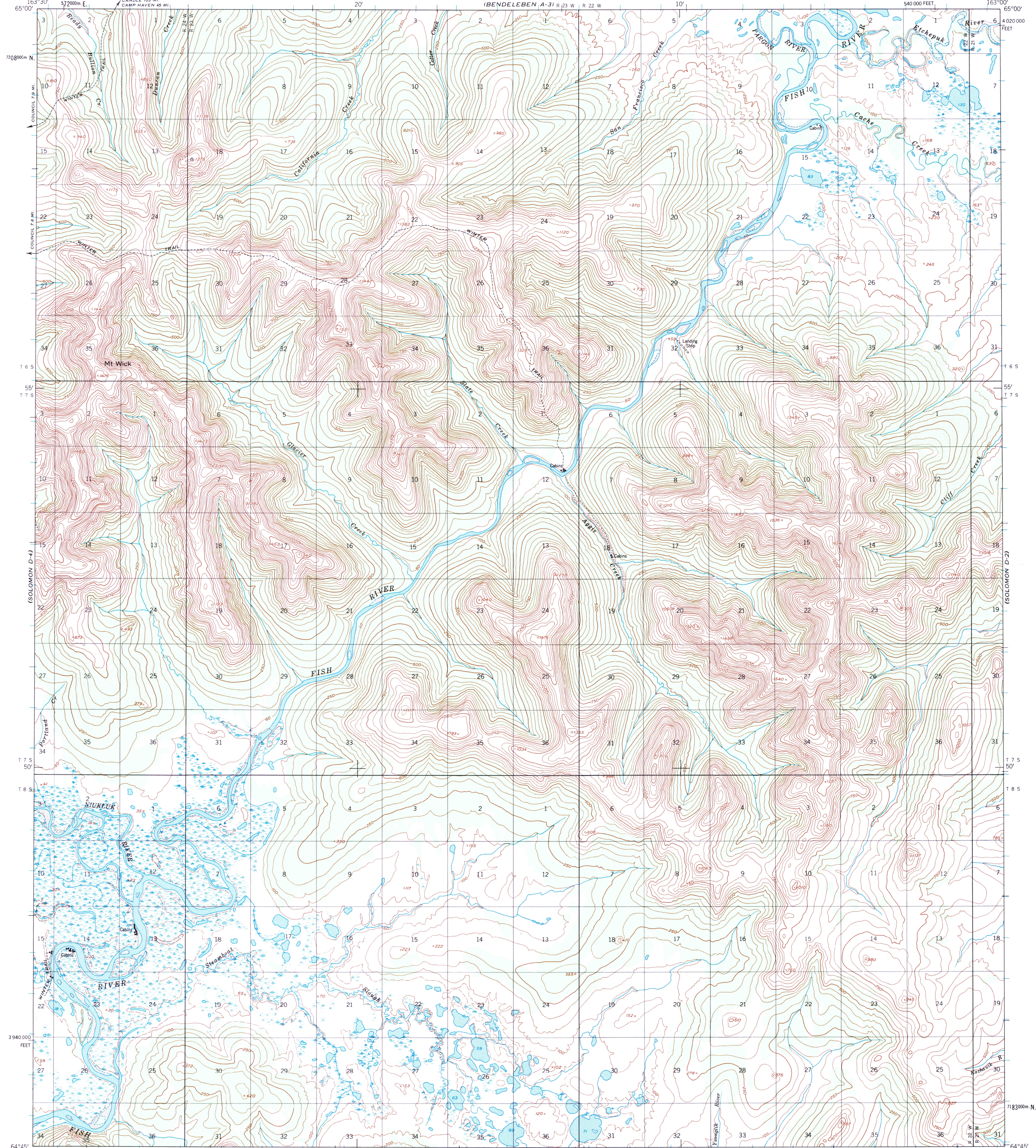


(BENDELEBEN A-1)

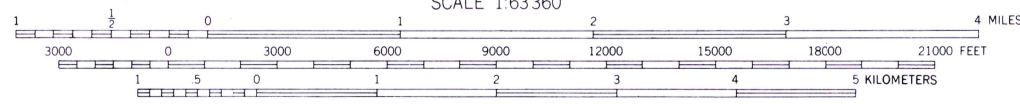
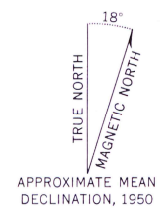
(BENDELEBEN A-2)

UNITED STATES
DEPARTMENT OF THE INTERIOR
GEOLOGICAL SURVEY

SOLOMON (D-3) QUADRANGLE
ALASKA
1:63 360 SERIES (TOPOGRAPHIC)



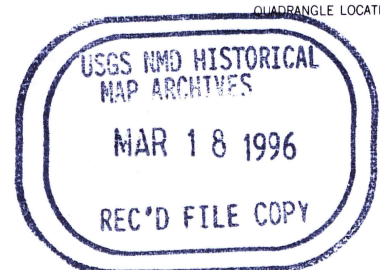
Mapped by the Defense Mapping Agency
Edited and published by the Geological Survey
Control by USGS, NOS/NOAA, and USCE
Topography by photogrammetric methods from aerial photographs taken 1949 and 1950. Map not field checked.
Projection and 1000-meter grid ticks shown in blue:
Universal Transverse Mercator, zone 3
10,000-foot grid ticks based on Alaska coordinate system, zone 7. 1927 North American Datum
To place on the predicted North American Datum 1983 move the projection lines 82 meters north and 129 meters east
Land lines represent unsurveyed and unmarked locations predetermined by the Bureau of Land Management Folio K-13, Katerl River Meridian
Swamps, as portrayed, indicate only the wetter areas, usually of low relief, as interpreted from aerial photographs



CONTOUR INTERVAL 50 FEET
DASHED LINES REPRESENT 25-FOOT CONTOURS
NATIONAL GEODETIC VERTICAL DATUM OF 1929

FOR SALE BY U.S. GEOLOGICAL SURVEY
FAIRBANKS, ALASKA 99701, DENVER, COLORADO 80225, OR RESTON, VIRGINIA 22092
A FOLDER DESCRIBING TOPOGRAPHIC MAPS AND SYMBOLS IS AVAILABLE ON REQUEST

ROAD CLASSIFICATION
Trails



SOLOMON (D-3), ALASKA
N6445-W16300/15X30
1950
MINOR REVISION 1984

(SOLOMON C-1)

(SOLOMON C-2)

