

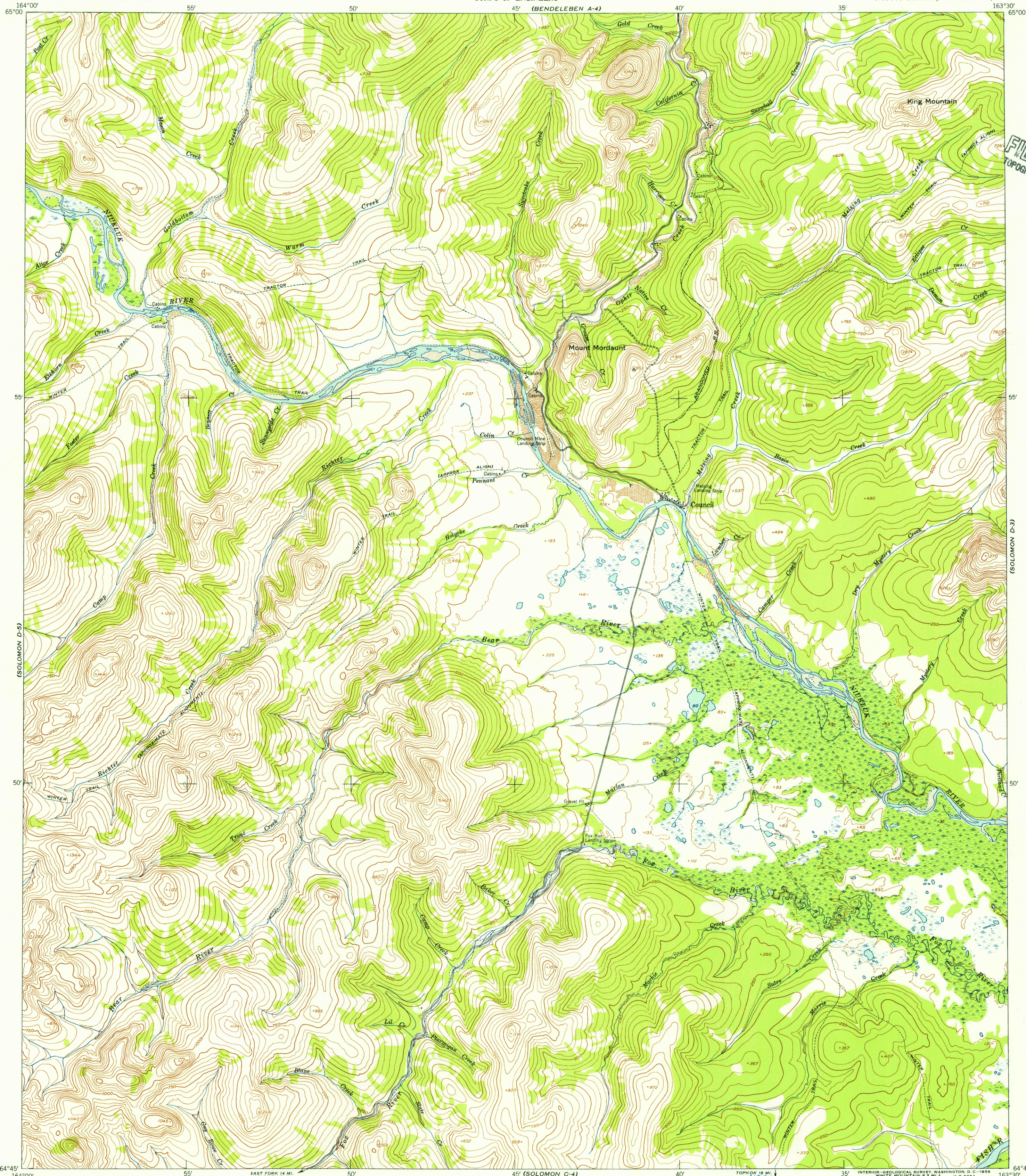
(BENDELEBEN A-5)

(BENDELEBEN A-3)

UNITED STATES  
DEPARTMENT OF THE INTERIOR  
GEOLOGICAL SURVEY

UNITED STATES  
DEPARTMENT OF THE ARMY  
CORPS OF ENGINEERS

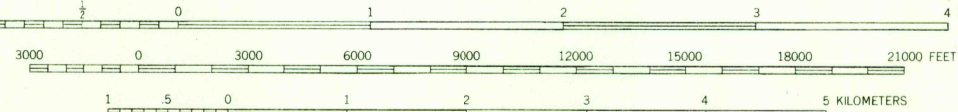
SOLOMON (D-4) QUADRANGLE  
ALASKA—SECOND JUDICIAL DIVISION  
1:63 360 SERIES (TOPOGRAPHIC)



Mapped by the Army Map Service  
Published for civil use by the Geological Survey  
Control by USGS, USC&GS, and USCE  
Topography from aerial photographs by photogrammetric methods  
Aerial photographs taken 1950. Map not field checked  
Universal Transverse Mercator projection, zone 3  
1927 North American datum  
Unchecked elevations are shown in brown

TRUE NORTH  
MAGNETIC NORTH  
APPROXIMATE MEAN  
DECLINATION, 1950

SCALE 1:63 360



CONTOUR INTERVAL 50 FEET  
DASHED LINES REPRESENT HALF-INTERVAL CONTOURS  
DATUM IS MEAN SEA LEVEL

FOR SALE BY U. S. GEOLOGICAL SURVEY  
FAIRBANKS, ALASKA FEDERAL CENTER, DENVER, COLORADO WASHINGTON 25, D. C.  
A FOLDER DESCRIBING TOPOGRAPHIC MAPS AND SYMBOLS IS AVAILABLE ON REQUEST

Historical File  
Topographic Division



ROAD CLASSIFICATION  
ALL WEATHER ROADS DRY WEATHER ROADS  
Hard-surface ..... None Improved dirt .....  
Other ..... None Unimproved dirt .....  
Trails .....  
U.S.G.S. SOLOMON (D-4), ALASKA  
N6445-W16330/15x30  
1950

U.S.G.S.  
FILE COPY  
TOPOGRAPHIC DIVISION

AUG 1 1956

2100