

(TELLER A-1)

UNITED STATES
DEPARTMENT OF THE INTERIOR
GEOLOGICAL SURVEY

UNITED STATES
DEPARTMENT OF THE ARMY
CORPS OF ENGINEERS

SOLOMON (D-6) QUADRANGLE
ALASKA—SECOND JUDICIAL DIVISION
1:63 360 SERIES (TOPOGRAPHIC)

(BENDELEBEN A-5)

U.S.G.S.
FILE COPY
TOPOGRAPHIC DIVISION

(SOLOMON D-5)

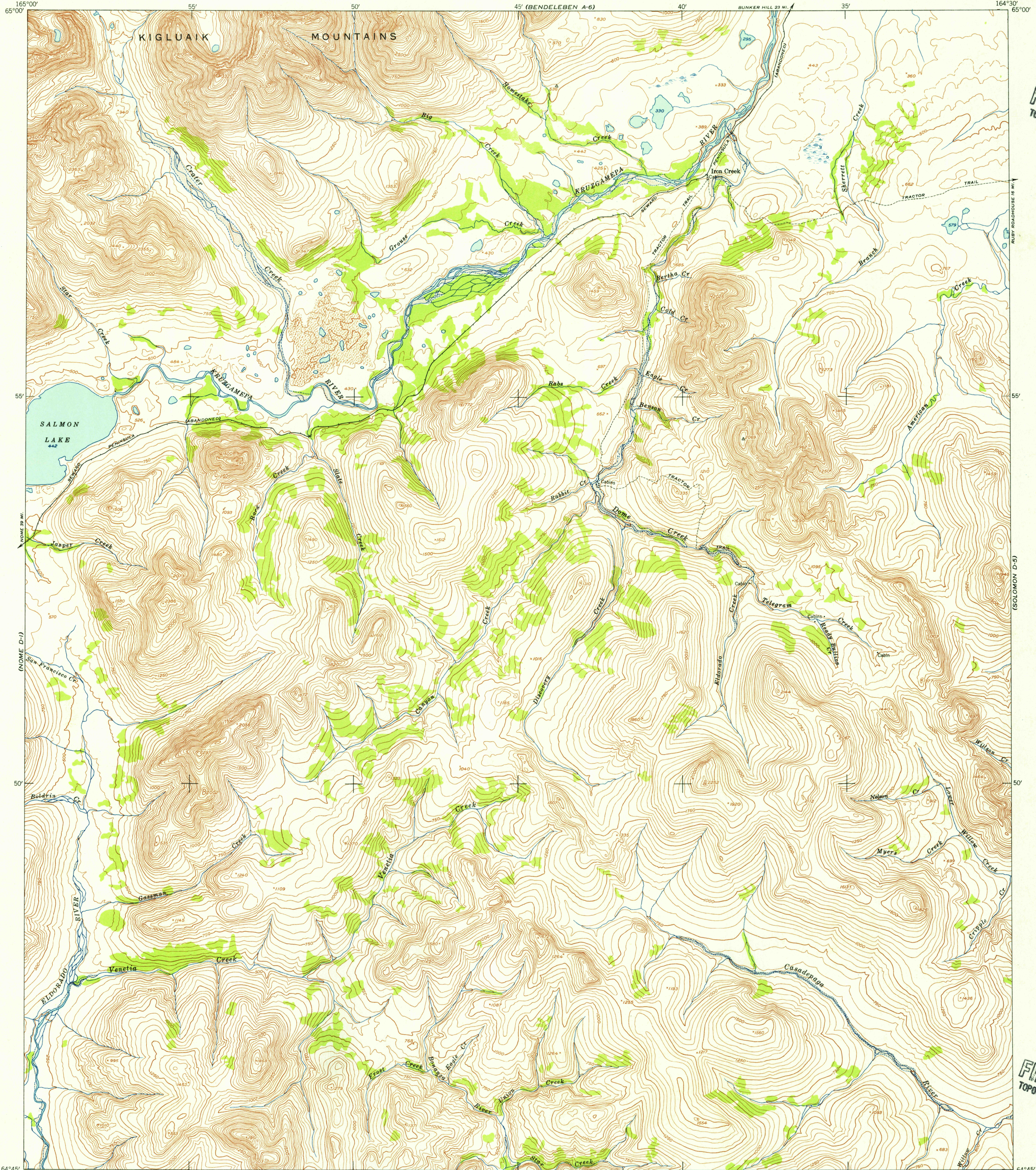
U.S.G.S.
FILE COPY
TOPOGRAPHIC DIVISION

U.S.G.S.
FILE COPY
TOPOGRAPHIC DIVISION

SOLOMON (D-6), ALASKA
N6445-W16430/15x30
1950

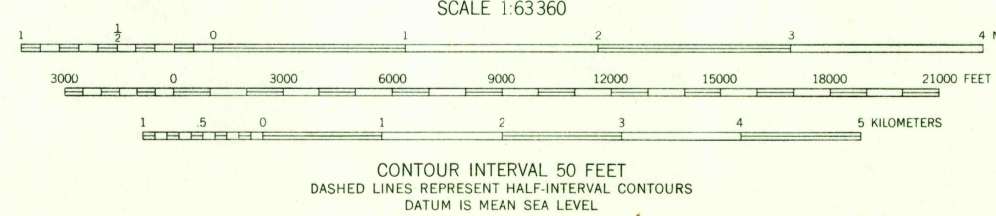
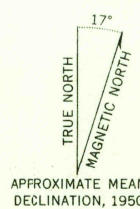
AUG 1 1956

2095



(NOME C-1)

Mapped by the Army Map Service
Published for civil use by the Geological Survey
Control by USGS, USC&GS, and USCE
Topography from aerial photographs by photogrammetric methods
Aerial photographs taken 1950. Map not field checked
Universal Transverse Mercator projection, zone 3
1927 North American datum
Unchecked elevations are shown in brown



USGS
Historical File
Topographic Division



ROAD CLASSIFICATION
ALL WEATHER ROADS DRY WEATHER ROADS
Hard-surface None Improved dirt None
Other None Unimproved dirt None
Trails None

FOR SALE BY U. S. GEOLOGICAL SURVEY
FAIRBANKS, ALASKA FEDERAL CENTER, DENVER, COLORADO WASHINGTON 25, D. C.
A FOLDER DESCRIBING TOPOGRAPHIC MAPS AND SYMBOLS IS AVAILABLE ON REQUEST